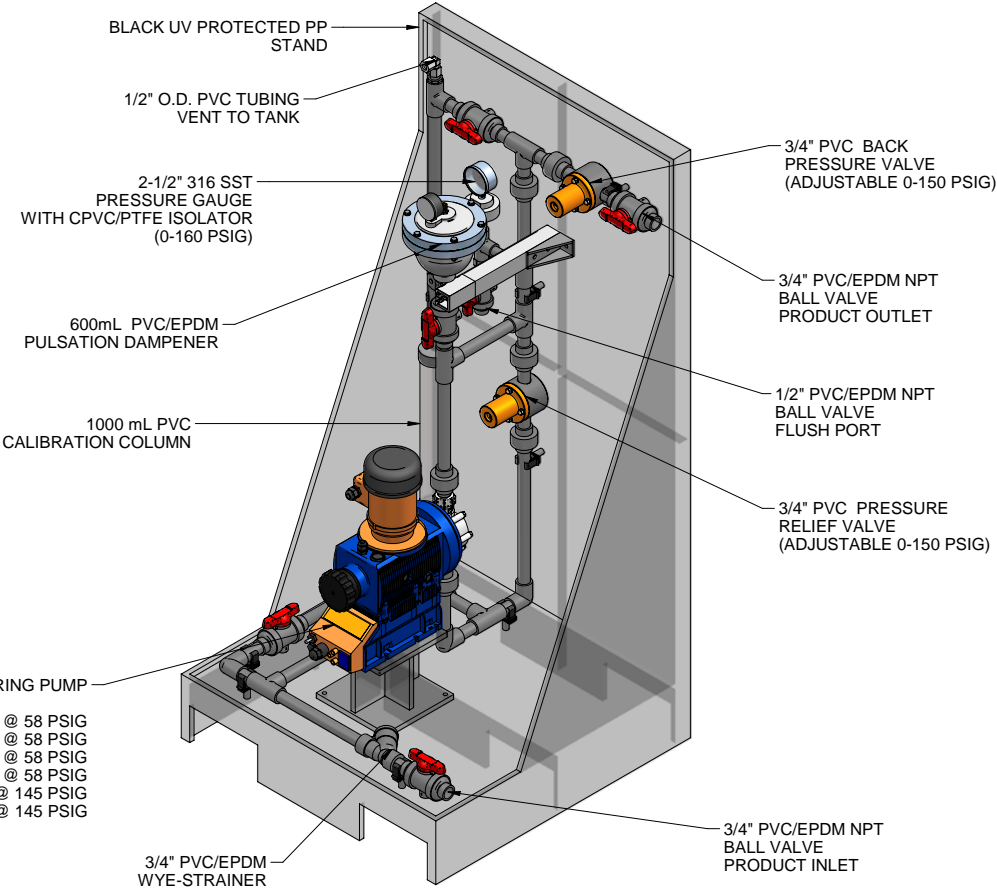
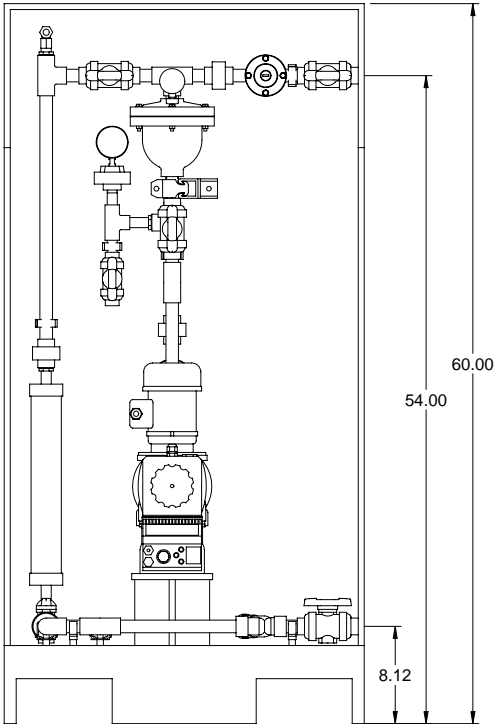


PLAN VIEW

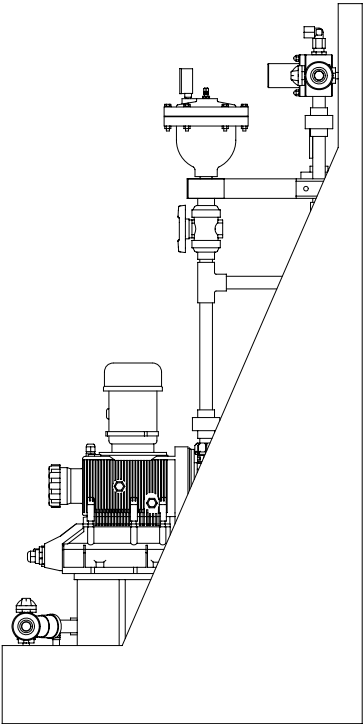


ISOMETRIC VIEW

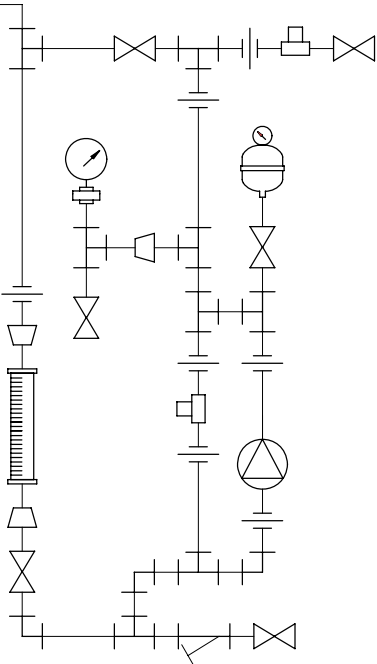
S1BAH04084 MAX. CAPACITY: 26.7 GPH @ 58 PSIG
S1CAH04084 MAX. CAPACITY: 26.7 GPH @ 58 PSIG
S1BAH04120 MAX. CAPACITY: 38.0 GPH @ 58 PSIG
S1CAH04120 MAX. CAPACITY: 31.7 GPH @ 58 PSIG
S2BAHM12090 MAX. CAPACITY: 28.5 GPH @ 145 PSIG
S2CAHM12090 MAX. CAPACITY: 28.5 GPH @ 145 PSIG



FRONT VIEW



SIDE VIEW



PIPING SCHEMATIC

NOTES:

- ALL PIPING AND FITTINGS SHALL BE 3/4" SCH. 80 PVC SOCKET WELD WITH EPDM SEALS UNLESS OTHERWISE REQUIRED BY COMPONENTS.
- ALL DIMENSIONS ARE IN INCHES AND ARE SHOWN FOR REFERENCE ONLY.

A	05/15/09	REVISED PER BASIC SKID		ALS	
0	03/24/08	FIRST ISSUE		GJS	
REV	DATE	DESCRIPTION		BY	APPD REV
REVISIONS					
CUSTOMER PROMINENT FLUID CONTROLS INC. (PRE-ENGINEERED SYSTEM)					
JOB No		7749318		PURCHASE ORDER No	
TITLE MS1B-B075_FLOOR_PVC\EPDM_PD GENERAL ARRANGEMENT					
THIS DRAWING IS THE PROPERTY OF PROMINENT FLUID CONTROLS INC. AND SHALL NOT BE COPIED OR TRANSFERRED WITHOUT THE WRITTEN CONSENT OF PROMINENT FLUID CONTROLS INC.					
ENGINEERS SEAL		<div><div><div><div>ptc</div><div>ProMinent</div></div><div><div>ProMinent®</div><div>THE PROMINENT GROUP OF COMPANIES</div></div></div></div>			
		PITTSBURGH, PA USA		WWW.PROMINENT.US	
		PROMINENT FLUID CONTROLS LTD. 490 SOUTHGATE DRIVE. GUELPH, ONTARIO, CANADA N1H 6J3 TEL. 519 836 5692 FAX. 519 836 5226		PROMINENT FLUID CONTROLS INC. RIDC PARK WEST 136 INDUSTRY DRIVE, PITTSBURGH P.A., USA. 15275 TEL. 412 787 2484 FAX. 412 787 0704	
		DESIGNED GJS		APPROVED	
		DRAWN GJS		SCALE N.T.S.	
		CHECKED DTH		DATE 03/24/08	
DWG No				REV	PAGE
7749318-200				A	1/1