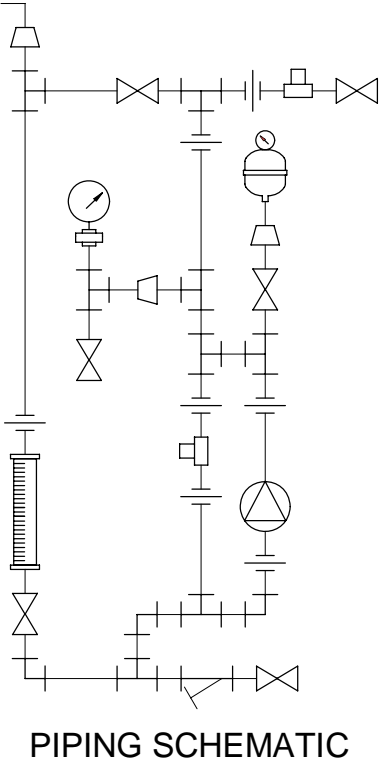
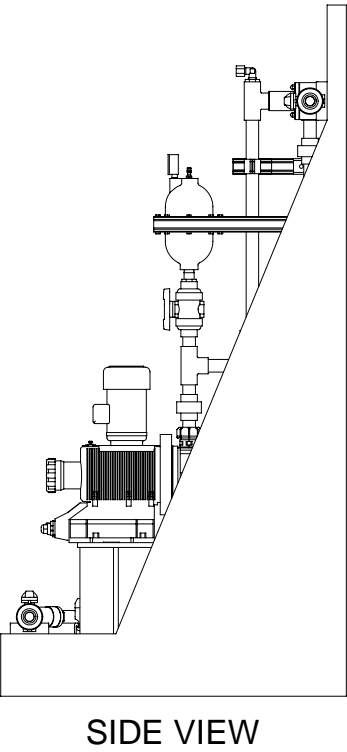
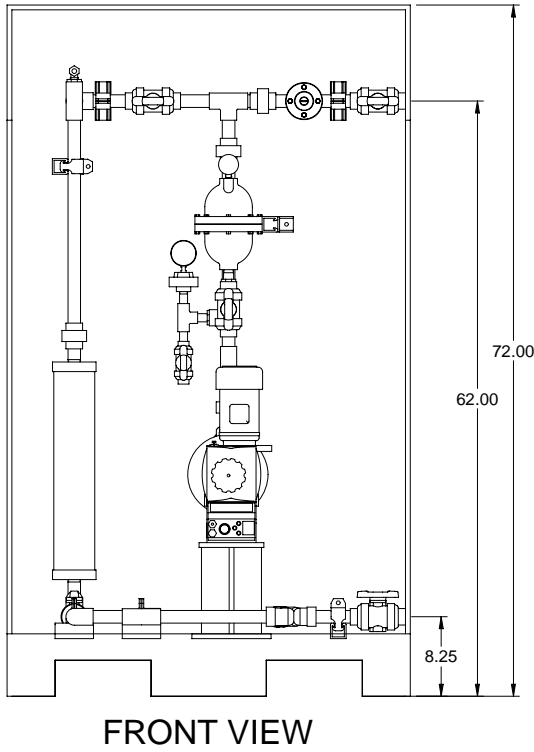


S2BAHM04350 MAX. CAPACITY: 111.0 GPH @ 58 PSIG  
S2CAHM04350 MAX. CAPACITY: 92.5 GPH @ 58 PSIG  
S3BAH120270 MAX. CAPACITY: 85.6 GPH @ 145 PSIG  
S3CAH120270 MAX. CAPACITY: 85.6 GPH @ 145 PSIG



- NOTES:
- ALL PIPING AND FITTINGS SHALL BE 1" SCH. 80 PVC SOCKET WELD WITH EPDM SEALS UNLESS OTHERWISE REQUIRED BY COMPONENTS.
  - ALL DIMENSIONS ARE IN INCHES AND ARE SHOWN FOR REFERENCE ONLY.

A	09/02/09	REVISED PER UP-DATED PARTS		ALS	
0	03/24/08	FIRST ISSUE		GJS	
REV	DATE	DESCRIPTION		BY	APPD/REV
REVISIONS					
CUSTOMER <b>PROMINENT FLUID CONTROLS INC. (PRE-ENGINEERED SYSTEM)</b>					
JOB No		7749330	PURCHASE ORDER No		
TITLE <b>MS1C-B100_FLOOR_PVC\EPDM_PD GENERAL ARRANGEMENT</b>					
THIS DRAWING IS THE PROPERTY OF PROMINENT FLUID CONTROLS INC. AND SHALL NOT BE COPIED OR TRANSFERRED WITHOUT THE WRITTEN CONSENT OF PROMINENT FLUID CONTROLS INC.					
ENGINEERS SEAL		<div><div><div><div>ptc</div><div>ProMinent</div></div><div><div>ProMinent®</div><div>THE PROMINENT GROUP OF COMPANIES</div></div></div></div>			
		<div><div>PITTSBURGH, PA USA</div><div>WWW.PROMINENT.US</div></div>			
		<div><div>PROMINENT FLUID CONTROLS LTD. 490 SOUTHGATE DRIVE. GUELPH, ONTARIO, CANADA N1H 6J3 TEL. 519 836 5692      FAX. 519 836 5226</div><div>PROMINENT FLUID CONTROLS INC. RIDC PARK WEST 136 INDUSTRY DRIVE, PITTSBURGH P.A., USA. 15275 TEL. 412 787 2484      FAX. 412 787 0704</div></div>			
		<div><div>DESIGNED      GJS</div><div>APPROVED</div></div>			
		<div><div>DRAWN      GJS</div><div>SCALE      N.T.S.</div></div>			
		<div><div>CHECKED      DTH</div><div>DATE      03/24/08</div></div>			
DWG No				REV A	PAGE 1/1
7749330-200					