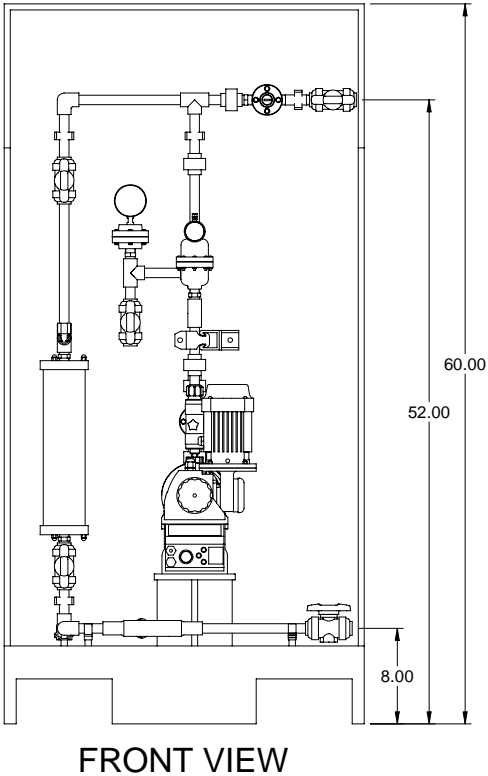
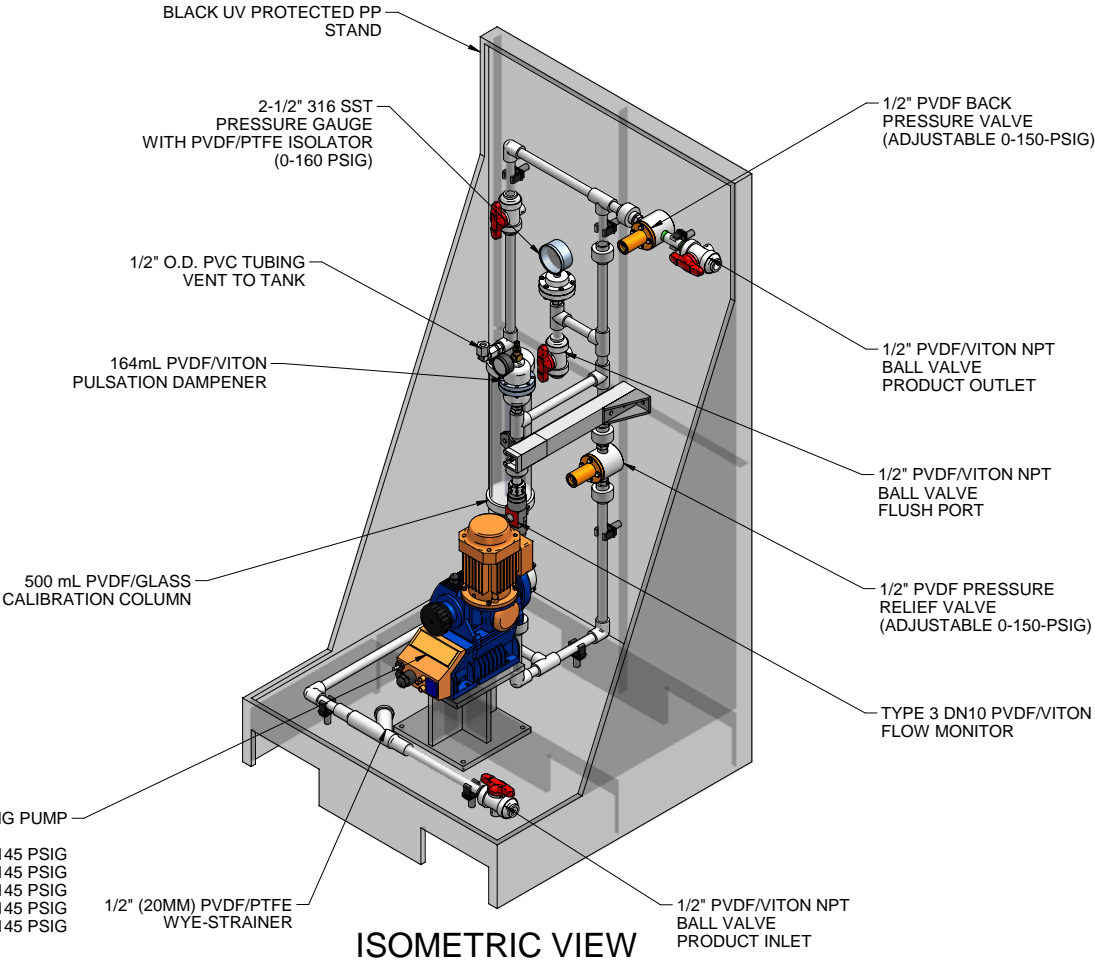


PLAN VIEW

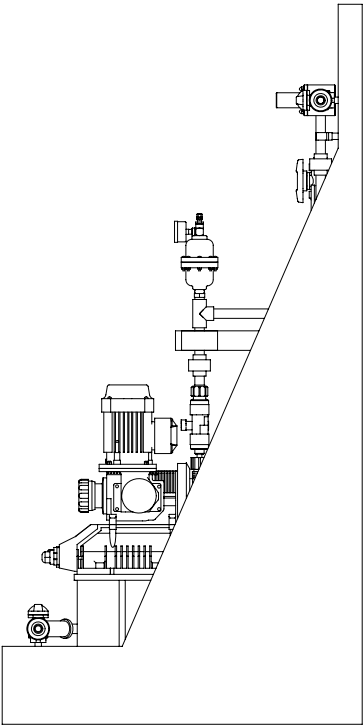


FRONT VIEW

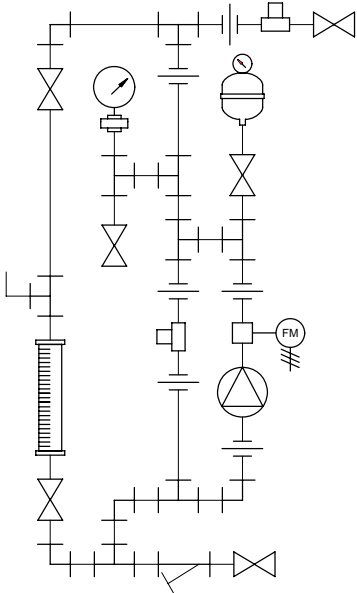
SIGMA SERIES METERING PUMP  
S1CAH10022 MAX. CAPACITY: 6.8 GPH @ 145 PSIG  
S1CAH10044 MAX. CAPACITY: 14.0 GPH @ 145 PSIG  
S1CAH10050 MAX. CAPACITY: 13.2 GPH @ 145 PSIG  
S1CAH12017 MAX. CAPACITY: 5.3 GPH @ 145 PSIG  
S1CAH12035 MAX. CAPACITY: 11.1 GPH @ 145 PSIG



ISOMETRIC VIEW



SIDE VIEW



PIPING SCHEMATIC

- NOTES:
- ALL PIPING AND FITTINGS SHALL BE 1/2"(20MM) SR232 PVDF FUSION WELD WITH VITON SEALS UNLESS OTHERWISE REQUIRED BY COMPONENTS.
  - ALL DIMENSIONS ARE IN INCHES AND ARE SHOWN FOR REFERENCE ONLY.

A	09/17/09	REVISED PER UP-DATED PARTS		ALS	
0	01/28/08	FIRST ISSUE		GJS	
REV	DATE	DESCRIPTION		BY	APPD/REV
REVISIONS					
CUSTOMER <b>PROMINENT FLUID CONTROLS INC. (PRE-ENGINEERED SYSTEM)</b>					
JOB No		7749363		PURCHASE ORDER No	
TITLE <b>MS1A-A050_FLOOR_PVDFVITON_PD_FM GENERAL ARRANGEMENT</b>					
THIS DRAWING IS THE PROPERTY OF PROMINENT FLUID CONTROLS INC. AND SHALL NOT BE COPIED OR TRANSFERRED WITHOUT THE WRITTEN CONSENT OF PROMINENT FLUID CONTROLS INC.					
ENGINEERS SEAL		<div><div><div><div>ptc</div><div>ProMinent</div></div><div><div>ProMinent®</div><div>THE PROMINENT GROUP OF COMPANIES</div></div></div></div>			
		<div><div>PITTSBURGH, PA USA</div><div>WWW.PROMINENT.US</div><div><div>PROMINENT FLUID CONTROLS LTD. 490 SOUTHGATE DRIVE. GUELPH, ONTARIO, CANADA N1H 6J3 TEL. 519 836 5692      FAX. 519 836 5226</div><div>PROMINENT FLUID CONTROLS INC. RIDC PARK WEST 136 INDUSTRY DRIVE, PITTSBURGH P.A., USA. 15275 TEL. 412 787 2484      FAX. 412 787 0704</div></div><div><div>DESIGNED      GJS</div><div>DRAWN      GJS</div><div>CHECKED      DTH</div></div><div><div>APPROVED</div><div>SCALE      N.T.S.</div><div>DATE      01/28/08</div></div></div>			
DWG No				REV	PAGE
7749363-200				A	1/1