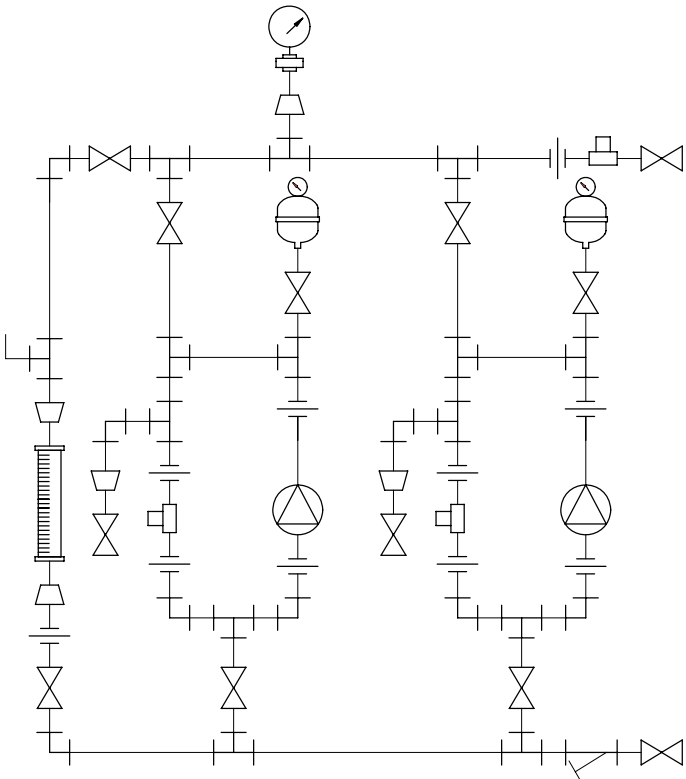
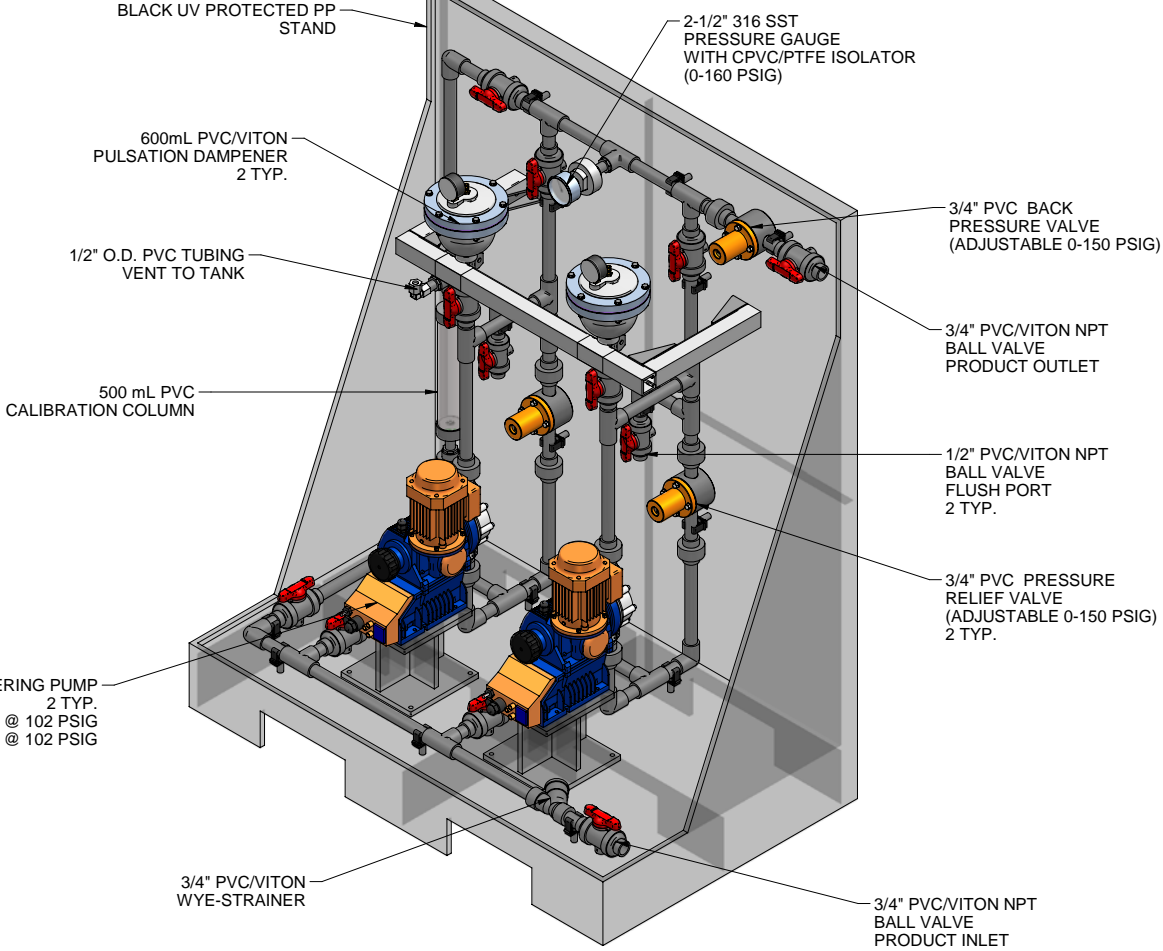
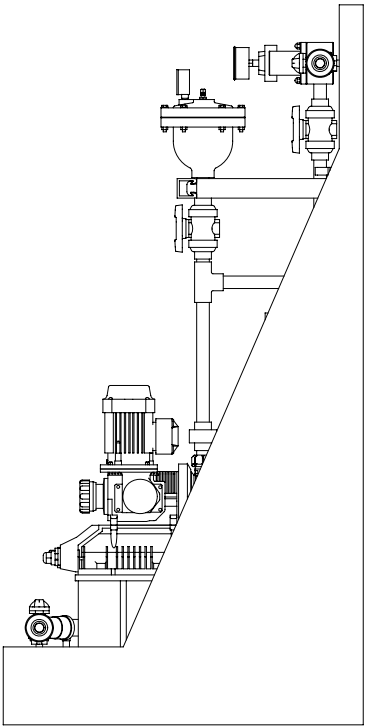
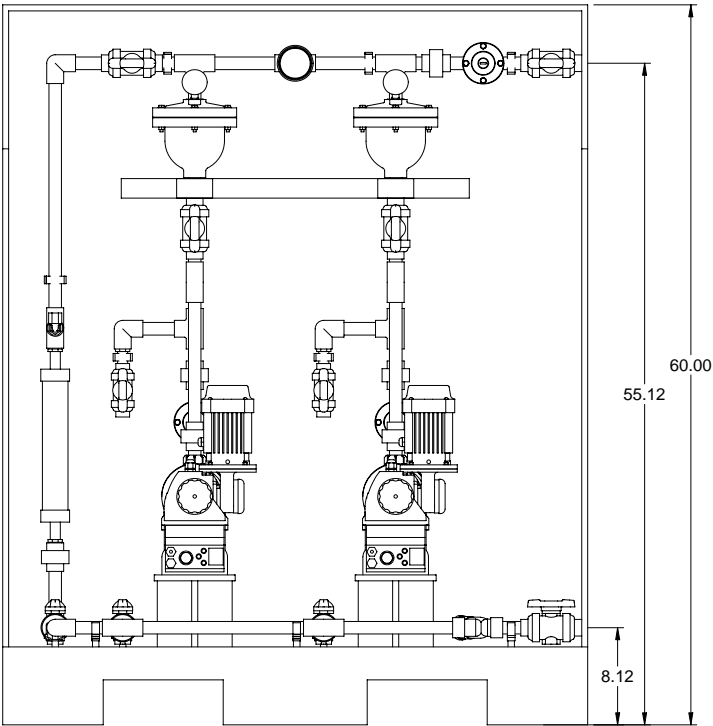


SIGMA SERIES METERING PUMP  
2 TYP.  
S1BAH07042 MAX. CAPACITY: 13.2 GPH @ 102 PSIG  
S1CAH07042 MAX. CAPACITY: 13.2 GPH @ 102 PSIG




PIPING SCHEMATIC

- NOTES:
- ALL PIPING AND FITTINGS SHALL BE 3/4" SCH. 80 PVC SOCKET WELD WITH VITON SEALS UNLESS OTHERWISE REQUIRED BY COMPONENTS.
  - ALL DIMENSIONS ARE IN INCHES AND ARE SHOWN FOR REFERENCE ONLY.



SIDE VIEW

MAXIMUM TESTING PRESSURE =	150 PSI
MAXIMUM OPERATING PRESSURE =	102 PSI
CHEMICAL SERVICE =	

A	05/21/09	REVISED PER BASIC SKID		ALS					
0	01/18/08	FIRST ISSUE		GJS					
REV	DATE	DESCRIPTION		BY	APPD/REV'D				
REVISIONS									
CUSTOMER <b>PROMINENT FLUID CONTROLS INC. (PRE-ENGINEERED SYSTEM)</b>									
JOB No		7749378		PURCHASE ORDER No					
TITLE <b>MS2B-A075_FLOOR_PVC\VITON_PD GENERAL ARRANGEMENT</b>									
THIS DRAWING IS THE PROPERTY OF PROMINENT FLUID CONTROLS INC. AND SHALL NOT BE COPIED OR TRANSFERRED WITHOUT THE WRITTEN CONSENT OF PROMINENT FLUID CONTROLS INC.									
ENGINEERS SEAL		<div><div></div><div><div>Pro<b>Minent</b><sup>®</sup></div><div>THE PROMINENT GROUP OF COMPANIES</div></div></div>							
						PITTSBURGH, PA USA		WWW.PROMINENT.US	
						PROMINENT FLUID CONTROLS LTD. 490 SOUTHGATE DRIVE. GUELPH, ONTARIO, CANADA N1H 6J3 TEL. 519 836 5692      FAX. 519 836 5226		PROMINENT FLUID CONTROLS INC. RIDC PARK WEST 136 INDUSTRY DRIVE, PITTSBURGH P.A., USA. 15275 TEL. 412 787 2484      FAX. 412 787 0704	
						DESIGNED <b>GJS</b>		APPROVED	
						DRAWN <b>GJS</b>		SCALE <b>N.T.S.</b>	
						CHECKED <b>DTH</b>		DATE <b>01/18/08</b>	
DWG No			REV		PAGE				
7749378-200			A		1/1				