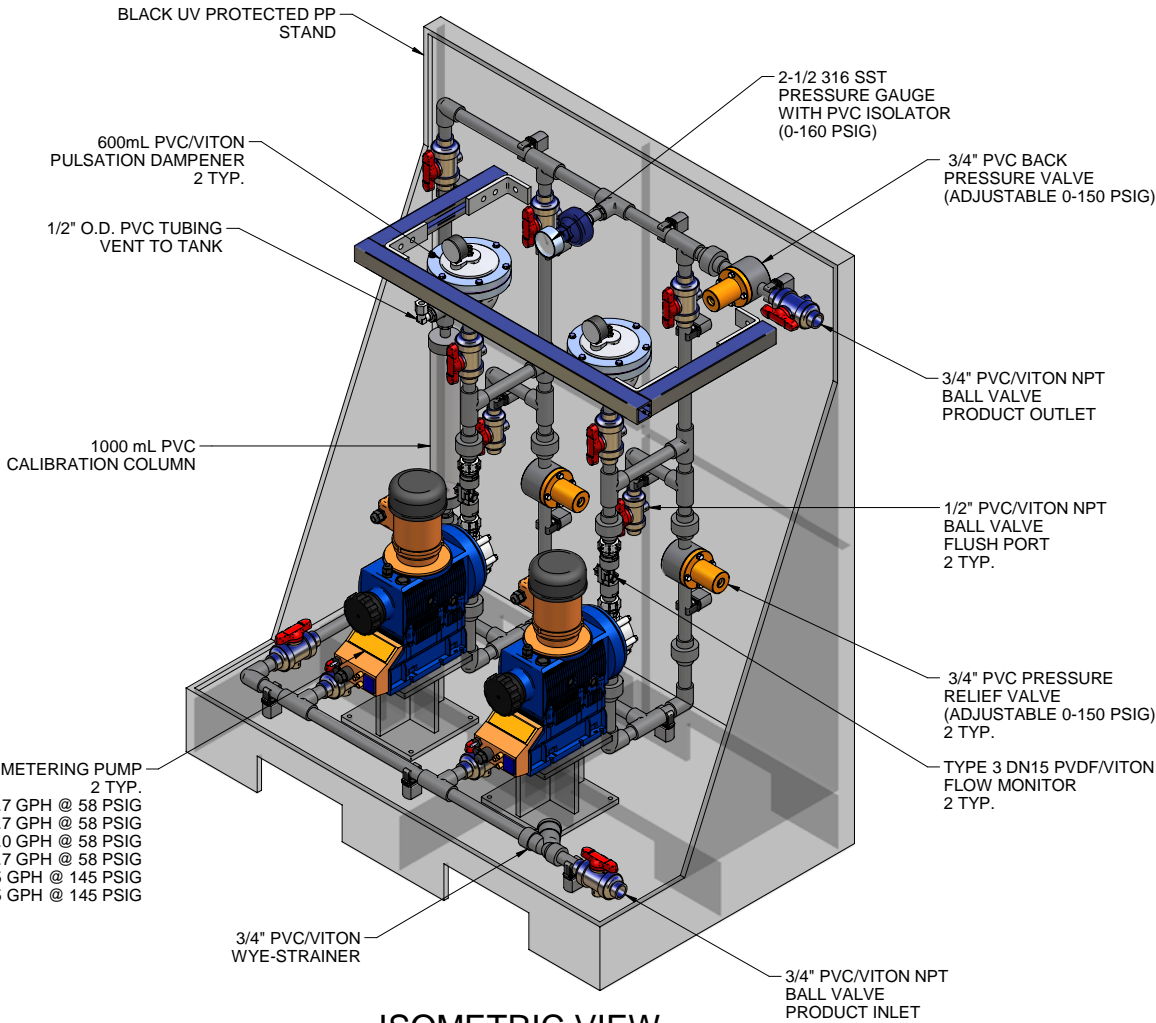
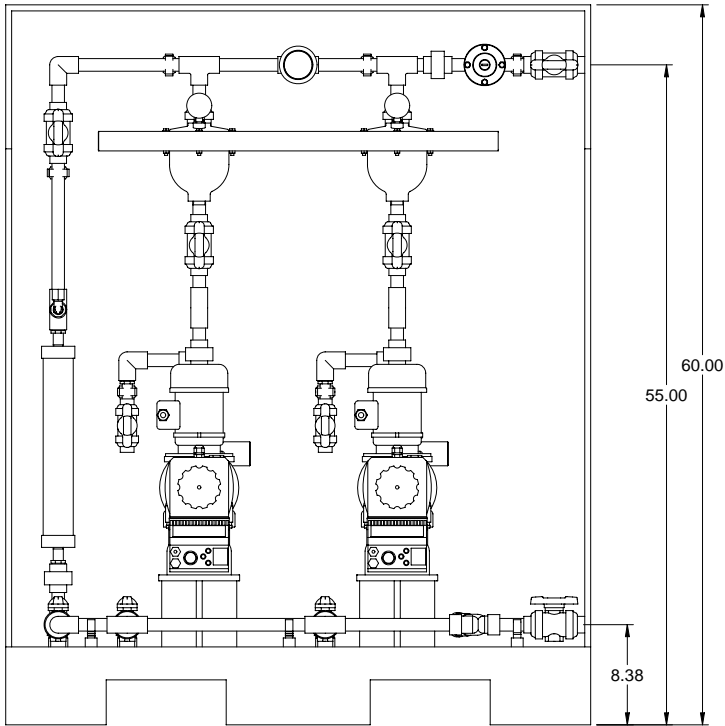


PLAN VIEW

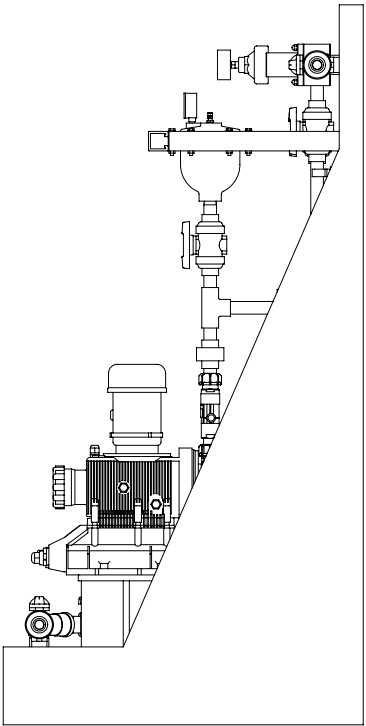
SIGMA SERIES METERING PUMP
2 TYP.
S1BAH04084 MAX. CAPACITY: 26.7 GPH @ 58 PSIG
S1CAH04084 MAX. CAPACITY: 26.7 GPH @ 58 PSIG
S1BAH04120 MAX. CAPACITY: 38.0 GPH @ 58 PSIG
S1CAH04120 MAX. CAPACITY: 31.7 GPH @ 58 PSIG
S2BAHM12090 MAX. CAPACITY: 28.5 GPH @ 145 PSIG
S2CAHM12090 MAX. CAPACITY: 28.5 GPH @ 145 PSIG



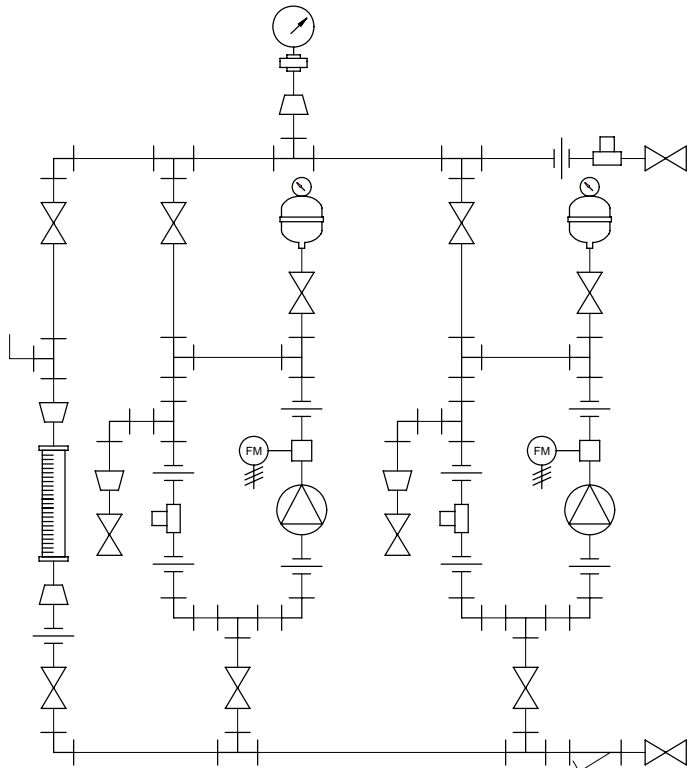
ISOMETRIC VIEW



FRONT VIEW



SIDE VIEW



PIPING SCHEMATIC

- NOTES:
- ALL PIPING AND FITTINGS SHALL BE 3/4" SCH. 80 PVC SOCKET WELD WITH VITON SEALS UNLESS OTHERWISE REQUIRED BY COMPONENTS.
 - ALL DIMENSIONS ARE IN INCHES AND ARE SHOWN FOR REFERENCE ONLY.

0	01/18/08	FIRST ISSUE		GJS	
REV	DATE	DESCRIPTION		BY	APPD/REV/D
REVISIONS					
CUSTOMER PROMINENT FLUID CONTROLS INC. (PRE-ENGINEERED SYSTEM)					
JOB No		7749379		PURCHASE ORDER No	
TITLE MS2B-B075_FLOOR_PVC\VITON_PD_FM GENERAL ARRANGEMENT					
THIS DRAWING IS THE PROPERTY OF PROMINENT FLUID CONTROLS INC. AND SHALL NOT BE COPIED OR TRANSFERRED WITHOUT THE WRITTEN CONSENT OF PROMINENT FLUID CONTROLS INC.					
ENGINEERS SEAL		<div><div><div><div>ptc</div><div>ProMinent</div></div><div><div>ProMinent®</div><div>THE PROMINENT GROUP OF COMPANIES</div></div></div></div>			
		<div><div><div>PITTSBURGH, PA USA</div><div>WWW.PROMINENT.US</div><div><div><div>PROMINENT FLUID CONTROLS LTD. 490 SOUTHGATE DRIVE. GUELPH, ONTARIO, CANADA N1H 6J3 TEL. 519 836 5692 FAX. 519 836 5226</div><div><div>PROMINENT FLUID CONTROLS INC. RIDC PARK WEST 136 INDUSTRY DRIVE, PITTSBURGH P.A., USA. 15275 TEL. 412 787 2484 FAX. 412 787 0704</div></div></div><div><div><div>DESIGNED</div><div>DRAWN</div><div>CHECKED</div></div><div><div>GJS</div><div>GJS</div><div>DTH</div></div><div><div>APPROVED</div><div>SCALE</div><div>DATE</div></div><div><div></div><div></div><div>01/18/08</div></div></div></div></div></div>			
DWG No			REV	PAGE	
7749379-200			0	1/1	