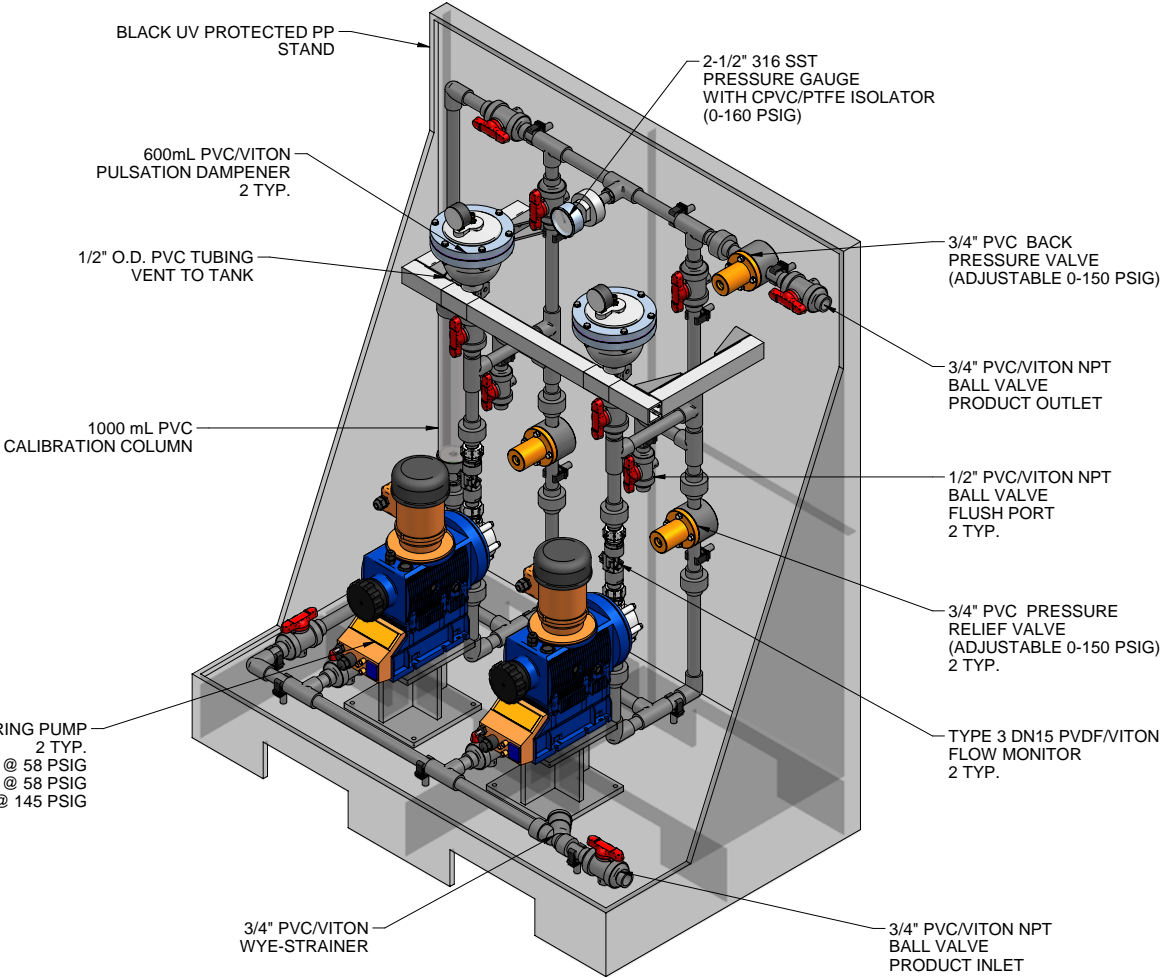
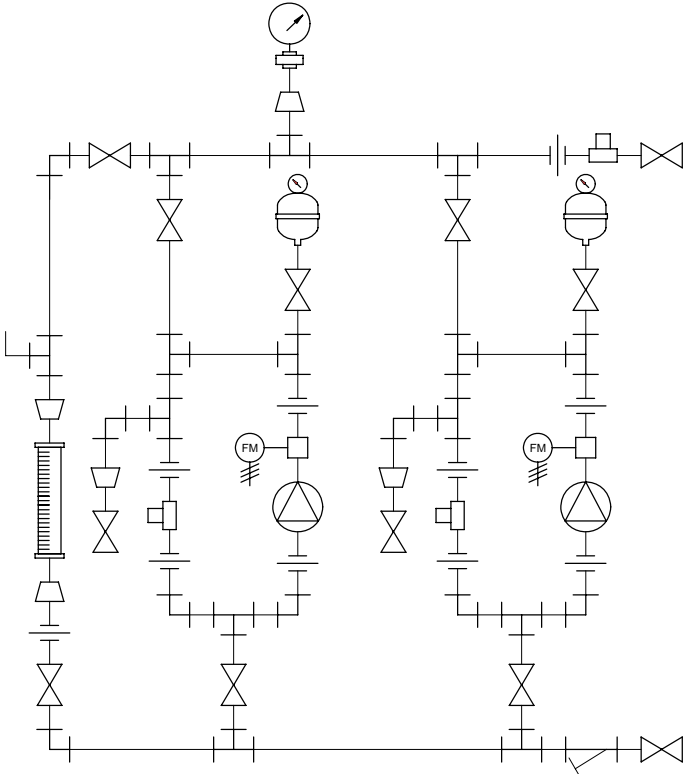
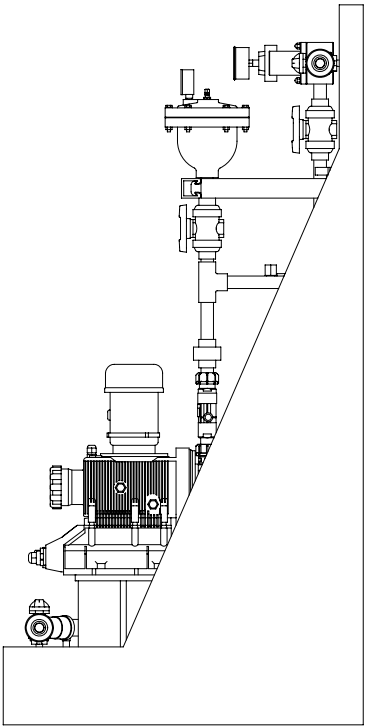
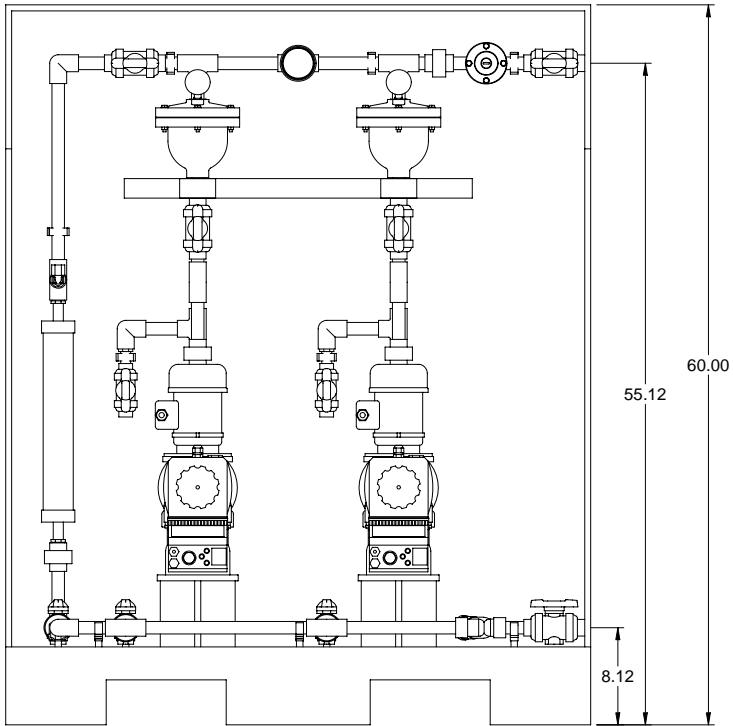



SIGMA SERIES METERING PUMP
2 TYP.
S1CAH04084 MAX. CAPACITY: 26.7 GPH @ 58 PSIG
S1CAH04120 MAX. CAPACITY: 31.7 GPH @ 58 PSIG
S2CAHM12090 MAX. CAPACITY: 28.5 GPH @ 145 PSIG



ISOMETRIC VIEW



- NOTES:
- ALL PIPING AND FITTINGS SHALL BE 3/4" SCH. 80 PVC SOCKET WELD WITH VITON SEALS UNLESS OTHERWISE REQUIRED BY COMPONENTS.
 - ALL DIMENSIONS ARE IN INCHES AND ARE SHOWN FOR REFERENCE ONLY.

A	05/21/09	REVISED PER BASIC SKID		ALS	
0	01/18/08	FIRST ISSUE		GJS	
REV	DATE	DESCRIPTION		BY	APPD/REV
REVISIONS					
CUSTOMER PROMINENT FLUID CONTROLS INC. (PRE-ENGINEERED SYSTEM)					
JOB No		7749379		PURCHASE ORDER No	
TITLE MS2B-B075_FLOOR_PVC\VITON_PD_FM GENERAL ARRANGEMENT					
THIS DRAWING IS THE PROPERTY OF PROMINENT FLUID CONTROLS INC. AND SHALL NOT BE COPIED OR TRANSFERRED WITHOUT THE WRITTEN CONSENT OF PROMINENT FLUID CONTROLS INC.					
ENGINEERS SEAL		<div><div></div><div><div>ProMinent®</div><div>THE PROMINENT GROUP OF COMPANIES</div></div></div> <div><div>PITTSBURGH, PA USA</div><div>WWW.PROMINENT.US</div><div><div>PROMINENT FLUID CONTROLS LTD. 490 SOUTHGATE DRIVE. GUELPH, ONTARIO, CANADA N1H 6J3 TEL. 519 836 5692 FAX. 519 836 5226</div><div>PROMINENT FLUID CONTROLS INC. RIDC PARK WEST 136 INDUSTRY DRIVE, PITTSBURGH P.A., USA. 15275 TEL. 412 787 2484 FAX. 412 787 0704</div></div><div><div>DESIGNED GJS</div><div>DRAWN GJS</div><div>CHECKED DTH</div></div><div><div>APPROVED</div><div>SCALE N.T.S.</div><div>DATE 01/18/08</div></div></div>			
DWG No		REV		PAGE	
7749379-200		A		1/1	