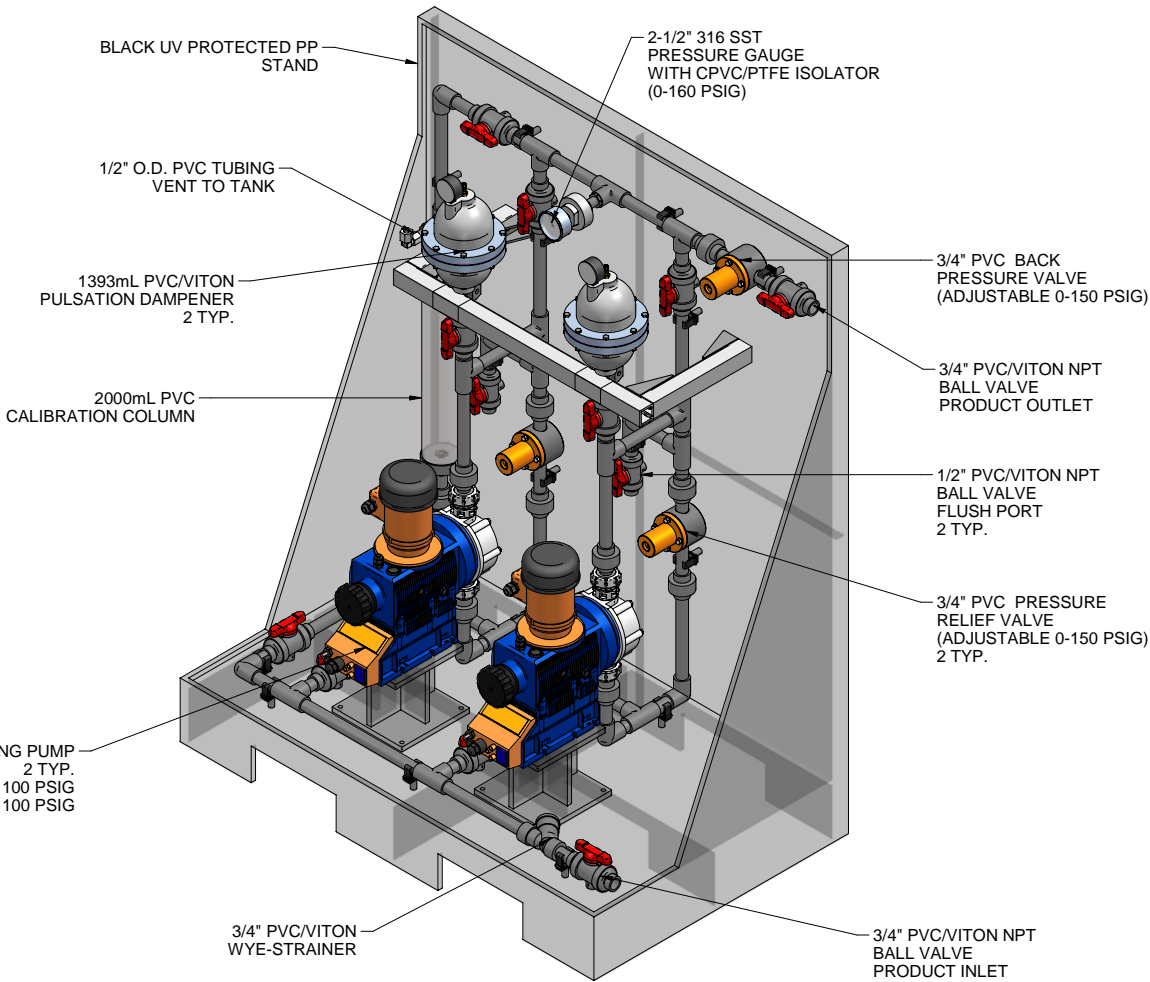
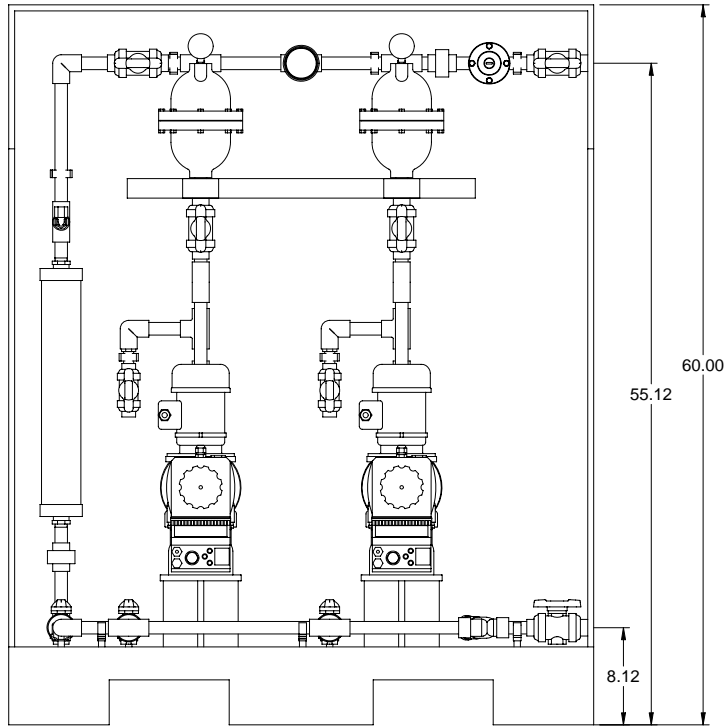


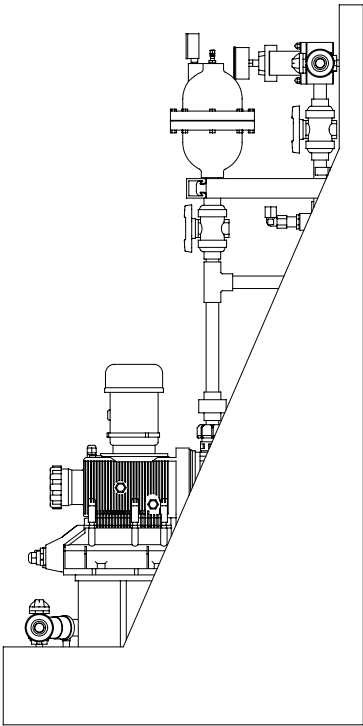
SIGMA SERIES METERING PUMP  
2 TYP.  
S2BAHM07120 MAX. CAPACITY: 38 GPH @ 100 PSIG  
S2CAHM07120 MAX. CAPACITY: 38 GPH @ 100 PSIG



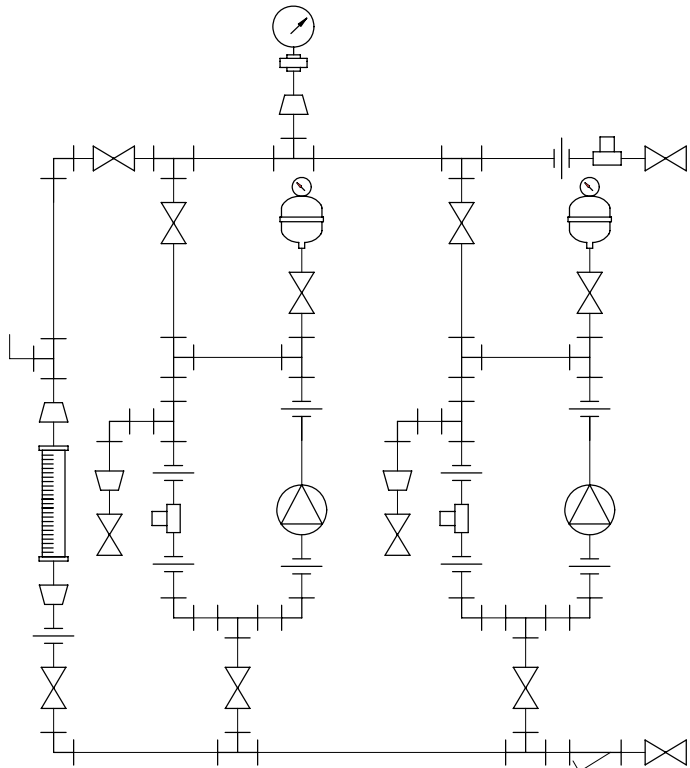
ISOMETRIC VIEW



FRONT VIEW



SIDE VIEW



PIPING SCHEMATIC

- NOTES:
- ALL PIPING AND FITTINGS SHALL BE 3/4" SCH. 80 PVC SOCKET WELD WITH VITON SEALS UNLESS OTHERWISE REQUIRED BY COMPONENTS.
  - ALL DIMENSIONS ARE IN INCHES AND ARE SHOWN FOR REFERENCE ONLY.

A	05/21/09	REVISED PER BASIC SKID		ALS	
0	01/18/08	FIRST ISSUE		GJS	
REV	DATE	DESCRIPTION		BY	APPD/REV
REVISIONS					
CUSTOMER <b>PROMINENT FLUID CONTROLS INC. (PRE-ENGINEERED SYSTEM)</b>					
JOB No		7749384		PURCHASE ORDER No	
TITLE <b>MS2B-D075_FLOOR_PVC\VITON_PD GENERAL ARRANGEMENT</b>					
THIS DRAWING IS THE PROPERTY OF PROMINENT FLUID CONTROLS INC. AND SHALL NOT BE COPIED OR TRANSFERRED WITHOUT THE WRITTEN CONSENT OF PROMINENT FLUID CONTROLS INC.					
ENGINEERS SEAL		<div><div><div><div></div><div>pfc</div><div>ProMinent</div></div><div><div>ProMinent®</div><div>THE PROMINENT GROUP OF COMPANIES</div></div></div><div><div>PITTSBURGH, PA USA</div><div>WWW.PROMINENT.US</div><div><div>PROMINENT FLUID CONTROLS LTD. 490 SOUTHGATE DRIVE. GUELPH, ONTARIO, CANADA N1H 6J3 TEL. 519 836 5692      FAX. 519 836 5226</div><div><div>PROMINENT FLUID CONTROLS INC. RIDC PARK WEST 136 INDUSTRY DRIVE, PITTSBURGH P.A., USA. 15275 TEL. 412 787 2484      FAX. 412 787 0704</div></div><div><div>DESIGNED <b>GJS</b></div><div>APPROVED</div><div>DRAWN <b>GJS</b></div><div>SCALE <b>N.T.S.</b></div><div>CHECKED <b>DTH</b></div><div>DATE <b>01/18/08</b></div></div></div></div></div>			
MAXIMUM TESTING PRESSURE = 150 PSI					
MAXIMUM OPERATING PRESSURE = 100 PSI					
CHEMICAL SERVICE =					
DWG No			REV		PAGE
7749384-200			A		1/1