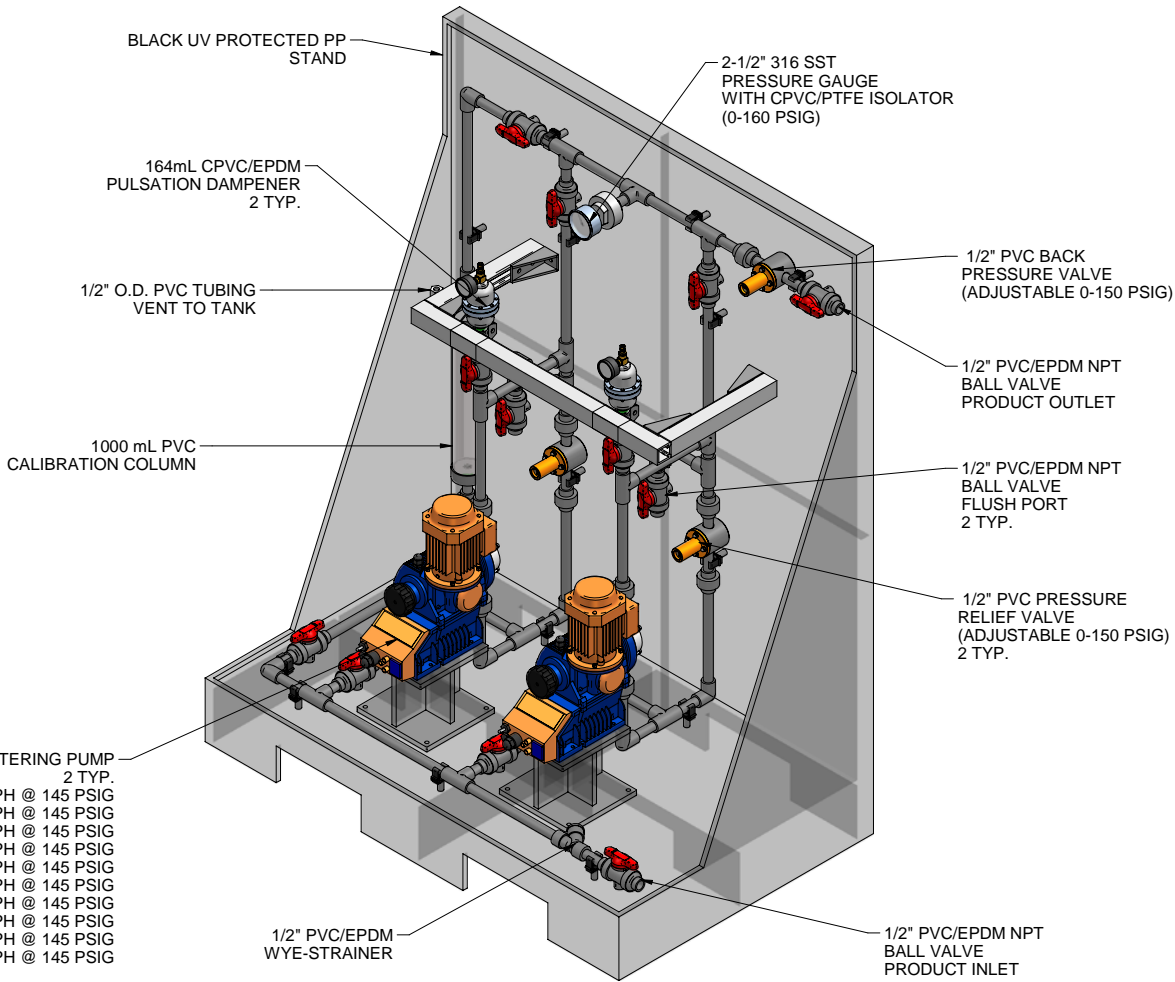
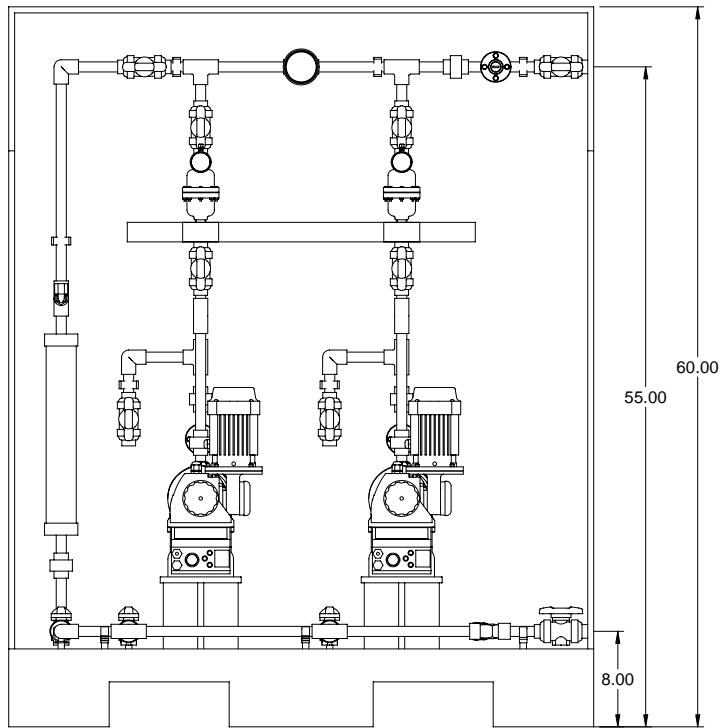


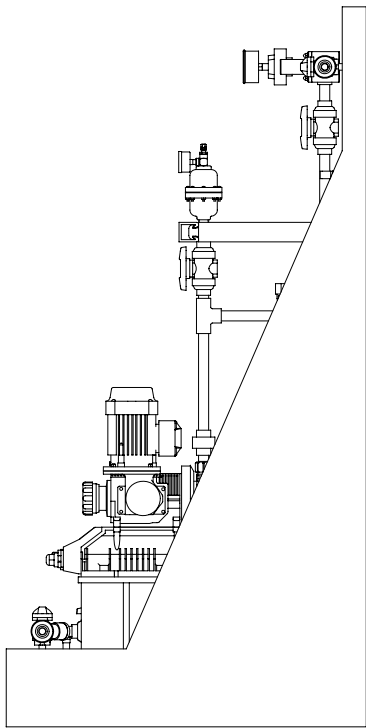
SIGMA SERIES METERING PUMP  
2 TYP.  
S1BAH10022 MAX. CAPACITY: 6.8 GPH @ 145 PSIG  
S1CAH10022 MAX. CAPACITY: 6.8 GPH @ 145 PSIG  
S1BAH10044 MAX. CAPACITY: 14.0 GPH @ 145 PSIG  
S1CAH10044 MAX. CAPACITY: 14.0 GPH @ 145 PSIG  
S1BAH10050 MAX. CAPACITY: 15.8 GPH @ 145 PSIG  
S1CAH10050 MAX. CAPACITY: 13.2 GPH @ 145 PSIG  
S1BAH12017 MAX. CAPACITY: 5.3 GPH @ 145 PSIG  
S1CAH12017 MAX. CAPACITY: 5.3 GPH @ 145 PSIG  
S1BAH12035 MAX. CAPACITY: 11.1 GPH @ 145 PSIG  
S1CAH12035 MAX. CAPACITY: 11.1 GPH @ 145 PSIG



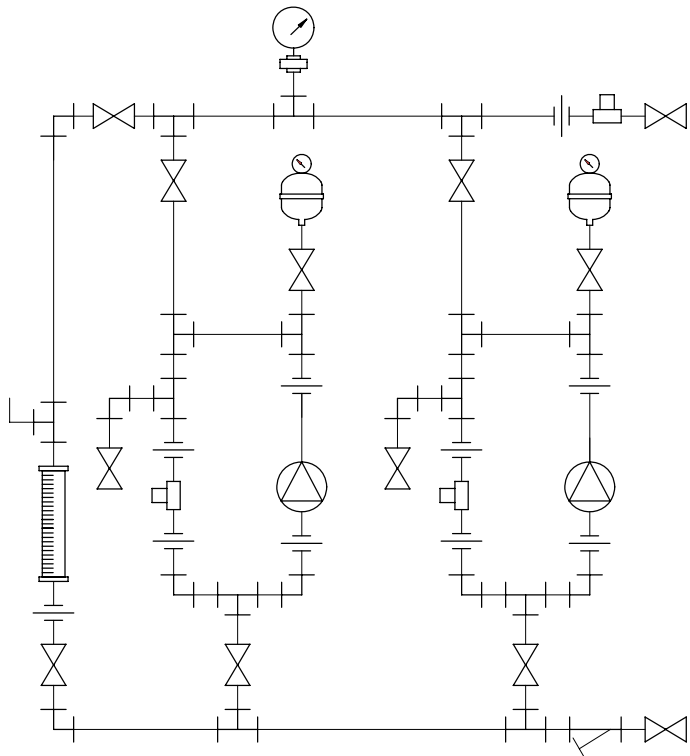
ISOMETRIC VIEW



FRONT VIEW



SIDE VIEW



PIPING SCHEMATIC

- NOTES:
- ALL PIPING AND FITTINGS SHALL BE 1/2" SCH. 80 PVC SOCKET WELD WITH EPDM SEALS UNLESS OTHERWISE REQUIRED BY COMPONENTS.
  - ALL DIMENSIONS ARE IN INCHES AND ARE SHOWN FOR REFERENCE ONLY.

|     |          |                        |     |      |      |
|-----|----------|------------------------|-----|------|------|
| A   | 05/21/09 | REVISED PER BASIC SKID | ALS |      |      |
| 0   | 03/24/08 | FIRST ISSUE            | GJS |      |      |
| REV | DATE     | DESCRIPTION            | BY  | APPD | REVD |

|           |  |                   |
|-----------|--|-------------------|
| REVISIONS |  |                   |
| CUSTOMER  | PROMINENT FLUID CONTROLS INC.<br>(PRE-ENGINEERED SYSTEM) |                   |
| JOB No    | 7749411  | PURCHASE ORDER No |
| TITLE     | MS2A-A050_FLOOR_PVC\EPDM_PD<br>GENERAL ARRANGEMENT       |                   |

THIS DRAWING IS THE PROPERTY OF PROMINENT FLUID CONTROLS INC. AND SHALL NOT BE COPIED OR TRANSFERRED WITHOUT THE WRITTEN CONSENT OF PROMINENT FLUID CONTROLS INC.

|                |  |  |
|----------------|--|--|
| ENGINEERS SEAL |  |  |
|                | PITTSBURGH, PA USA   | WWW.PROMINENT.US   |
|                | PROMINENT FLUID CONTROLS LTD. 490 SOUTHGATE DRIVE. GUELPH, ONTARIO, CANADA N1H 6J3 TEL. 519 836 5692 FAX. 519 836 5226 | PROMINENT FLUID CONTROLS INC. RIDC PARK WEST 136 INDUSTRY DRIVE, PITTSBURGH P.A., USA. 15275 TEL. 412 787 2484 FAX. 412 787 0704 |
|                | DESIGNED <b>GJS</b>  | APPROVED   |
|                | DRAWN <b>GJS</b>   | SCALE <b>N.T.S.</b>  |
|                | CHECKED <b>DTH</b>   | DATE <b>03/24/08</b>   |

|                              |         |
|------------------------------|---------|
| MAXIMUM TESTING PRESSURE =   | 150 PSI |
| MAXIMUM OPERATING PRESSURE = | 145 PSI |
| CHEMICAL SERVICE =           |         |

|        |             |     |   |      |     |
|--------|-------------|-----|---|------|-----|
| DWG No | 7749411-200 | REV | A | PAGE | 1/1 |
|--------|-------------|-----|---|------|-----|