

48.75

3.60

30.00

6.00

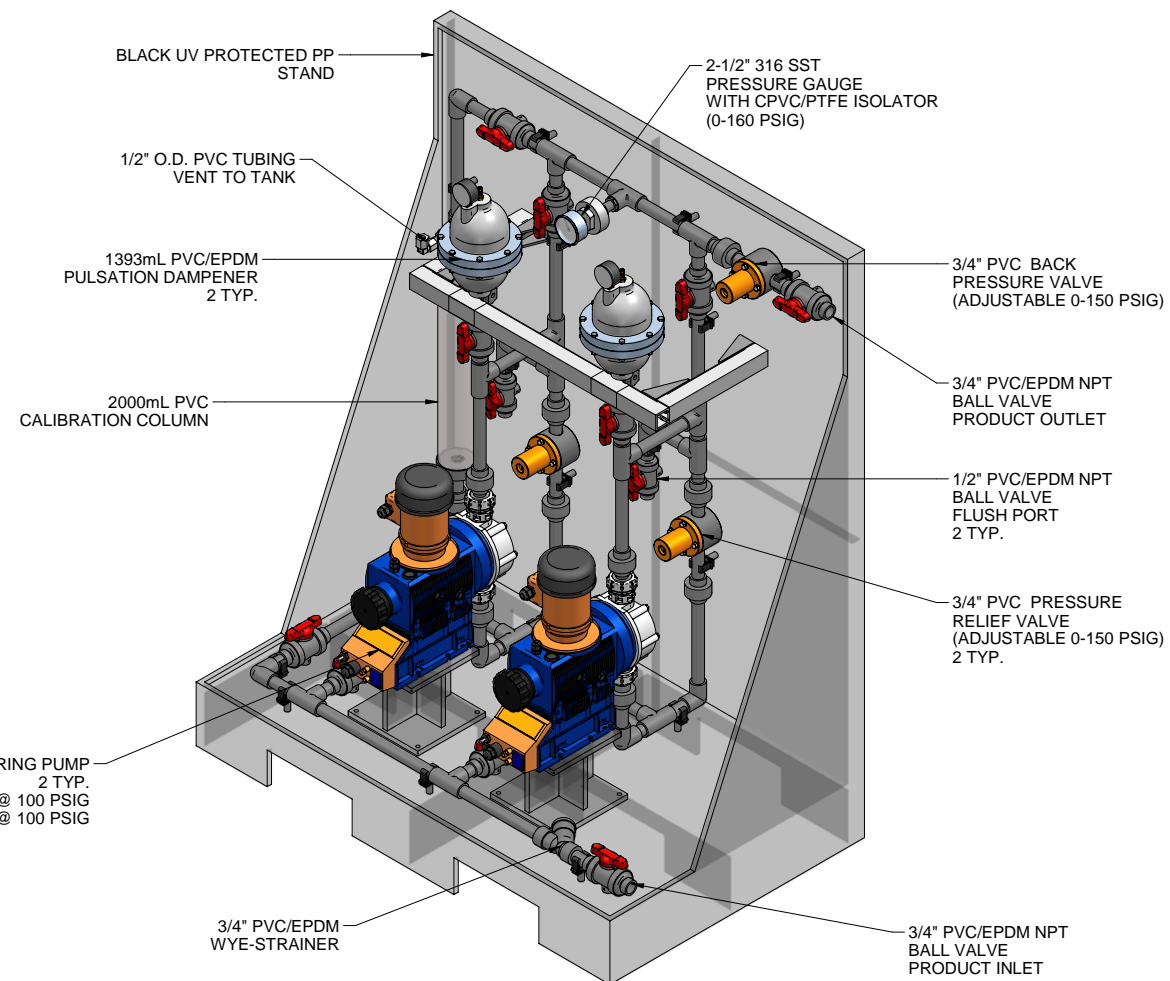
11.85

11.85

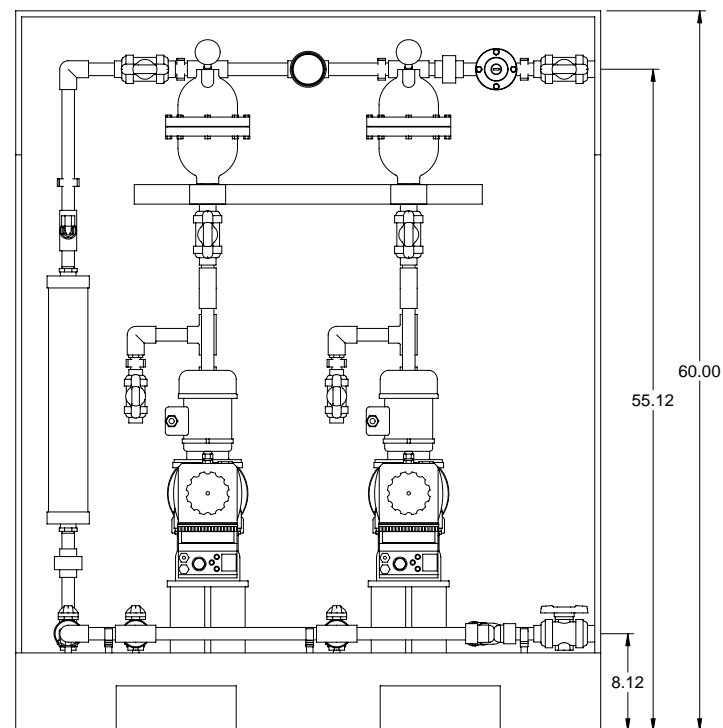
3.00

PLAN VIEW

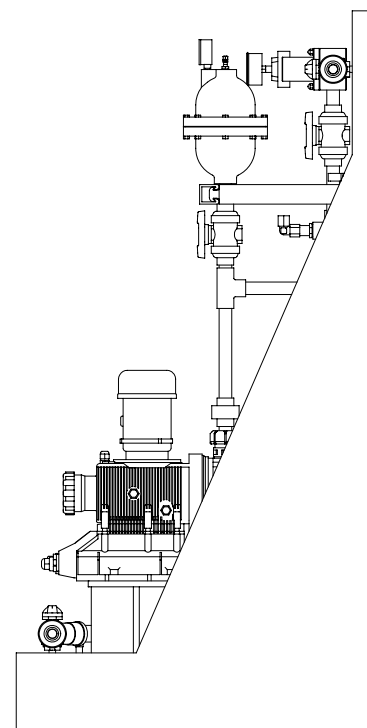
SIGMA SERIES METERING PUMP  
2 TYP.  
S2BAHM07120 MAX. CAPACITY: 38 GPH @ 100 PSIG  
S2CAHM07120 MAX. CAPACITY: 38 GPH @ 100 PSIG



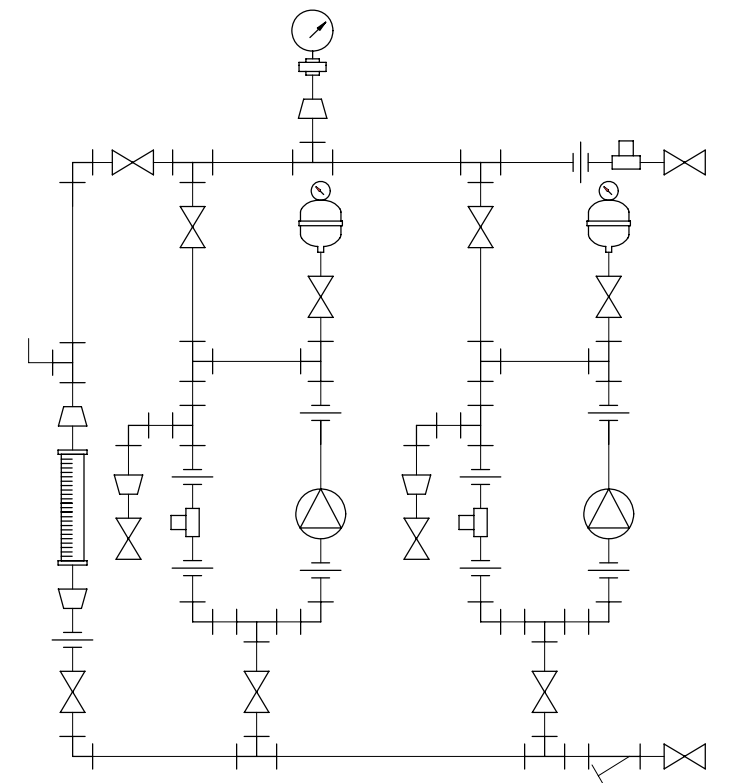
ISOMETRIC VIEW



FRONT VIEW



### SIDE VIEW



### PIPING SCHEMATIC

NOTES:

1. ALL PIPING AND FITTINGS SHALL BE 3/4" SCH. 80 PVC SOCKET WELD WITH EPDM SEALS UNLESS OTHERWISE REQUIRED BY COMPONENTS.
2. ALL DIMENSIONS ARE IN INCHES AND ARE SHOWN FOR REFERENCE ONLY.

A	05/22/09	REVISED PER BASIC SKID	ALS	
0	03/24/08	FIRST ISSUE	GJS	
REV	DATE	DESCRIPTION	BY	APPD REVD

## REVISIONS



CUSTOMER **PROMINENT FLUID CONTROLS INC.**  
**(PRE-ENGINEERED SYSTEM)**

JOB No	7749425
--------	---------

PURCHASE ORDER No
-------------------

TITLE	MS2B-D075_FLOOR_PVC\EPDM_PD GENERAL ARRANGEMENT
-------	--

THIS DRAWING IS THE PROPERTY OF PROMINENT FLUID CONTROLS INC. AND SHALL NOT BE COPIED OR TRANSFERRED WITHOUT THE WRITTEN CONSENT OF PROMINENT FLUID CONTROLS INC.

ENGINEERS SEAL				
	PITTSBURGH, PA USA		WWW.PROMINENT.US	
	PROMINENT FLUID CONTROLS LTD. 490 SOUTHGATE DRIVE. GUELPH, ONTARIO, CANADA N1H 6J3 TEL. 519 836 5692      FAX. 519 836 5226		PROMINENT FLUID CONTROLS INC. RIDC PARK WEST 136 INDUSTRY DRIVE, PITTSBURGH P.A., USA. 15275 TEL. 412 787 2484      FAX. 412 787 0704	
	DESIGNED	GJS	APPROVED	
	DRAWN	GJS	SCALE	N.T.S.
CHECKED	DTH	DATE	03/24/08	

MAXIMUM TESTING PRESSURE =	150 PSI
MAXIMUM OPERATING PRESSURE =	100 PSI
CHEMICAL SERVICE =	

	DWG No
--	--------

7749425-200

REV  
APAGE  
1/1