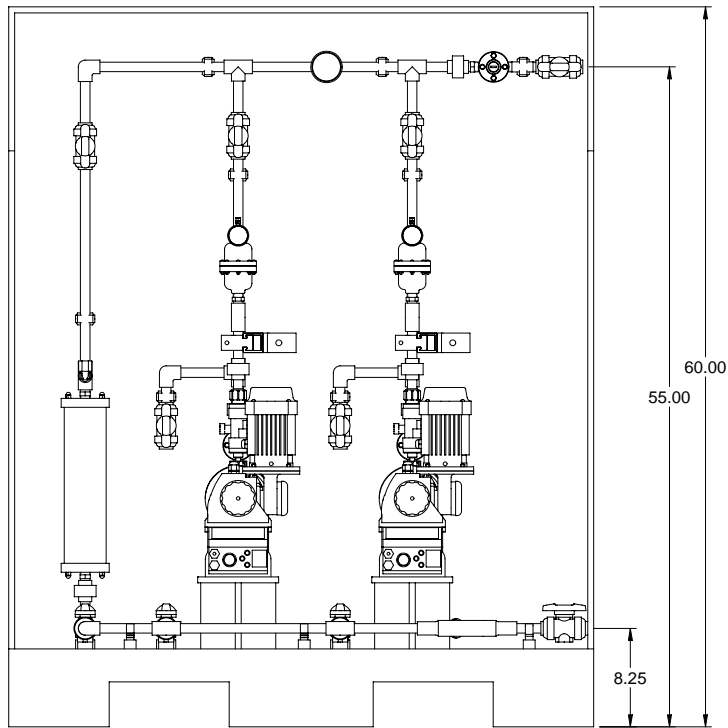
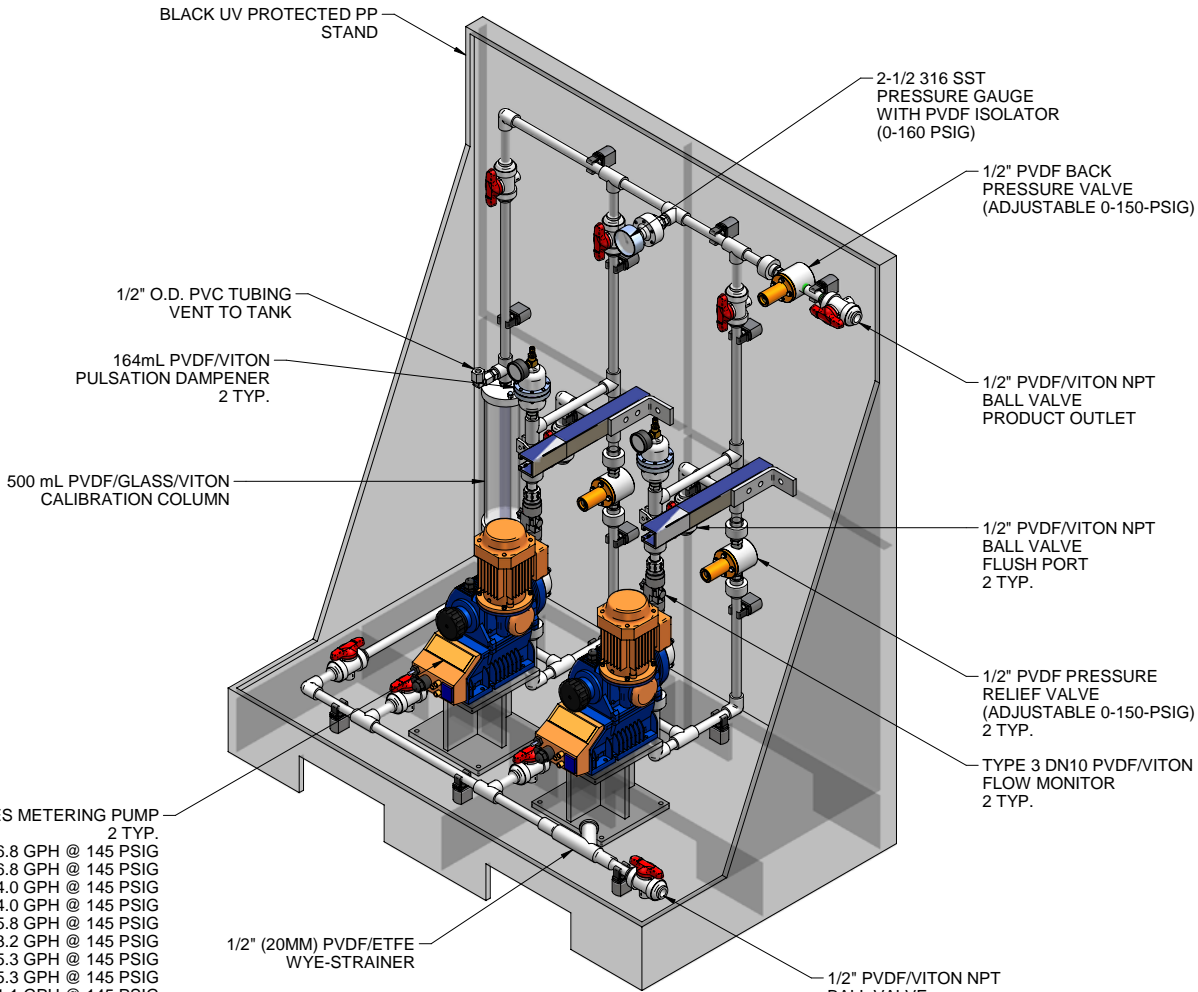


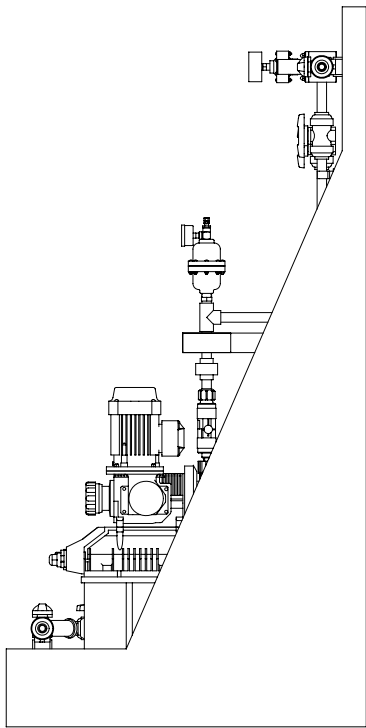
SIGMA SERIES METERING PUMP
2 TYP.
S1BAH10022 MAX. CAPACITY: 6.8 GPH @ 145 PSIG
S1CAH10022 MAX. CAPACITY: 6.8 GPH @ 145 PSIG
S1BAH10044 MAX. CAPACITY: 14.0 GPH @ 145 PSIG
S1CAH10044 MAX. CAPACITY: 14.0 GPH @ 145 PSIG
S1BAH10050 MAX. CAPACITY: 15.8 GPH @ 145 PSIG
S1CAH10050 MAX. CAPACITY: 13.2 GPH @ 145 PSIG
S1BAH12017 MAX. CAPACITY: 5.3 GPH @ 145 PSIG
S1CAH12017 MAX. CAPACITY: 5.3 GPH @ 145 PSIG
S1BAH12035 MAX. CAPACITY: 11.1 GPH @ 145 PSIG
S1CAH12035 MAX. CAPACITY: 11.1 GPH @ 145 PSIG



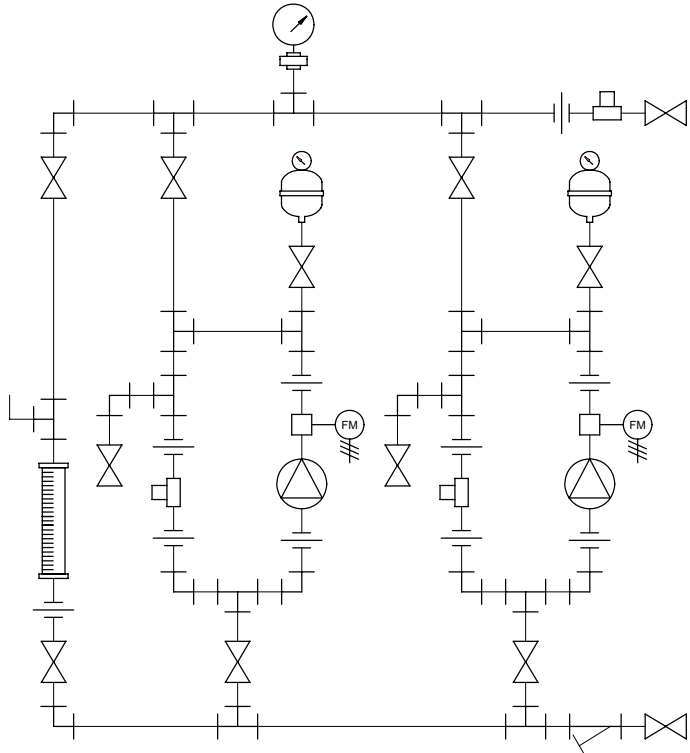
FRONT VIEW



ISOMETRIC VIEW



SIDE VIEW




PIPING SCHEMATIC

- NOTES:
- ALL PIPING AND FITTINGS SHALL BE 1/2"(20MM) SR232 PVDF FUSION WELD WITH VITON SEALS UNLESS OTHERWISE REQUIRED BY COMPONENTS.
 - ALL DIMENSIONS ARE IN INCHES AND ARE SHOWN FOR REFERENCE ONLY.

0	01/21/08	FIRST ISSUE	GJS		
REV	DATE	DESCRIPTION	BY	APPD	REVD

REVISIONS		
CUSTOMER	PROMINENT FLUID CONTROLS INC. (PRE-ENGINEERED SYSTEM)	
JOB No	7749466	PURCHASE ORDER No
TITLE	MS2A-A050_FLOOR_PVDFVITON_PD_FM GENERAL ARRANGEMENT	

THIS DRAWING IS THE PROPERTY OF PROMINENT FLUID CONTROLS INC. AND SHALL NOT BE COPIED OR TRANSFERRED WITHOUT THE WRITTEN CONSENT OF PROMINENT FLUID CONTROLS INC.

ENGINEERS SEAL			ProMinent® THE PROMINENT GROUP OF COMPANIES		
	PITTSBURGH, PA USA		WWW.PROMINENT.US		
	PROMINENT FLUID CONTROLS LTD. 490 SOUTHGATE DRIVE. GUELPH, ONTARIO, CANADA N1H 6J3 TEL. 519 836 5692 FAX. 519 836 5226		PROMINENT FLUID CONTROLS INC. RIDC PARK WEST 136 INDUSTRY DRIVE, PITTSBURGH P.A., USA. 15275 TEL. 412 787 2484 FAX. 412 787 0704		
	DESIGNED GJS		APPROVED		
	DRAWN GJS		SCALE N.T.S.		
CHECKED DTH		DATE 01/21/08			

MAXIMUM TESTING PRESSURE =	150 PSI
MAXIMUM OPERATING PRESSURE =	145 PSI
CHEMICAL SERVICE =	

DWG No	7749466-200	REV	0	PAGE	1/1
--------	-------------	-----	---	------	-----