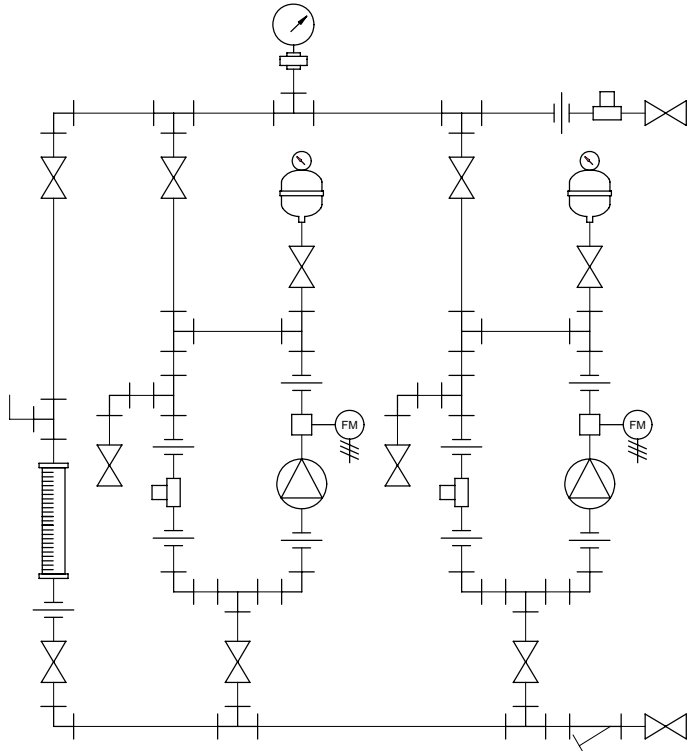
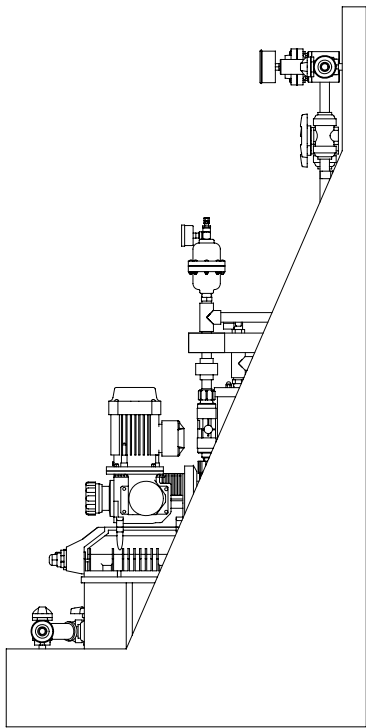
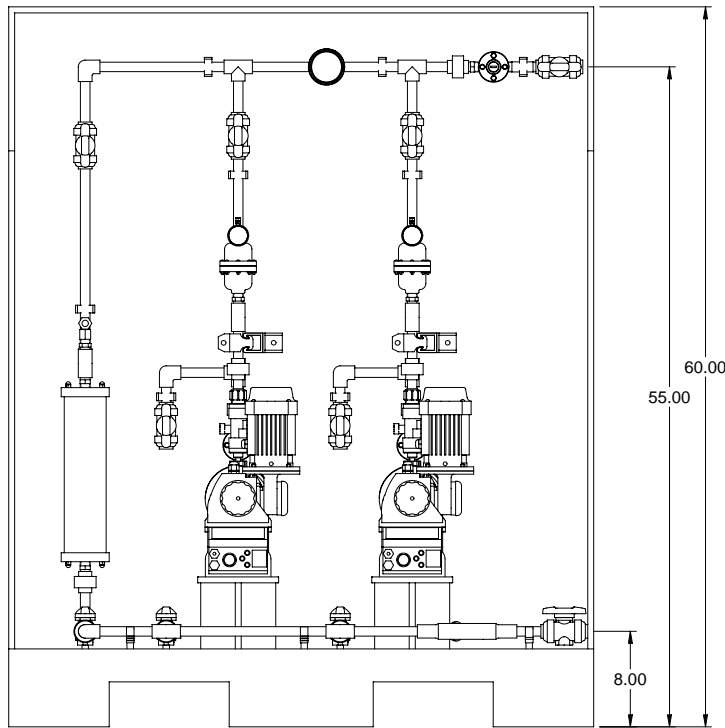
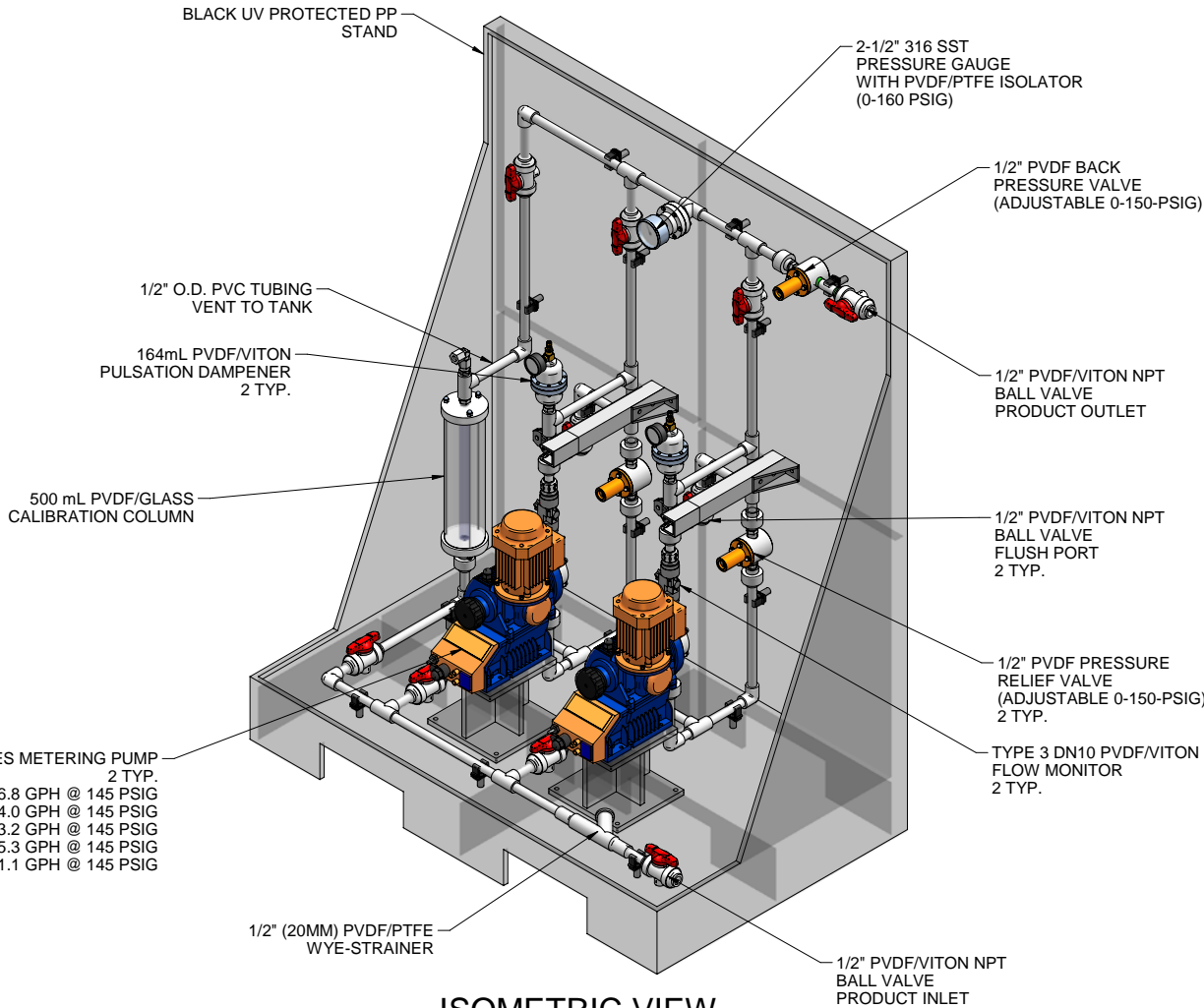


SIGMA SERIES METERING PUMP
2 TYP.
S1CAH10022 MAX. CAPACITY: 6.8 GPH @ 145 PSIG
S1CAH10044 MAX. CAPACITY: 14.0 GPH @ 145 PSIG
S1CAH10050 MAX. CAPACITY: 13.2 GPH @ 145 PSIG
S1CAH12017 MAX. CAPACITY: 5.3 GPH @ 145 PSIG
S1CAH12035 MAX. CAPACITY: 11.1 GPH @ 145 PSIG



- NOTES:
- ALL PIPING AND FITTINGS SHALL BE 1/2"(20MM) SR232 PVDF FUSION WELD WITH VITON SEALS UNLESS OTHERWISE REQUIRED BY COMPONENTS.
 - ALL DIMENSIONS ARE IN INCHES AND ARE SHOWN FOR REFERENCE ONLY.

A	09/17/09	REVISED PER UP-DATED PARTS	ALS		
0	01/21/08	FIRST ISSUE	GJS		
REV	DATE	DESCRIPTION	BY	APPD	REVD

REVISIONS		
CUSTOMER	PROMINENT FLUID CONTROLS INC. (PRE-ENGINEERED SYSTEM)	
JOB No	7749466	PURCHASE ORDER No
TITLE	MS2A-A050_FLOOR_PVDFVITON_PD_FM GENERAL ARRANGEMENT	

THIS DRAWING IS THE PROPERTY OF PROMINENT FLUID CONTROLS INC. AND SHALL NOT BE COPIED OR TRANSFERRED WITHOUT THE WRITTEN CONSENT OF PROMINENT FLUID CONTROLS INC.

ENGINEERS SEAL		
	PITTSBURGH, PA USA	WWW.PROMINENT.US
	PROMINENT FLUID CONTROLS LTD. 490 SOUTHGATE DRIVE. GUELPH, ONTARIO, CANADA N1H 6J3 TEL. 519 836 5692 FAX. 519 836 5226	PROMINENT FLUID CONTROLS INC. RIDC PARK WEST 136 INDUSTRY DRIVE, PITTSBURGH P.A., USA. 15275 TEL. 412 787 2484 FAX. 412 787 0704
	DESIGNED GJS	APPROVED
	DRAWN GJS	SCALE N.T.S.
	CHECKED DTH	DATE 01/21/08

MAXIMUM TESTING PRESSURE =	150 PSI
MAXIMUM OPERATING PRESSURE =	145 PSI
CHEMICAL SERVICE =	

DWG No	7749466-200	REV A	PAGE 1/1
--------	-------------	----------	-------------