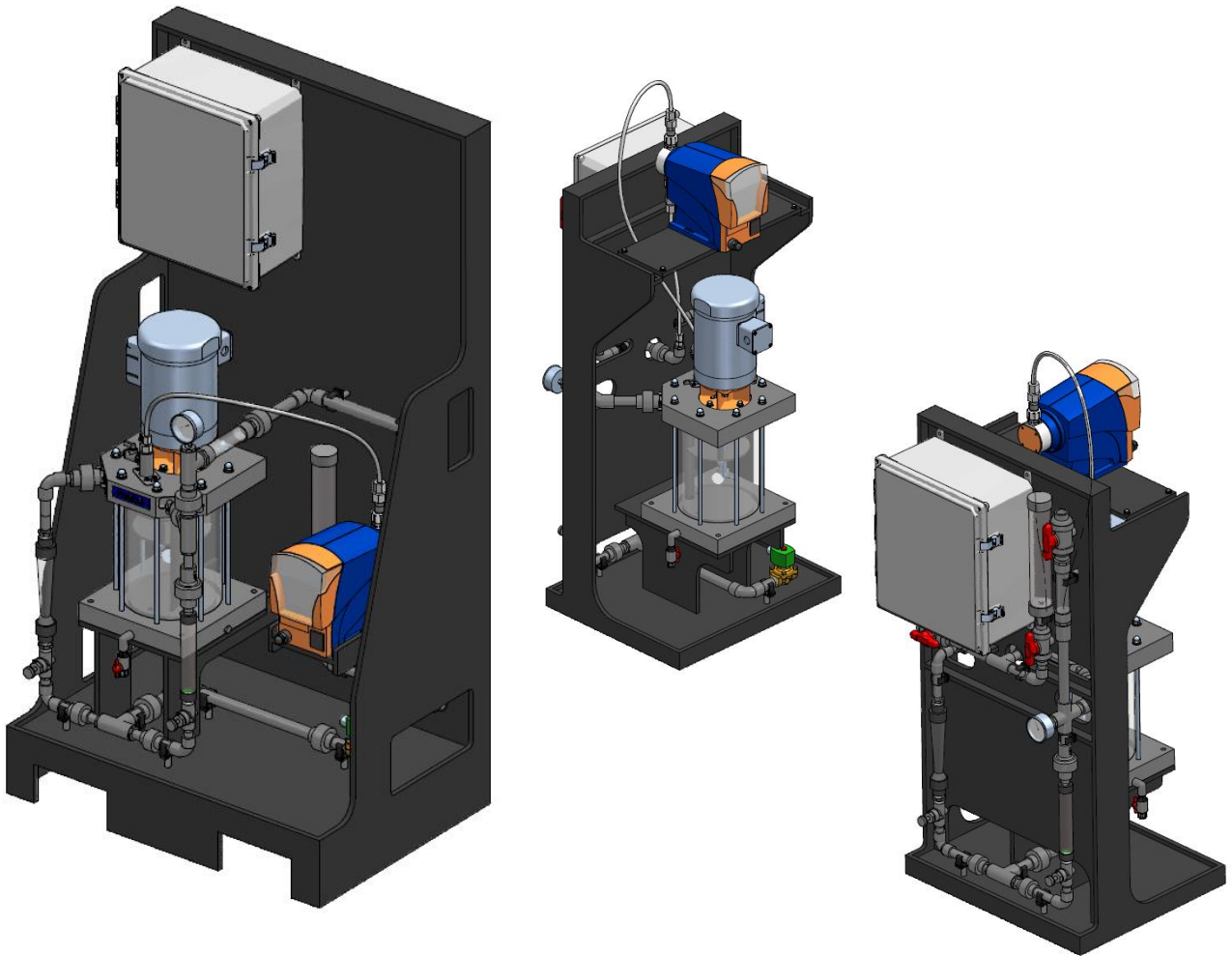


Operating Instructions ProMinent® ProMix-S & C Polymer Blending Systems



***Please completely read through these operating instructions first! Do not discard!
The warranty shall be invalidated by damage caused by operating errors!***

ProMix_S&C_IOM (02/26/2020): – P/N: 984704-(Rev-E)

ProMinent Fluid Controls, Inc. (USA) 136 Industry Drive, Pittsburgh, PA 15275

Tel: (412) 787-2484

www.prominent.us

Fax: (412) 787-0704

Table of Contents

i. Overview: 4

ii. ProMix S Systems with Peristaltic Pumps: 5

ii. ProMix S Systems with Diaphragm Pumps: 6

ii. ProMix C Systems with Peristaltic Pumps: 7

ii. ProMix C Systems with Diaphragm Pumps: 8

iii. Peristaltic Polymer Pumps used on S & C Models: 9

iv. Diaphragm Polymer Pumps used on S & C Models:..... 10

1.0 INSTALLATION & QUICK START GUIDE 11

 1.1 Safety:..... 11

 1.2 Delivery & Storage Checklist: 11

 1.3 Installation Considerations: 11

 1.4 Installation:..... 12

 1.5 Quick Start Guide:..... 13

 1.6 ProMix Options for Polymer Settings and Controller Door Switches..... 14

 1.7 Servicing Guidelines:..... 15

2.0 CONTROLLER..... 16

 2.1 Keypad Navigation 16

 2.2 Main Menu 17

 2.3 Adjust Setpoint..... 18

 2.4 Modify Timing..... 19

 2.5 Manually Flush Mixer 22

 2.6 Automatic Flush Mixer 22

 2.7 Status Message Summary..... 24

 2.8 Calibrate 4-20mA Input..... 25

 2.9 Scale the 4-20mA Input 26

 2.9 Scale the 4-20mA Input (continued) 27

 2.10 Response on Loss of 4-20 mA Input..... 28

 2.11 Calibrate 4-20mA Output..... 29

 2.12 Operation Configuration 30

 2.13 Feed Verification 31

2.15 4-20mA Controls 32

2.16 Troubleshooting Guide 32

2.17 Diagnostic Display..... 33

2.18 Blue White A-100NV Pump 34

3.0 SPARE PARTS & PREVENTIVE MAINTENANCE 35

3.1 BLUE WHITE A-100NV Pump Spare Parts 35

3.2 GAMMA XL Pump Spare Parts 35

3.3 PVC Mixing Chamber Spare Parts 36

3.4 Piping Components Spare Parts..... 36

3.5 Control Panel Spare Parts 36

3.6 Maintenance and Lubrication Schedule 31

Appendix A - TA Series Bill of Material 30

Appendix B – Control Panel “A Controls” 48

 B.2 Control Panel Drawings 50

 B.3 4-20 mA Input Scaling..... 56

Appendix C – Polymer Sizing / Dosage 57

Appendix D – Reference Documents 58

Appendix E - Keypad Menu Overview 59

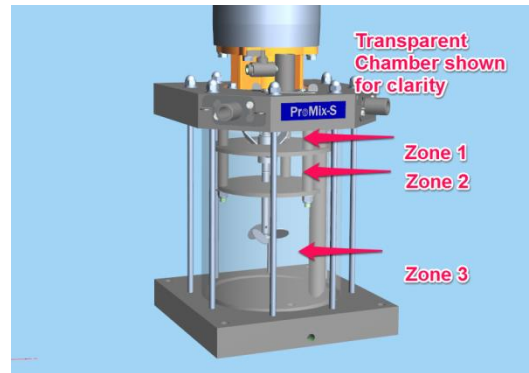
ProMinent ProMix 'S & C' Polymer Feeder

i. Overview:

The ProMix S & C "TA Series" Polymer Feeder is a skid system designed to control feed water and polymer and combine them to produce a high quality solution. The system is designed to receive liquid neat polymer while mixing it with feed water to produce and discharge a quality solution from the system.

Research in the science of polymer activation indicates that the activation energy must decrease as the polymeric chain is uncoiled to prevent rupture and hence decrease the performance of the product.

The mixing by the Polymer Feeder is accomplished mechanically with three distinct mixing zones separated by baffles. The first zone consists of a fast mixing blade that delivers high shear at the precise point of polymer injection, creating an immediate dispersion before agglomeration takes place. The second mixing zone induces a vortex and draws solution down through the center of the chamber from zone one and forces the solution outward to the sides and then down into the third zone. Finally, the third zone mixing blade gently agitates/blends the active polymer solution before it exits the chamber via the discharge tube.



The ProMix S & C Polymer Feeder controller offers several operating options. These options are selected using various combinations of the controller door switch positions and polymer type selections via the controller menu. The controller allows the polymer pump speed to be controlled either locally via the keypad or remotely via a customer supplied 4-20 mA signal over a 0 to 100% speed range. The polymer dosage rate must be calculated and the pump adjusted for the desired ratio concentration of polymer to dilution water leaving the feeder by volume. Different maximum concentrations are possible based upon the type of polymer. Emulsion polymers should be limited to a maximum of 1% concentration in the mixing chamber and Mannich polymers should not exceed 10% in the mixing chamber. The polymer type to be used is selectable from the keypad menu.

The System Start switch on the controller door has three positions, ON, OFF and REMOTE. ON enables the controller locally and REMOTE allows the controller to be enable via a customer supplied dry contact. The Polymer Pump switch has two positions, LOCAL and REMOTE. Placing the System Start switch in the OFF position after having first been in either of the other two positions will initiate a flush cycle for the system before shutting down.

The Polymer Pump switch on the controller front door has two positions to choose the source of the pump control signal. In the LOCAL position the controller uses the keypad entry for polymer pump speed. In the REMOTE position a user supplied 4-20 mA signal representing 0 – 100% pump speed controls the pump. The user must manually adjust the primary and post dilution valves for the desired dilution water flow rate and must calculate the required pump speed to attain the desired concentration. Rotameters are provided to monitor the dilution water flow rates.

The ProMix Polymer Feeder is equipped with all the necessary components for easy installation, reliable performance and safe operation. The design incorporates an electric solenoid valve (water inlet), flow meter/switch, manually adjustable rotameters for primary and secondary dilution flow, either a peristaltic or diaphragm type neat polymer pump (depending on model), microprocessor based controller, manual ball valves, pump calibration column, PVC piping and components, and polymer mixing chamber mounted on a skid to facilitate proper mixing and delivery.

ProMinent ProMix 'S & C' Polymer Feeder

ii. ProMix S Systems with Peristaltic Pumps:

Peristaltic Pump Type Blue-White (A-100NV Series):

SYSTEM PART NO.	MODEL	PUMP TYPE	MAX CAPACITY
1048346	60X1-0.22TA	Blue White A1N00V-1T	0.22 GPH
1048347	60X2-0.95TA	Blue White A1N30V-1T	0.95 GPH
1048348	120X2-0.95TA	Blue White A1N30V-1T	0.95 GPH
1048349	120X2-2.00TA	Blue White A1N30V-2T	2.00 GPH
1048351	300X2-2.00TA	Blue White A1N30V-2T	2.00 GPH
1048352	300X2-3.73TA	Blue White A1N20V-3T	3.73 GPH

Refer to Appendix C for proper sizing

Overall Skid Dimensions	24" x 34" x 66" (L x W x H)
Overall Weight of Skid	Approx 170 lbs.
Power Requirements	120 VAC, 60 Hz, 1 Phase, 15 Amp
Control panel FLA	11.2 Amp
Volume of Mixing Chamber	2.0 Gallons
Maximum Rated Chamber Pressure	150 PSIG
Maximum Operating Chamber Pressure	100 PSIG
Normal Operating Pressure	50 PSIG or 65 PSIG (Depends on Pump Selected)
Recommended Running Temperature	+50°F to 100°F
Water Connection Size	¾" FNPT
Solution Discharge Connection Size	¾" FNPT
Neat Polymer Inlet Connection Size	½" FNPT
Drain Connection	¼" FNPT

ProMinent ProMix 'S & C' Polymer Feeder

ii. ProMix S Systems with Diaphragm Pumps:

Diaphragm Pump Type ProMinent Gamma XL Series:

SYSTEM PART NO.	MODEL	PUMP TYPE	MAX CAPACITY
1048353	60X1-1.01DA	GLXAUS1608PVT4V000UV4030EN	2.06 GPH
1048354	60X2-1.01DA	GLXAUS1608PVT4V000UV4030EN	2.06 GPH
1048355	120X2-1.01DA	GLXAUS1608PVT4V000UV4030EN	2.06 GPH
1048356	120X2-2.30DA	GXLAUS1020PVT4V000UV4030EN	5.18 GPH
1048357	300X2-2.30DA	GXLAUS1020PVT4V000UV4030EN	5.18 GPH
1048358	300X2-3.70DA	GXLAUS0730PVT4V000UV4030EN	7.76 GPH

Refer to Appendix C for proper sizing

Overall Skid Dimensions	24" x 34" x 66" (L x W x H)
Overall Weight of Skid	Approx 170 lbs.
Power Requirements	120 VAC, 60 Hz, 1 Phase, 15 Amp
Control panel FLA	11.5 Amp
Volume of Mixing Chamber	2.0 Gallons
Maximum Rated Chamber Pressure	150 PSIG
Maximum Operating Chamber Pressure	100 PSIG
Normal Operating Pressure	100 PSIG
Recommended Running Temperature	+50°F to 100°F
Water Connection Size	3/4" FNPT
Solution Discharge Connection Size	3/4" FNPT
Neat Polymer Inlet Connection Size	1/2" FNPT
Drain Connection	1/4" FNPT

ii. ProMix C Systems with Peristaltic Pumps:

Peristaltic Pump Type Blue-White (A-100NV Series):

SYSTEM PART NO.	MODEL	PUMP TYPE	MAX CAPACITY
1048360	60X1-0.22TA	Blue White A1N00V-1T	0.22 GPH
1048361	60X2-0.95TA	Blue White A1N30V-1T	0.95 GPH
1048362	120X2-0.95TA	Blue White A1N30V-1T	0.95 GPH
1048363	120X2-2.00TA	Blue White A1N30V-2T	2.00 GPH
1048364	300X2-2.00TA	Blue White A1N30V-2T	2.00 GPH
1048365	300X2-3.73TA	Blue White A1N20V-3T	3.73 GPH

Refer to Appendix C for proper sizing

Overall Skid Dimensions 26" x 24" x 50" (L x W x H)
 Overall Weight of Skid Approx. 130 lbs.
 Power Requirements 120 VAC, 60 Hz, 1 Phase, 15 Amp
 Control panel FLA 11.2 Amp
 Volume of Mixing Chamber 2.0 Gallons
 Maximum Rated Chamber Pressure 150 PSIG
 Maximum Operating Chamber Pressure 100 PSIG
 Normal Operating Pressure 50 PSIG or 65 PSIG (Depends on Pump Selected)
 Recommended Running Temperature +50°F to 100°F
 Water Connection Size 3/4" FNPT
 Solution Discharge Connection Size 3/4" FNPT
 Neat Polymer Inlet Connection Size 1/2" FNPT
 Drain Connection 1/4" FNPT

ProMinent ProMix 'S & C' Polymer Feeder

ii. ProMix C Systems with Diaphragm Pumps:

Diaphragm Pump Type ProMinent Gamma XL Series:

SYSTEM PART NO.	MODEL	PUMP TYPE	MAX CAPACITY
1048460	60X1-1.01DA	GLXAUS1608PVT4V000UV4030EN	2.06 GPH
1048461	60X2-1.01DA	GLXAUS1608PVT4V000UV4030EN	2.06 GPH
1048462	120X2-1.01DA	GLXAUS1608PVT4V000UV4030EN	2.06 GPH
1048463	120X2-2.30DA	GXLAUS1020PVT4V000UV4030EN	5.18 GPH
1048474	300X2-2.30DA	GXLAUS1020PVT4V000UV4030EN	5.18 GPH
1048475	300X2-3.70DA	GXLAUS0730PVT4V000UV4030EN	7.76 GPH

Refer to Appendix C for proper sizing

Overall Skid Dimensions	26" x 24" x 50" (L x W x H)
Overall Weight of Skid	Approx. 170 lbs.
Power Requirements	120 VAC, 60 Hz, 1 Phase, 15 Amp
Control panel FLA	11.5 Amp
Volume of Mixing Chamber	2.0 Gallons
Maximum Rated Chamber Pressure	150 PSIG
Maximum Operating Chamber Pressure	100 PSIG
Normal Operating Pressure	100 PSIG
Recommended Running Temperature	+50°F to 100°F
Water Connection Size	3/4" FNPT
Solution Discharge Connection Size	3/4" FNPT
Neat Polymer Inlet Connection Size	1/2" FNPT
Drain Connection	1/4" FNPT

ProMinent ProMix 'S & C' Polymer Feeder

iii. Peristaltic Polymer Pumps used on S & C Models:

Series	Part Number	Ident Code	RPM Max	Flowrate (GPH)		Pressure (PSIG)
				Min Rated	Max Rated	
A-100NV	1061489	A1N00V-1T	14	0.012	0.24	65
A-100NV	1061490	A1N30V-1T	60	0.053	1.06	65
A-100NV	1061491	A1N30V-2T	60	0.111	2.22	65
A-100NV	1061492	A1N20V-3T	45	0.207	4.14	50

Notes:

1. Blue White Peristaltic Pumps
2. GPH Rating above based upon pumping Water not Polymer
3. Power Requirements: 120VAC, 60Hz, Single Phase (0.35 Amp)
4. Suction Lift Capabilities: Approx 30ft. (based on water)
5. Tubing: Tygothane

iv. Diaphragm Polymer Pumps used on S & C Models:

Series	Identification Code	Factory Default Mode	SPM Max	Flowrate (GPH)		Pressure (PSIG)
				Min @ 100% Stroke	Max @ 100% Stroke	
GXLA	GLXAUS1608PVT4V000UV4030EN	HV2	120	0.008	1.27	145
GXLA	GXLAUS1020PVT4V000UV4030EN	HV2	120	0.019	3.23	145
GXLA	GXLAUS0730PVT4V000UV4030EN	HV2	120	0.031	4.76	102

Notes:

1. ProMinent – Gamma XL Solenoid Driven Metering Pump
2. Original Pump GPH rating is derated 20% due to Polymer viscosity. The actual deration may vary depending on the polymer used
3. Control Modes Available *
 - a. Standard – 200 spm: 0-50 cp
 - b. HV1 (slightly reduced discharge speed) – 160 spm: 50-200 cp
 - c. HV2 (moderately reduced discharge speed) – 120 spm: 200-500 cp
 - d. HV3 (maximum reduced discharge speed)– 80 spm: 500-1000 cp
4. Connections: ½" x 3/8" or DN10 Depending on Model Selected
5. Power Requirements: 115VAC, 60 Hz, Single Phase

* Viscosity values are approximate and can vary widely per specific application. Use these values as a guideline only and consult the factory for specific application capabilities

1.0 INSTALLATION & QUICK START GUIDE

1.1 Safety:

Utilize appropriate protective safety gear when operating or maintaining this equipment. Recommended safety gear is as follows:

Personal Protective Equipment (PPE):

- Hard Hats (Where overhead hazards exist)
- Safety Glasses with side shields
- PVC Apron
- PVC Gloves
- Safety-Toed Work Boots

1.2 Delivery & Storage Checklist:

1. Check packing list for completeness and note any missing items immediately.
2. Inspect equipment and shipping container for damages before accepting delivery.
Make note of the carrier's bill-of-lading the extent of the damage, if any, and notify the carrier.
3. Store the equipment on firm level surface in original packing container. Do not store the equipment where it may be exposed to extreme temperatures, precipitation, humidity, or dust. Avoid direct sunlight that could overheat and damage equipment.

Ambient Conditions for storage and transport:

Temperature: 14°F to 120°F

Air Humidity: ≤ 92% relative humidity, non-condensing

1.3 Installation Considerations:

- Required Polymer System Voltage
- Available Water Pressure
- Injection Point Pressure
- Number of Injection Points
- Polymer Solution Discharge: For example (Length of Piping Run and Pipe Size)
- Neat Polymer Suction: Flooded or Lift
- Type of Application / Dewatering Device
- Type of Polymer: Emulsion, Dispersion, Solution

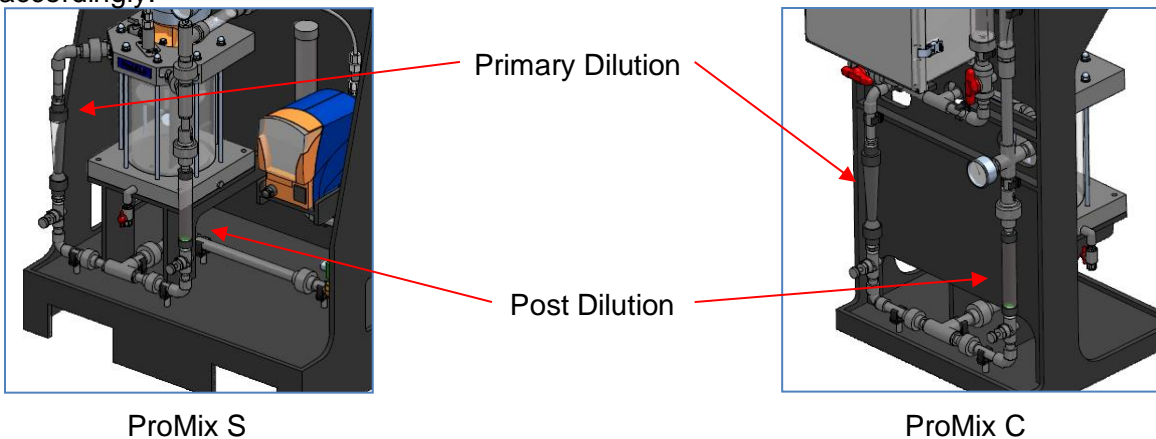
1.4 Installation:

1. Unpack and position equipment on sturdy level surface. Fasten to prevent movement.
2. Do not install equipment in areas of extreme heat, cold, dust or humidity. Avoid areas where objects or fluids can drop from overhead.
3. Units are to be installed as close to the point of application as possible.
4. Inlet pressure is not to exceed 100 psig working pressure.
5. System pressure at the discharge is not to exceed 80% of inlet pressure.
6. Piping Internal to the System:
 - a. Inspect the piping for breakage. The system may have been jarred during shipping.
 - b. Check the tightness on all unions. Hand tighten only – no tools. Unions incorporate an o-ring seal. Ensure that the o-ring is seated properly prior to tightening.
7. Piping External to the System (*Reference Appendix A for connection location*):
 - a. Install piping so that connections properly meet system termination points. Do not “stretch” field installed piping to meet system termination points. Stressed piping will fail!
 - b. Piping should be at a minimum $\frac{3}{4}$ ” to and from the piping on the system.
 - c. Avoid getting dirt and debris inside the piping during installation. Plug ends of piping with rags if construction activities are underway. All debris must be flushed from piping before system start-up.
 - d. Connect to outlet piping $\frac{3}{4}$ ” FNPT from static mixer to associated customer application point.
 - e. Connect to make-up water inlet piping $\frac{3}{4}$ ” FNPT (5 GPM maximum at 100 psig maximum).
 - f. Connect to Neat Polymer pump inlet piping $\frac{1}{2}$ ” FNPT.
 - g. Install $\frac{3}{4}$ ” pressure regulator and $\frac{3}{4}$ ” y-strainer / basket strainer on the clean make-up water line if equipment is currently not installed. (Recommended)
 - h. Allow provisions for draining the system piping. Skid components will require maintenance. Ensure that chemicals can be evacuated from the skid piping and components for servicing.
8. Electrical Supply Needed for the System:
 - a. Note: Review local Electrical Code and follow accordingly.
 - b. Connect incoming power to skid mounted control panel (120VAC, Single Phase, 15 Amp, 60 Hz). Ensure panel is properly grounded.
 - c. Check electrical connections to be sure proper voltage is supplied to the system.
 - d. Power the unit using a dedicated, separate breaker in the local lighting distribution panel.
 - e. Do not route the AC power in common conduit with variable frequency pump drives.
 - f. Do not put conduit entries in the top of the control panel. Resulting conduit condensation and failure to seal may damage controller circuit boards.
9. The Overload relay should be set to the Motor Nameplate Full Load Amps. Setting this to a higher value will result in possible damage to the motor and associated wiring. Overload conditions should be investigated and possible process changes may need to be made to prevent overload conditions.
10. Connect Digital Remote Start Functions (note wiring termination points in Appendix B) for polymer tank level and remote start permissive. Default jumpers should remain in place for any input not available.
11. Refer to the Blue White A-100NV Installation & Maintenance Manual regarding pump information.

ProMinent ProMix 'S & C' Polymer Feeder

1.5 Quick Start Guide:

1. After the installation guidelines (Section 1.4) of the manual.
2. Open ball valve on the suction of the pump to allow chemical to flow into the system by gravity. If the application is suction lift then ensure liquid is present in pump suction.
3. Start up pumps at 100% stroke length and frequency to purge all air and prime the system. To prime the pump press and hold the PRIME button on the keypad until chemical is visible in the suction line.
4. Verify motor rotation on Mixing Chamber motor. Normal rotation is CCW.
5. Do not run the mixing chamber motor dry. Damage to the mechanical seal could occur.
6. Close the Post Dilution flow control valve and adjust the Primary Dilution flow control valve to obtain the flow range required. If additional dilution water is needed adjust the secondary accordingly.



7. Verify that the maximum polymer injection pump pressure is higher than the system pressure.
8. Perform pump calibration using drawdown calibration cylinder.
9. Check flow calibration and be sure pump meets or exceeds the rated flow capacity.
10. Check flows at 100% capacity.
11. In System Start ON and Polymer Pump LOCAL switch positions the neat polymer pump speed is adjusted manually using the controller keypad to change the pump rate from 0 to 100% of the pump rated output.
12. In System Start ON and Polymer Pump REMOTE switch positions the controller receives a remote customer supplied analog 4-20 mA signal to adjust the desired pump speed from 0 to 100% of the pump rated output. This remote 4-20 mA signal can be scaled at the controller to enhance the resolution of the pump output control and bias the pump response to the remote signal. A remote start permissive is optional – if used then System Start switch should be in the REMOTE position.
13. Confirm proper operation of all instrumentation. For example: Gauge, Rotometer switch, etc.
14. Input functions checked and simulated (remote start/stop, 4-20mA, etc.).
15. Output functions checked.
16. Test the operation of all remaining circuits.
17. Observe system to assure that nothing looks or sounds abnormal.

1.6 ProMix Controller Door Switches

Manually adjust the two door switches, 'System Start' and 'Polymer Pump' for the desired operating conditions:

System Start door switch

Permits use of remote contact to enable system operation in REMOTE position.

Polymer Pump door switch

Determines the set point for pump control action which can be from the keypad entry in LOCAL or from a 4-20 mA signal in REMOTE.

Door switch options:

System Start ON-OFF-REMOTE controller door switch	Polymer Pump LOCAL-REMOTE controller door switch	PROMIX OPERATION
ON	LOCAL	Remote Start Contact: N/A Keypad Local Setpoint: 0 – 100% pump speed Remote Setpoint: N/A Max. chamber concentration: 1.0%
ON	REMOTE	Remote Start Contact: N/A Keypad Local Setpoint: N/A Remote Setpoint: 4-20 mA = 0 – 100% pump speed Max. chamber concentration: 1.0%
REMOTE	LOCAL	Remote Start Contact: Close=start, open=stop Keypad Local Setpoint: 0 – 100% pump speed Remote Setpoint: N/A Max. chamber concentration: 1.0%
REMOTE	REMOTE	Remote Start Contact: Close=start, open=stop Keypad Local Setpoint: N/A Remote Setpoint: 4-20 mA = 0 – 100% pump speed Max. chamber concentration: 1.0%

ProMinent ProMix 'S & C' Polymer Feeder

1.7 Servicing Guidelines:

- Disconnect electrical power to the equipment prior to servicing.
- Relieve all pressure from the unit prior to servicing.
- Close all suction and discharge valves.
- Verify dilution water is closed.
- Drain chemical/water from unit prior to disassembly.
- Maintain protective covers over all moving parts.
- Keep body parts, hair and foreign objects from contact with moving parts.
- Do not allow grease or oil to be used or stored around the feed equipment or chemicals.
- Review the Material Safety Data Sheets of the Polymer utilized and observe appropriate safety measures.
- Mineral Oil can be utilized to aid in the polymer cleaning process.

Ensure all operating & maintenance personnel are instructed regarding the contents of this manual

2.0 CONTROLLER

2.1 Keypad Navigation

The ProMinent ProMix S Polymer Feeder uses a fixed configuration to deliver the operation required to operate the feeder. The main board is not interchangeable with other ProMinent controller hardware.

The top line of the main menu displays the current feeder state on power ON

Press **EXIT** during any main menu display & you'll return to the top of the menu & the current feeder state.

The other main menu displays show information you'll need to set & adjust feed rate and to verify flowswitch, 4-20mA in & out...

UP & DOWN to view options
or to EDIT numbers



Move **RIGHT** to select next
field when EDITing



ENTER to select an option
& to execute EDITing



EXIT to escape option,
info display or EDITing
EXIT goes to top of **Main Menu**



ProMinent ProMix 'S & C' Polymer Feeder

2.2 Main Menu

This is the power ON, top of the menu display.
Press **EXIT** at any display to return here.
Displays the **Polymer** feed rate 0-100% and the current state of the feeder. See 1.6 for complete state table.

Displays the **Polymer Pump** feed rate 0-100% and the controlling 4-20mA current level,

Press **ENTER** @ **Polymer Pump** to view-adjust the Manual Setpoint & Calibrate the 4-20mA controlling the pump.

Mixer ON time resets to zero every time the **Mixer** turns OFF.

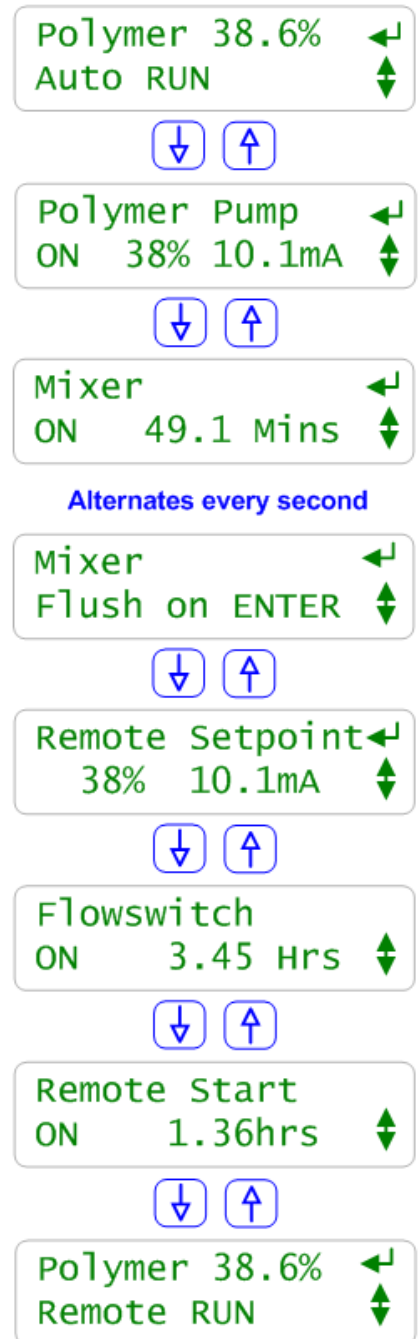
Press **ENTER** during **Remote RUN** or **Local RUN** to turn OFF the **Polymer pump** and flush the mixer.

The **Remote Setpoint** 4-20mA current loop controls the **Polymer Pump** in **Remote RUN** mode.
Press **ENTER** to calibrate.

Flowswitch ON time resets to zero every time the **Flowswitch** turns OFF.
After 24 hours displays **>1Day**.

The **Remote Start** contacts must be closed for the polymer feeder to run.
Remote Start time resets to zero every time the contact set opens.

We're now back at the top of the main menu.



Sidebar:

Press **ENTER** at **Polymer** to view and adjust feeder **Fill, Flush & Wait-for-Flow** timing.

Press **ENTER** & **UP** at **Polymer** to view feeder **Diagnostics**. Refer to 2.17 for **Diagnostic** displays.

2.3 Adjust Setpoint

Press **ENTER** @ **Polymer Pump**
to view or adjust the **Local Setpoint**.

Local Setpoint may be adjusted at any time if
Polymer Pump switch is
set to Local mode.



The present **Local Setpoint** is **25.0%**.
Press **ENTER** to adjust.

Key **RIGHT** to move the cursor &
UP or **DOWN** to change the digit.
Key **EXIT** to abandon or **ENTER** to execute.

Displays new, adjusted **Local Setpoint**.
Press **EXIT** to return to main menu.

If the Polymer Pump switch is in the **Local** position, any
adjustment takes effect immediately, modifying the
4-20mA output to the pump.

Adjust Local Setpoint

Polymer Pump 
ON 38% 10.1mA 



Local Setpoint 
25.0% 



Edit & ENTER 
32.4% 



then



Local Setpoint 
32.4% 

Sidebar:

Local Setpoint only controls the polymer pump when the Auto-Manual switch is @ Local.

If the **Local Setpoint** is @ 25% the 4-20 mA current output loop will be at 8mA ($4\text{mA} + 0.25 \times 16\text{mA} = 8\text{mA}$).

Remote Setpoint only controls the polymer pump when the Polymer Pump switch is @ Remote. The polymer pump speed is then controlled by the remote 4-20 mA signal.

ProMinent ProMix 'S & C' Polymer Feeder

2.4 Modify Timing

Press **ENTER** @ **Polymer**
to view or adjust the feeder timing.

Fill Time is the time that the feeder waits to fill the feeder prior to turning on the **Polymer Feed** pump. This protects the mechanical seal of the mixer motor shaft by keeping it wet. Minimum time is 30 seconds for the first fill only. Thereafter this step is skipped if operation pauses unless electrical power to the controller is cycled. Key **ENTER** to modify.

Flush Time is the time water flows after initiation of a Flush Cycle. This is a maintenance feature and can be manually initiated by (1) placing the controller door System Start Switch in the OFF position for more than 2 seconds or (2) by opening the remote start contact for longer than 2 seconds or (3) by using the keypad menu. Key **ENTER** to modify time.

Wait for Flow may be adjusted to any time from 1 to 30 seconds.
Press **ENTER** to adjust.

Diagnostics displays the input current loop power voltage.
Press **ENTER** to view diagnostic data set.
Refer to 4.2 for detail.

Interlock (CI) could be set to NO/NC using **→** key

Feed Verify ON/OFF could be set to ON using **→** for pulse feedback from Metering pump (metering pump must have pulse (dry contact output)

Feed Verify may be adjusted to any time from 1 to 300 seconds.
Press **ENTER** to adjust

View Timing

Polymer 38.6%	←
Auto RUN	↕
←	
Fill Time	←
30 Seconds	↓
↓ ↑ or ←	
Flush Time	←
60 Seconds	↓
↓ ↑ or ←	
Wait for Flow	←
5 Seconds	↓
↓ ↑ or ←	
Diagnostics	←
23.9 VDC	↓
↓ ↑ or ←	
Interlock OFF	←
Invert = →	↕
↓ ↑ or ←	
Feed Verify OFF	←
switch = →	↓
↓ ↑ or ←	
Feed Verify	←
30 second	

ProMinent ProMix 'S & C' Polymer Feeder

Sidebar:

Wait for Flow: Water inlet solenoid open, ON. Mixer and Polymer Pump both OFF.
Factory default = 5 seconds.

The 4-20mA current loop control input may be powered by the site control system or by the ProMix S 24VDC power supply.

ProMinent ProMix 'S & C' Polymer Feeder

Press **ENTER** @ **Polymer**
to view or adjust the **Fill Time**, **Flush time**
or **Wait for Flow** time.

All three times are adjusted in the same way.
In this example we'll press **ENTER** @ **Fill Time**.

Key **RIGHT** to move the cursor &
UP or **DOWN** to change the digit.
Key **EXIT** to abandon or **ENTER** to execute.

Displays new, adjusted **Fill Time**.
Press **EXIT** to return to main menu.

If you **ENTER** a time less than 1 second,
the **Fill Time** will be set to 1 second.

If you **ENTER** a time greater than 60 seconds,
the **Fill Time** will be set to 60 seconds.

Adjust Timing

Polymer 38.7% ↵
Auto RUN ↓



Fill Time ↵
30 Seconds ↓



Edit & ENTER ↵
45 Seconds →



Fill Time ↵
45 Seconds ↓

Low Limit response

Fill Time ↵
1 Seconds ↓

High Limit response

Fill Time ↵
60 Seconds ↓

Sidebar:

Fill Time: Minimum = 1 second, Maximum = 60 seconds.
Factory default = 30 seconds.

Flush Time: Minimum = 1 second, Maximum = 300
seconds.
Factory default = 60 seconds.

Wait for Flow: Minimum = 1 second, Maximum = 30
seconds.
Factory default = 5 seconds.

ProMinent ProMix 'S & C' Polymer Feeder

2.5 Manually Flush Mixer

Press **ENTER** @ **Mixer**
When the **Mixer ON** time display is alternating
with the **Flush on ENTER** display.

The polymer feed pump will turn OFF.
The Mixer & water inlet solenoid will remain ON while the
alternating **Mixer** display counts down the flush period.

At the end of the Flush period the ProMix S will
return to the Auto RUN or Manual RUN state
unless the user:

1. Sets the Auto-Manual-OFF switch to OFF.
2. Shuts off the feeder inlet water.
3. Opens the Remote Start contacts.

Flush Mixer

Mixer
ON 49.1 Mins ↕

Alternates every second

Mixer ↩
Flush on ENTER ↕



Mixer
ON 50.8 Mins ↕

Alternates every second

Mixer ↩
Flush 26sec ↕

Sidebar:

Flush Time: Minimum = 1 second, Maximum = 300 seconds.
Factory default = 60 seconds

2.6 Automatic Flush Mixer

In Local Mode

After setting the System start selector switch to OFF position the unit will go through Automatic flush cycle and will stop after defined flush Time, the system will run again if the selector switch is back to ON position

In Remote Mode

After opening the remote contact the unit will go through Automatic flush cycle and will stop after defined flush Time, the system will run again if the remote contact is closed

ProMinent ProMix 'S & C' Polymer Feeder

2.7 Status Message Summary

LCD Displays	Feeder State
Offline STOP	Feeder powered. On-Off-Remote switch at Off.
Lin<4mA, Fault	On-Off-Remote switch at Auto and 4-20mA input less than 4 mA. Exits on 4-20mA \geq 4 mA or On-Off-Remote= Off or Manual
Flow Check	Waits user set seconds for Flow switch contact set closed after Filling Mixer. Exits on flow switch closed or On-Off-Remote= Off
No Water STOP	Exits on flow switch closed or On-Off-Remote= Off
Filling Mixer	Inlet Solenoid ON & Mixer OFF. Waits user set seconds to fill mixer. Exits on On-Off-Remote= Off
No Ext.Run STOP	Polymer Pump, Mixer and Solenoid OFF Exits on Remote Start contacts closed or On-Off-Remote = Off
Flushing Mixer	Solenoid & Mixer ON. Polymer pump OFF. Exits on flush time expired or No flow or On-Off-Remote = Off
Flush Fail STOP	No Flow measured while flushing. Exits on flush time expired or flow measured or On-Off-Remote = Off
Remote RUN	Polymer pump @ 4-20mA input controlled setpoint. Exits on no flow, control<0%, flush, Remote Start open, or On-Off-Remote = Off or Manual.
Local RUN	Polymer pump @ user setpoint. Exits on no flow, flush, Remote Start open or On-Off-Remote = Auto or Off.
Flushed, Stopped Press the ENTER key to Run	Flush ends. Polymer Pump, Mixer and Solenoid OFF Any key press restarts.

Sidebar:

Flow Check: The flow switch monitors dilution water flow into the mixer chamber.

Filling Mixer: The mixer chamber is filled once after every power ON cycle.
If you drain the mixer, switch the power OFF then ON to re-fill the mixer chamber.

2.8 Calibrate 4-20mA Input

Press **ENTER** @ **4-20 mA Input**
to calibrate the 4-20mA current loop input
from the site's control system

4-20 mA Input may be calibrated at any time
in Auto or Manual mode.



The present **4-20 mA Input** is **38.7%**.
Press **ENTER** to calibrate.

Key **RIGHT** to move the cursor &
UP or **DOWN** to change the digit.
Key **EXIT** to abandon or **ENTER** to execute.

Displays new, adjusted **Remote Setpoint**.
Press **EXIT** to return to main menu.

If the Local-Remote switch is in the Remote position,
any adjustment takes effect immediately and modifies
the 4-20mA output to the polymer pump.

Calibrate 4-20mA In

Remote Setpoint 
38% 10.1mA 



Calibrate Iin 
38.7%





Edit & ENTER
36.9%  



then



Calibrate Iin 
36.9% 

Sidebar:

'**Calibrate lin**' matches the % display on the polymer feeder with the remote operator's % display.

The underlying 4-20mA level is of less importance than having both of the % displays (the feeder's & the remote operator's) match because the Polymer feed pump operates from OFF at 0% to maximum ON at 100%.

It's simpler to calibrate on a % instead of calibrating on a current and making a non-intuitive 4-20mA loop to 0-100% conversion.

So you don't need to know that a 32.4% feed corresponds to a current loop @ 9.18 mA.

The factory default scales the 4-20 mA input for 4mA = 0% Pump to 20 mA = 100% Pump. See Section 2.2 if your site's 4-20 mA input is not scaled 4-20 mA = 0 to 100%

2.9 Scale the 4-20mA Input

Press **ENTER** @ **4-20 mA Input**
to navigate the input current loop sub-menu

See the previous page for calibrating the 4-20 mA input loop

Press **DOWN** to view the present 4 mA pump feed
percentage.

The factory default is as displayed. When the 4-20 mA input
is at 4.0 mA the pump will be OFF.

Press **DOWN** to view the present 20 mA pump feed
percentage.

The factory default is as displayed. When the 4-20 mA input
is at 20.0 mA the pump will be 100%.

Press **DOWN** to view the response when the input current
loop is less than 4.0 mA.

The factory default is as displayed. When the 4-20 mA input
is less than 4.0 mA the pump will be OFF.

Press **ENTER** at any of the four sub-menu displays to
modify the present setting.
Press **EXIT** to leave unchanged.

4-20mA input sub Menu

4-20mA Input ←
38% 10.1mA ↕



Calibrate Iin ←
38.7% ↓



Scale Iin @4mA ←
4.0mA = 0% ↓



Scale Iin @20mA ←
20.0mA = 100% ↓



Iin Fail State ←
Pump OFF ↓

Sidebar:

Calibration of the 4-20 mA input ensures that the measured value of the 4-20 mA Input is displayed as the correct mA level.

Scaling the 4-20 mA input is required when you do not want 4-20 mA to correspond to a 0-100% polymer feed rate.

Selecting a different response than Pump OFF on loss of the 4-20 mA input allows for a wider range of site operational configurations & control loop reliability.

2.9 Scale the 4-20mA Input (continued)

Press **ENTER** @ **4-20mA Input**
to calibrate the 4-20mA current loop input
from the site's control system.

Press **UP** or **DOWN** to the **Scale lin @20mA** display
& then press **ENTER**.

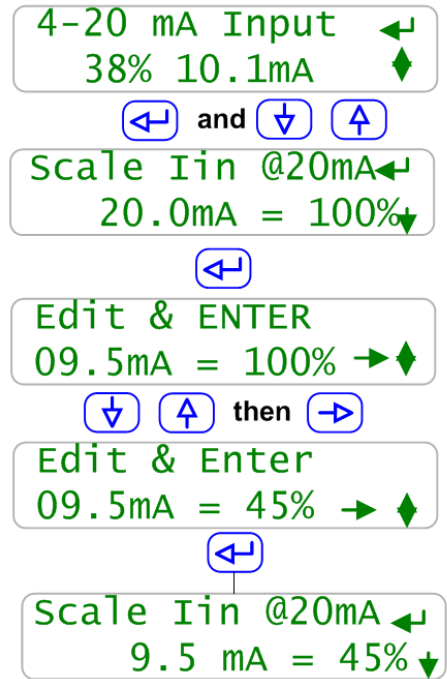
Press **RIGHT** to move the underline cursor &
UP or **DOWN** to modify the value @ the cursor.
Press **EXIT** to leave the present setting unchanged.

You can modify either or both of the mA level and the
resulting pump feed %.
Press **ENTER** when finished editing.

Displays new, adjusted **Scale lin @20mA**
Press **EXIT** to return to main menu.

Scale lin @4mA is modified in the same way.

Modify mA @ 100% ON



Edit either or both mA & %

Sidebar:

There's a lot of flexibility in the 4-20 mA input scaling & the corresponding pump speed but most users will leave 4mA=0% and adjust the mA @ 100% to allow 0-100% pump operation over a narrower range of 4-20 mA input.

For example, if you wish 0-15% of the 4-20 mA input to control the pump from 0-100%
Edit **Scale lin @20mA** for **6.4mA = 100%**
& leave **Scale lin @ 4 mA** unchanged at **4.0mA = 0%**

Setting the mA level below 4.0mA will set the mA level to 4.0mA
Setting the mA level above 21.0mA will set the mA level to 21mA

Setting the % above 100% will set the % to 100%. The % level cannot be set below 0%.
Refer to Appendix B for notes on 4-20mA Input scaling.

If you set % span to zero in error, the pump will turn OFF.
Note that you could make the current loop response reverse acting so that an increasing loop current will cause a decreasing pump %.

ProMinent ProMix 'S & C' Polymer Feeder

2.10 Response on Loss of 4-20 mA Input

Press **ENTER** at 4-20mA input.

Press **UP** or **DOWN** to **Iin Fail State**.

Displays the factory default.
Pump OFF when **4-20mA Input** less than 4mA.
Press **ENTER** to select a different response.

Press **DOWN** to select a user set pump speed on less than 4 mA.

Displays the factory default of 10%.
Press **ENTER** to select response & modify value.

Press **DOWN and ENTER** to run the pump at the last input Value greater than 4.0mA when the measured current loop value falls below 4.0mA.

If you pressed **ENTER** @ **Pump @ 10%**
You will be able to modify the **10%** value.

Press **RIGHT** to move the underline cursor & **UP** or **DOWN** to modify the value at the cursor.

Press **EXIT** to leave unchanged or **ENTER**
To set the new value.

View-Modify response
On 4-20mA Input fail

4-20mA Input
38% 10.1mA

← and ↕

Iin Fail State
Pump OFF

←

Pump OFF
Pump @ 10%

↓ ↑

Pump @ 10%
Last good Iin

↓ ↑

Last good Iin
Pump OFF

ENTER @ Pump @ 10%

←

Edit & ENTER
Pump @ 26%

↓ ↑ then →

Iin Fail State
Pump @ 26%

Sidebar:

The feeder defines a failed 4-20mA input @ -1% which is nominally 3.85mA.
(4.0mA – 0.01 x 16.0mA = 3.84mA)

3.85mA allows 4.0mA, a valid pump control signal some headroom prior to a fault response

2.11 Calibrate 4-20mA Output

Press **ENTER** & **DOWN** @ **Polymer Pump**
to calibrate the 4-20mA current loop output
that controls the pump feed rate

The present **Polymer Pump** control is 38.0%
But the on-pump display is @ 39.5%
Press **ENTER** to calibrate.

Key **RIGHT** to move the cursor &
UP or **DOWN** to change the digit.
Key **EXIT** to abandon or **ENTER** to execute.

The ProMix S reduces the pump 4-20mA current
So that the on-pump display will measure 38.0%.
Press **EXIT** to return to main menu.

Any adjustment takes effect immediately and modifies both
the 4-20mA output.

Calibrate 4-20mA Out

Polymer PUMP ↵
ON 38% 10.1mA ⬆

↵ and ⬇

Calibrate Iout ↵
38.0% ⬆

↵

Edit & ENTER ↵
39.5% → ⬆

⬇ ⬆ then →

Calibrate Iout ↵
38.0% ⬇

Sidebar:

'Calibrate Iout' matches the % display on the polymer feeder with the
polymer feed pump's % display (not all pump types display %, some display mA)

Note: 50% will not display 12mA after calibration. It will display the mA required for the pump
to display 50% which could be 11mA to 13mA Refer to 4.3 for 4-20mA reset.

Correction >10% blocked, displays "**Advice >10% Adj.Error**". Press **EXIT** to clear.

Modifying Zero, <4%

At less than 4% the 4-20mA zero is modified to correct loop offset.

Example: Pump shows 0% and the ProMix S displays 1.5%.

Modifying Span, >6%

At more than 6% the 4-20mA span is modified to correct loop gain.

Example: Pump shows 52% and the ProMix S displays 50%

2.12 Operation Configuration

Set points

Control of the neat polymer feed pump is set by the **System Start** and **Polymer Pump** switches located on the ProMix control panel door. The type of polymer, either **emulsion** or **Mannich**, and the operation, either **Local** or **Remote**, are selected via the controller keypad or browser interface. Refer to the ProMix Mode and Polymer charts in section 1.6.

NOTE: In Batch mode the ProMix feeder adjusts the pump speed as the measured Primary & Post dilution flow rates vary to maintain the setpoint polymer concentration.

Feed Verification

Feed verification ensures that the polymer pump is actually delivering polymer by monitoring the output of the pump. Sometimes a thermal flow switch is employed for this purpose as an optional feature for 'other' type pumps selection. The Gamma XL pump utilizes an integral relay for feed verification. See section 2.13 for further details.

Pump Calibration

Before placing the ProMix system in operation the polymer pump should be calibrated at maximum dosing and the resultant gph rate entered into the configuration menu for pump size. A calibration cylinder is provided on most ProMix systems to assist in the calibration of the polymer pump. The following procedure should be followed to calibrate a Gamma XL type pump, assuming all installation requirements are met:

1. Configure pump for manual operation, set desired suction viscosity spm, and set stroke length to 100%.
2. Fill calibration cylinder to top mark by manipulating valves & pump to allow neat polymer into the cylinder. Manually fill the calibration cylinder if it is not possible to use the pump output.
3. Keep ProMix feeder connected to the actual system so that maximum application back pressure is realized.
4. Open primary dilution water valve so that the mix chamber fills when system is started.
5. Manipulate pump valves so that pump suction is connected to the calibration cylinder only.
6. Manually run pump at maximum rated strokes per minute and time the calibration column drawdown for at least 30 seconds taking note of beginning and end marks. Calculate the gph pump rate from the volume and time.
7. Using the controller keypad, enter the calculated pump rate in gph
8. Place the pump back into the analog mode.

2.13 Feed Verification

Press **ENTER** and **DOWN** @ **Polymer Pump** to navigate to the polymer pump feed verification option.

Feed Verify when switched **ON** is used to monitor the relay pulse output from the polymer feed pump verifying that the 4-20 mA signal from the controller is driving the pump. If this **Feed Verify** pulse signal is not active when the controller is sending the 4-20 mA control signal to the polymer pump then a pump failure alarm is actuated.

Feed Verify can also be turned **OFF** in the case where the polymer pump does not have the pulse feedback option. Press the **RIGHT** key to alternate between **ON** and **OFF** and press **ENTER** to modify. Press **EXIT** to return to main menu.

Press **ENTER** and **DOWN** @ **Polymer Pump** to navigate to the polymer pump feed verification option pulse timing interval.

Feed Verify is the time delay between pulse signals and may be adjusted to any time from 1 to 300 seconds. If a pulse is not received within this time period and **Feed Verify** is **ON** then a pump failure alarm is actuated. Press **ENTER** to modify and press the **RIGHT** key to change values.

Press **EXIT** to return to main menu

Verify on/off

Polymer 38.6%
Local RUN

←↵

↕

←↵ then ↕ ↵

Feed Verify OFF
switch = →

←↵

↓

←↵

Feed Verify ON
switch = →

←↵

↓

Verify time interval

Polymer 38.6%
Local RUN

←↵

↓

↕ ↵ or ←↵

Feed Verify
30 second

←↵

↓

Sidebar:

The **Feed Verify** pulse signal from the pump is wired to the **FV** terminals on the Digital Input accessory board.

ProMinent ProMix 'S & C' Polymer Feeder

2.15 4-20mA Controls

0% defaults to 4.0mA and zero SPM.

100% defaults to 20mA and the maximum pump SPM.

The 4-20mA input current may be changed by adjusting the 4-20mA input scaling.

2.16 Troubleshooting Guide

Adjustment and bypass fixes to operational problems.

LCD Display	Operational Problem
No Control STOP	Switch the On-Off-Remote to On while you figure out the problem with the 4-20mA current loop connected to mA In input terminals ' I+ ' & Ground \perp terminal. If the ProMix S mA In 24V is powering the loop, view Polymer / Diagnostic to ensure >23VDC
No Water STOP	Flowswitch OK? If a flowswitch – differential pressure switch problem, jumper controller Interlock input terminal ' FS ' to the adjacent Ground symbol terminal while you resolve. Solenoid OK? Verify that the solenoid has been actuated during the Filling Mixer and Flow Check states by cracking a downstream union. Verify 120 VAC between AC Power terminal ' S 'olenoid & Neutrals terminals during the Filling Mixer and Flow Check states. Fuse Fails? If no AC solenoid power, verify solenoid wiring & coil not shorted & replace the solenoid fuse. It's the brown 2.5A fuse in the white socket above the Neutrals terminals. www.digikey.com Part# 7500413 Note that power to the mixer motor start relay coil shares the 2.5A solenoid fuse.
No Ext.Run STOP	If a Remote Start contact set problem, jumper controller Interlock input terminal ' RC ' to the adjacent Ground symbol terminal.
Flush Fail STOP	This state occurs if flow lost during flushing. After flush time expires, goes to No Water STOP
Offline STOP	If the On-Off-Remote switch is not in the OFF position then there is either a loose connection @ the door mounted switch terminals or the red 3 wire connector below the keypad ribbon connector has been disconnected.

ProMinent ProMix 'S & C' Polymer Feeder

2.17 Diagnostic Display

Press **ENTER** & **UP** @ **Polymer**
for **Diagnostics**.

When initially programmed, the ProMix S serial
number 1st letter is set to '**U**'.
Manufacturing sets the 1st letter to '**P**'

Firmware Ver: is the software issue date.
In this example 4/06/10.

An increasing number of **Watchdog Resets** indicates that
the software is halting, typically as a result of an external
electrical fault. Disconnect the **Interlock RC** inputs first,
followed by the **mA In I+** & common inputs next.

If the feeder runs continuously or the **RC** input is used to
STOP the feeder, there should be a low number of **Power
OFF-ONS**. An unexplained, high number usually indicates
accidental shutdown or AC power wiring problems.

Relay ON/OFF display in the same order as wired and
labeled on the ProMix S circuit board.

Polymer enable, **R**unning, **W**ater Loss, **M**ixer, **S**olenoid.
P, R & W are dry NO contacts, **M & S** are NO hot, 120VAC.

This is the elapsed time on the **Polymer** enable contact set
& therefore tracks the time spent in the **Auto RUN** &
Manual RUN states. It's saved to flash every hour so if
powered OFF before an hour of ON time, ON time is lost.

This is the elapsed ProMix S AC powered time & meant to
be compared to the previous **Pump ON** time.
It's saved to flash every hour so if powered OFF before an
hour of ON time, ON time is lost.

The 4-20mA current input is locked to the 4-20mA current
output when Auto selected. Both can be calibrated &
occasionally mis-calibrated. Press **ENTER** to return to the
factory defaults & a known state.

Diagnostics

Diagnostics	23.9 VDC	↩
↩		
Serial Number	U310PF001	↩
↓ ↑		
Firmware Ver:	40610	↕
↓ ↑		
Watchdog Resets	0	↩
↓ ↑		
Power OFF-ONS	2	↕
↓ ↑		
P R W M S	ON ON - ON ON	↕
↓ ↑		
Pump ON	0Days, 2Hrs	↕
↓ ↑		
Powered	1Yrs 46Days, 14Hrs	↕
↓ ↑		
Reset Iin&Iout	ENTER resets	↩
↓ ↑		
Key Pressed	5 ms	↩
↓ ↑		

ProMinent ProMix 'S & C' Polymer Feeder

Key Pressed: the Debounce time for keypad and it is set to 10ms factory default, it is not adjustable

2.18 Blue White A-100NV Pump

Cabling 4-20mA Input

BLUE to **mA IN**, I+

BLACK to **mA IN**, Ground

Blue White 4-20mA has a 250 ohm loop resistance.

4mA is nominally 600mV & 12mA nominally 1750mV at ProMix S terminals. (Noted for users with mA measuring problems)

3.0 SPARE PARTS & PREVENTIVE MAINTENANCE

3.1 BLUE WHITE A-100NV Pump Spare Parts

<u>P/N</u>	<u>Description</u>
1079474	Tygothane Tube Assy (A1N00V-1T; A1N30V-1T)
1079475	Tygothane Tube Assy (A1N30V-2T)
1079476	Tygothane Tube Assy (A1N20V-3T)
7747083	Roller Assembly
7747084	Tube Nuts

3.2 GAMMA XL Pump Spare Parts

P/N: Description:

1033360 GXLA 1608 Spare Parts Kit**
1030353 GXLA 1608 Diaphragm
1017391 GXLA 1608 Dosing head

1027082 GXLA 1020 Spare Parts Kit**
1000249 GXLA 1020 Diaphragm
1017393 GXLA 1020 Dosing head

1027083 GXLA 0730 Spare Parts Kit**
1000250 GXLA 0730 Diaphragm
1017404 GXLA 0730 Dosing head

**Spare Parts Kit above includes the following:

- (1) Diaphragm
- (1) Suction Valve Set
- (1) Discharge Valve Set
- (2) Ball Valves (Check)
- (1) Set of O-rings
- (1) Connector Set

ProMinent ProMix 'S & C' Polymer Feeder

3.3 PVC Mixing Chamber Spare Parts

<u>P/N:</u>	<u>Description:</u>
7746474	Seal, Mech, Shaft, 1/2", ProMix-U
7747244	Injection Valve, SG ProMix
7747241	O-Ring, Chamber Insert, Viton, ProMix-U
7746516	O-Ring, Chamber, Viton, ProMix-S

3.4 Piping Components Spare Parts

<u>P/N:</u>	<u>Description:</u>
7741084	0-100PSI, Gauge, SS, 2-1/2, Bottom MTD
7741089	0-60PSI, Gauge, SS, 2-1/2, Bottom MTD
7741514	3/8" OD Natural PE Tubing

3.5 Control Panel Spare Parts

<u>P/N:</u>	<u>Description:</u>
1078793	SQD Motor Circuit Protector 6-10 Amp Adjustable
1078795	SQD Contactor
1077610	ABB Circuit Breaker 15 Amp
1077609	ABB Circuit Breaker 10 Amp
7500413	Littlefuse 2.5A 250V for Circuit Board

3.6 Maintenance and Lubrication Schedule

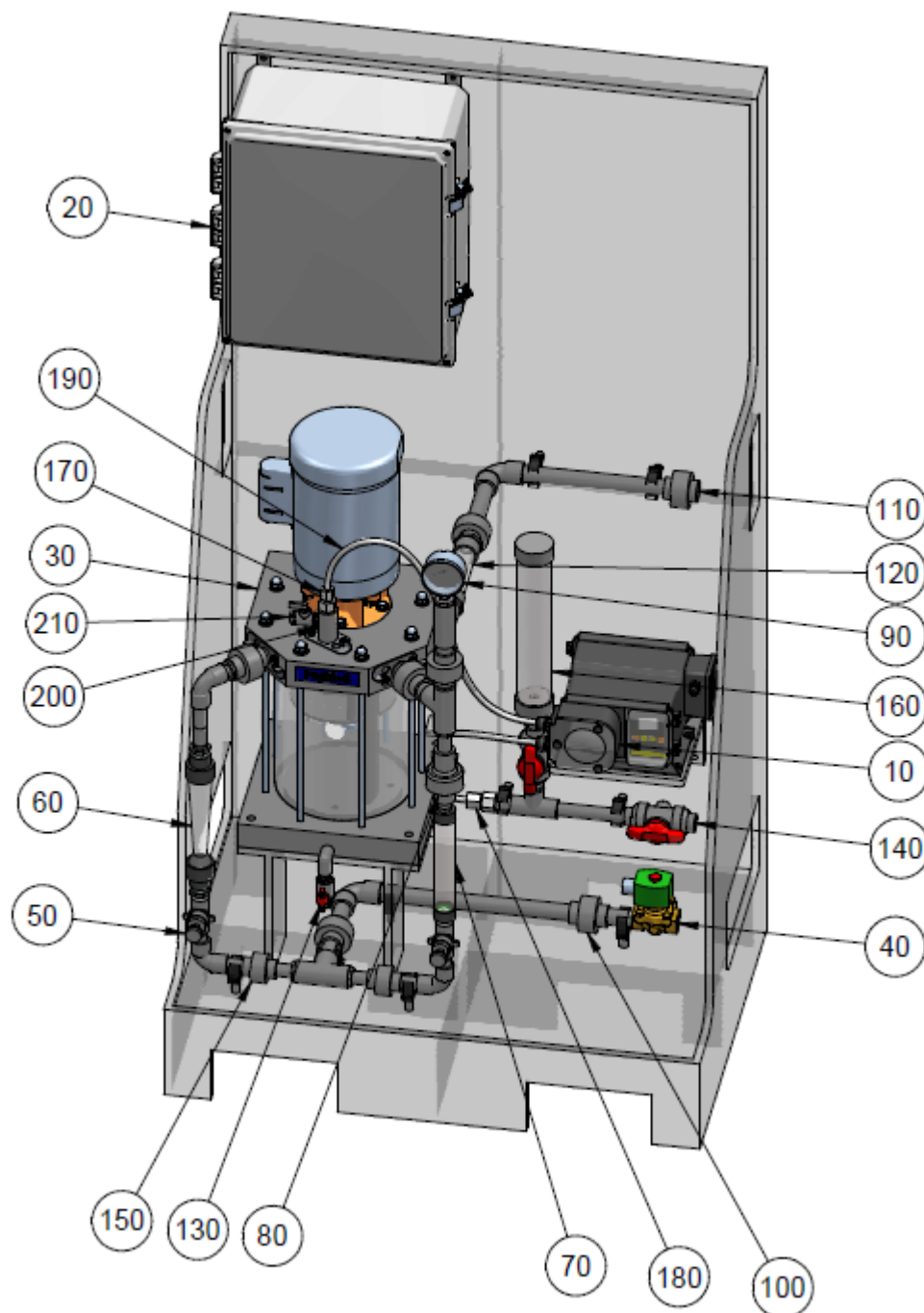
MAINTENANCE		
Description / Task	Remarks	Frequency
Visual inspection of unit		Weekly
Check dosing line fittings and valves for tightness		Every 3 Months (Approx 30% continuous operation.)
Verify equipment is operating properly	No leaks in the piping or at the "weep hole" or abnormal noises	Weekly
Check the electrical connections for integrity		Quarterly
Check process tubing for wear or cuts		Weekly
Check Mixing Chamber Motor amperage. Check fan cover for obstruction or Dirt		Monthly
Check pump tubing for wear or cuts		Weekly
Short Term - Flushing of Piping & Chamber	24 Hour Shut Down	Run 60 Second Flush
Long Term – Flushing of Piping & Chamber	24 Hour + or if large amount of polymer is dosed into chamber w/o water running	Run Water until piping is visibly clear in static mixer

LUBRICATION		
Description / Task	Lubrication	Frequency
Mixing Chamber Motor 1/2 Hp - Standard Bearings	Ball Bearing Grease	5,000 Hours of Service per Year or every three years

Appendix A - TA Series Bill of Material

Mechanical & Electrical List

General Mechanical Layout – ProMix S TA



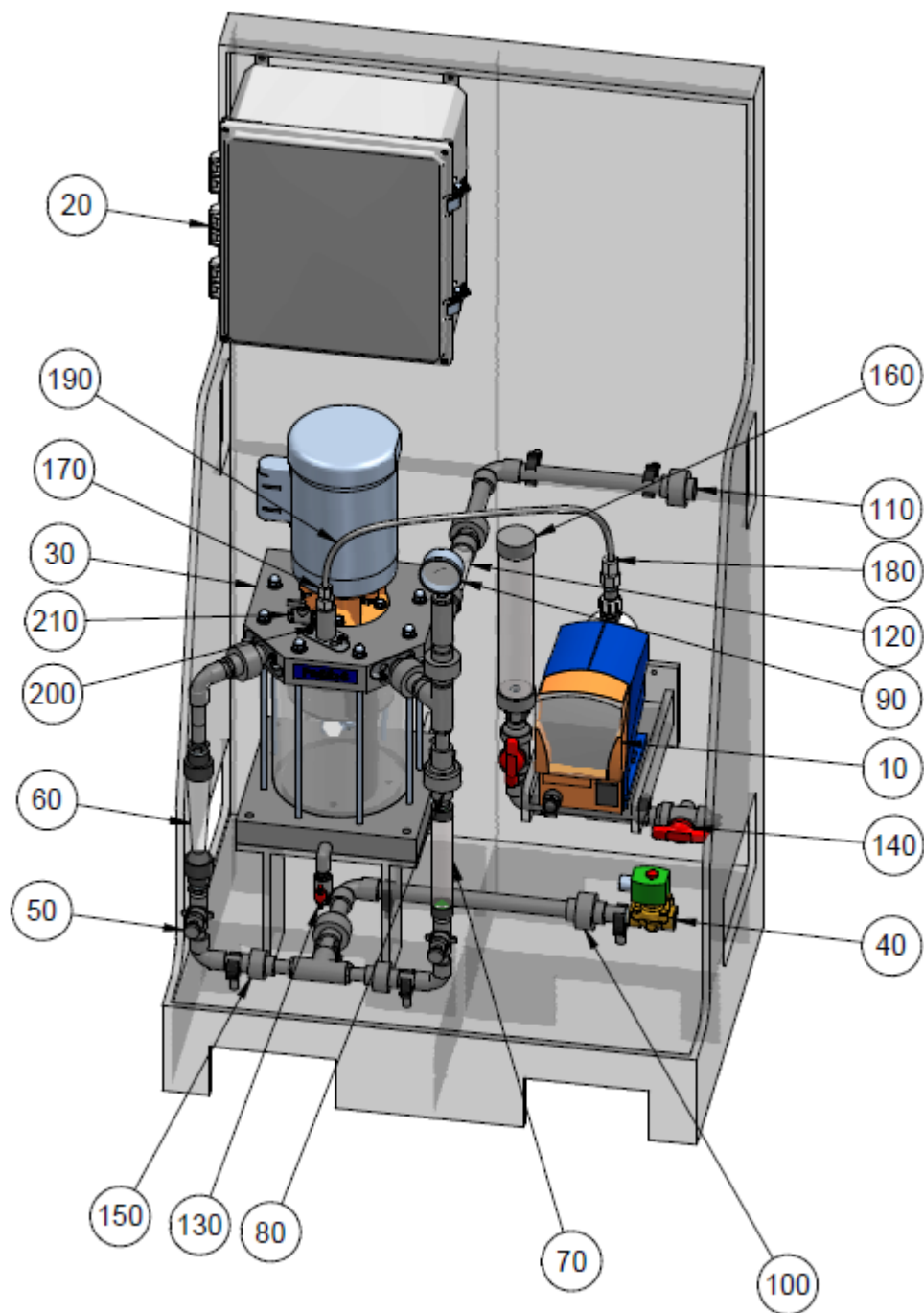
ProMix S TA with Peristaltic Tubing Pump

PROMIX S (TA SERIES) BILL OF MATERIAL

			1048346	1048347	1048348	1048349	1048351	1048352
ITEM	PART DESCRIPTION	PART NO						
10	PUMP, 3/8" OD, 0.24 GPH, BLUE-WHITE A1N00V-1T	7747012	X					
	PUMP, 3/8" OD, 1.06 GPH, BLUE-WHITE A1N30V-1T	7747013		X	X			
	PUMP, 3/8" OD, 2.22 GPH, BLUE-WHITE A1N30V-2T	7747014				X	X	
	PUMP, 3/8" OD, 4.14 GPH, BLUE-WHITE A1N30V-3T	7747015						X
20	CONTROL PANEL	7747279	X	X	X	X	X	X
30	PROMIX S MIXING CHAMBER	7747255	X	X	X	X	X	X
40	SOLENOID VALVE, 3/4", FNPT, BRASS	7746305	X	X	X	X	X	X
50	NEEDLE VALVE, 1/2", FNPT, PVC	7746303	X	X	X	X	X	X
60	FLOW METER, 1 GPM, 1/2", FNPT, PVC, W\SWITCH	7746672	X	X				
	FLOW METER, 3 GPM, 1/2", FNPT, PVC, W\SWITCH	7746673			X	X		
	FLOW METER, 5 GPM, 3/4", FNPT, PVC, W\SWITCH	7746674					X	X
70	FLOW METER, 1 GPM, 1/2", FNPT, PVC	7746342		X				
	FLOW METER, 2 GPM, 1/2", FNPT, PVC	7746304			X	X		
	FLOW METER, 5 GPM, 1/2", FNPT, PVC	7746343					X	X
80	CHECK VALVE, 1/2", SKT, PVC	1048404	X	X	X	X	X	X
90	PRESSURE GAUGE, 316 SST, 0 – 100 PSI	7741084	X	X	X	X	X	X
100	UNION, 3/4", SOCKET, PVC/VITON, SCH. 80	7744555	X	X	X	X	X	X
110	UNION, 3/4", FNPT, PVC/VITON, SCH. 80	7744556	X	X	X	X	X	X
120	STATIC MIXER, 3/4", MNPT, CLEAR PVC, SCH. 40, 6 ELE	7746301	X	X	X	X	X	X
130	LAB COCK, 1/4", FNPT, PVC/VITON	7746331	X	X	X	X	X	X
140	BALL VALVE, 1/2", PVC/VITON, SCH. 80	7000309	X	X	X	X	X	X
150	UNION, 1/2", SOCKET, PVC/VITON, SCH. 80	7744562	X	X	X	X	X	X
160	CALIBRATION COLUMN, PVC, 250 ML	7500138	X	X	X	X		
	CALIBRATION COLUMN, PVC, 500 ML	7500139					X	X
170	MALE CONNECTOR, 3/8" O.D. TUBING X 1/2" MNPT, PVDF	7744813	X	X	X	X	X	X
180	FEMALE CONNECTOR, 3/8" O.D. TUBE X 1/2" FNPT, PVDF	7800709	X	X	X	X	X	X
190	TUBING, 3/8" OD, HDPE	7741514	X	X	X	X	X	X
200	INJECTION VALVE	7747244	X	X	X	X	X	X
210	BLEED VALVE, 1/8", PVC/VITON	7747237	X	X	X	X	X	X

ProMinent ProMix 'S & C' Polymer Feeder

General Mechanical Layout – ProMix S DA



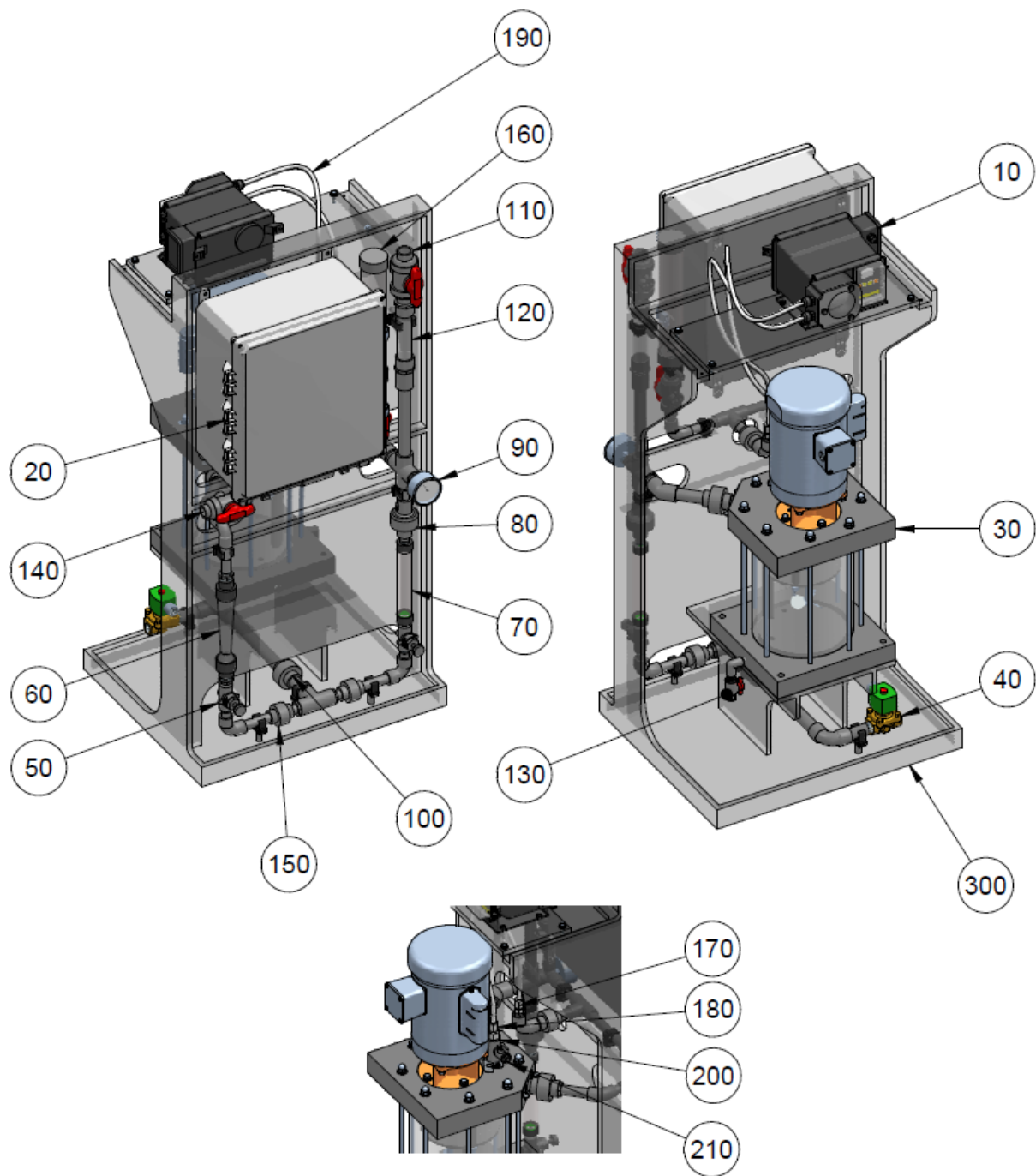
ProMix S DA with Diaphragm Pump

PROMIX S (DA SERIES) BILL OF MATERIAL

			1048353	1048354	1048355	1048356	1048357	1048358
ITEM	PART DESCRIPTION	PART NO						
10	GAMMA XL 1608 SERIES PUMP	GLXAUS1608PVT4V000UV4030EN	X	X	X			
	GAMMA XL 1020 SERIES PUMP	GLXAUS1020PVT4V000UV4030EN				X	X	
	GAMMA XL 0730 SERIES PUMP	GLXAUS0730PVT4V000UV4030EN						X
20	CONTROL PANEL	7747280	X	X	X	X	X	X
30	PROMIX S MIXING CHAMBER	7747255	X	X	X	X	X	X
40	SOLENOID VALVE, 3/4", FNPT, BRASS	7746305	X	X	X	X	X	X
50	NEEDLE VALVE, 1/2", FNPT, PVC	7746303	X	X	X	X	X	X
60	FLOW METER, 1 GPM, 1/2", FNPT, PVC, WSWITCH	7746672	X	X				
	FLOW METER, 3 GPM, 1/2", FNPT, PVC, WSWITCH	7746673			X	X		
	FLOW METER, 5 GPM, 3/4", FNPT, PVC, WSWITCH	7746674					X	X
70	FLOW METER, 1 GPM, 1/2", FNPT, PVC	7746342		X				
	FLOW METER, 2 GPM, 1/2", FNPT, PVC	7746304			X	X		
	FLOW METER, 5 GPM, 1/2", FNPT, PVC	7746343					X	X
80	CHECK VALVE, 1/2", SKT, PVC	1048404	X	X	X	X	X	X
90	PRESSURE GAUGE, 316 SST, 0 – 100 PSI	7741084	X	X	X			
	PRESSURE GAUGE, 316 SST, 0 – 160 PSI	7745788	X	X	X	X	X	X
100	UNION, 3/4", SOCKET, PVC/VITON, SCH. 80	7744555	X	X	X	X	X	X
110	UNION, 3/4", FNPT, PVC/VITON, SCH. 80	7744556	X	X	X	X	X	X
120	STATIC MIXER, 3/4", MNPT, CLEAR PVC, SCH. 40, 6 ELE	7746301	X	X	X	X	X	X
130	LAB COCK, 1/4", FNPT, PVC/VITON	7746331	X	X	X	X	X	X
140	BALL VALVE, 1/2", PVC/VITON, SCH. 80	7000309	X	X	X	X	X	X
150	UNION, 1/2", SOCKET, PVC/VITON, SCH. 80	7744562	X	X	X	X	X	X
160	CALIBRATION COLUMN, PVC, 250 ML	7500138	X	X	X	X		
	CALIBRATION COLUMN, PVC, 500 ML	7500139					X	X
170	MALE CONNECTOR, 3/8" O.D. TUBING X 1/2" MNPT, PVDF	7744813	X	X	X	X	X	X
180	FEMALE CONNECTOR, 3/8" O.D. TUBE X 1/2" FNPT, PVDF	7800709	X	X	X	X	X	X
190	TUBING, 3/8" OD, HDPE	7741514	X	X	X	X	X	X
200	INJECTION VALVE	7747244	X	X	X	X	X	X
210	BLEED VALVE, 1/8", PVC/VITON	7747237	X	X	X	X	X	X

ProMinent ProMix 'S & C' Polymer Feeder

General Mechanical Layout – ProMix C TA



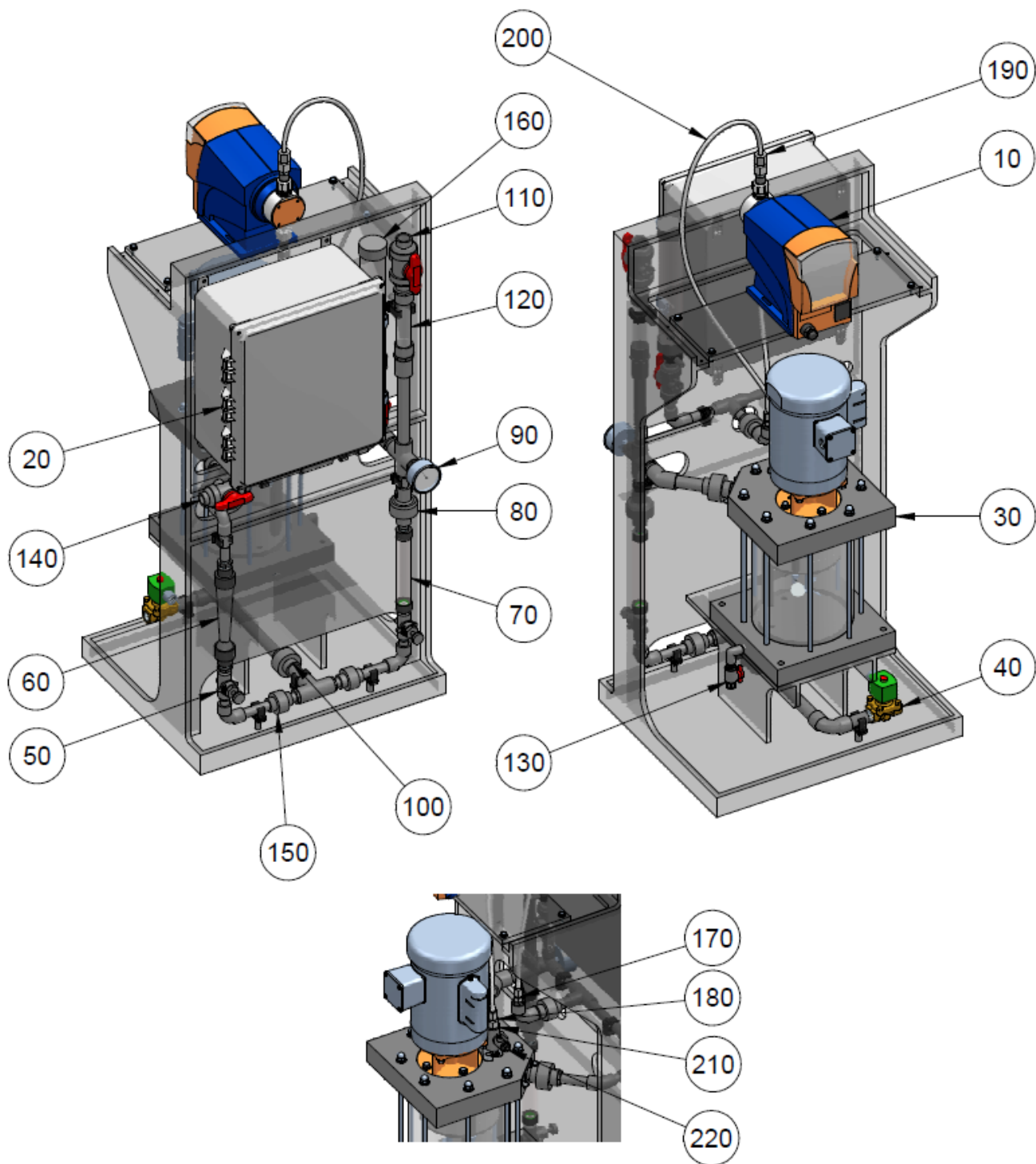
PROMIX C CONTROL A

PROMIX C (TA SERIES) BILL OF MATERIAL

			1048360	1048361	1048362	1048363	1048364	1048365
ITEM	PART DESCRIPTION	PART NO						
10	PUMP, 3/8" OD, 0.24 GPH, BLUE-WHITE A1N00V-1T	7747012	X					
	PUMP, 3/8" OD, 1.06 GPH, BLUE-WHITE A1N30V-1T	7747013		X	X			
	PUMP, 3/8" OD, 2.22 GPH, BLUE-WHITE A1N30V-2T	7747014				X	X	
	PUMP, 3/8" OD, 4.14 GPH, BLUE-WHITE A1N30V-3T	7747015						X
20	CONTROL PANEL	7747279	X	X	X	X	X	X
30	PROMIX S MIXING CHAMBER	7747255	X	X	X	X	X	X
40	SOLENOID VALVE, 3/4", FNPT, BRASS	7746305	X	X	X	X	X	X
50	NEEDLE VALVE, 1/2", FNPT, PVC	7746303	X	X	X	X	X	X
60	FLOW METER, 1 GPM, 1/2", FNPT, PVC, W/SWITCH	7746672	X	X				
	FLOW METER, 3 GPM, 1/2", FNPT, PVC, W/SWITCH	7746673			X	X		
	FLOW METER, 5 GPM, 3/4", FNPT, PVC, W/SWITCH	7746674					X	X
70	FLOW METER, 1 GPM, 1/2", FNPT, PVC	7746342		X				
	FLOW METER, 2 GPM, 1/2", FNPT, PVC	7746304			X	X		
	FLOW METER, 5 GPM, 1/2", FNPT, PVC	7746343					X	X
80	CHECK VALVE, 1/2", SKT, PVC	1048404	X	X	X	X	X	X
90	PRESSURE GAUGE, 316 SST, 0 – 60 PSI	7746129	X	X	X	X	X	X
100	UNION, 3/4", SOCKET, PVC/VITON, SCH. 80	7744555	X	X	X	X	X	X
110	BALL VALVE, 3/4", PVC/VITON, SCH. 80	7741668	X	X	X	X	X	X
120	STATIC MIXER, 3/4", MNPT, CLEAR PVC, SCH. 40, 6 ELE	7746301	X	X	X	X	X	X
130	LAB COCK, 1/4", FNPT, PVC/VITON	7746331	X	X	X	X	X	X
140	BALL VALVE, 1/2", PVC/VITON, SCH. 80	7000309	X	X	X	X	X	X
150	UNION, 1/2", SOCKET, PVC/VITON, SCH. 80	7744562	X	X	X	X	X	X
160	CALIBRATION COLUMN, PVC, 250 ML	7500138	X	X	X	X		
	CALIBRATION COLUMN, PVC, 500 ML	7500139					X	X
170	MALE CONNECTOR, 3/8" O.D. TUBING X 1/4" MNPT, PVDF	7744577	X	X	X	X	X	X
180	MALE CONNECTOR, 3/8" O.D. TUBE X 1/2" MNPT, PVDF	7744813	X	X	X	X	X	X
190	TUBING, 3/8" OD, HDPE	7741514	X	X	X	X	X	X
200	INJECTION VALVE	7747244	X	X	X	X	X	X
210	BLEED VALVE, 1/8", PVC/VITON	7747237	X	X	X	X	X	X

ProMinent ProMix 'S & C' Polymer Feeder

General Mechanical Layout – ProMix C DA

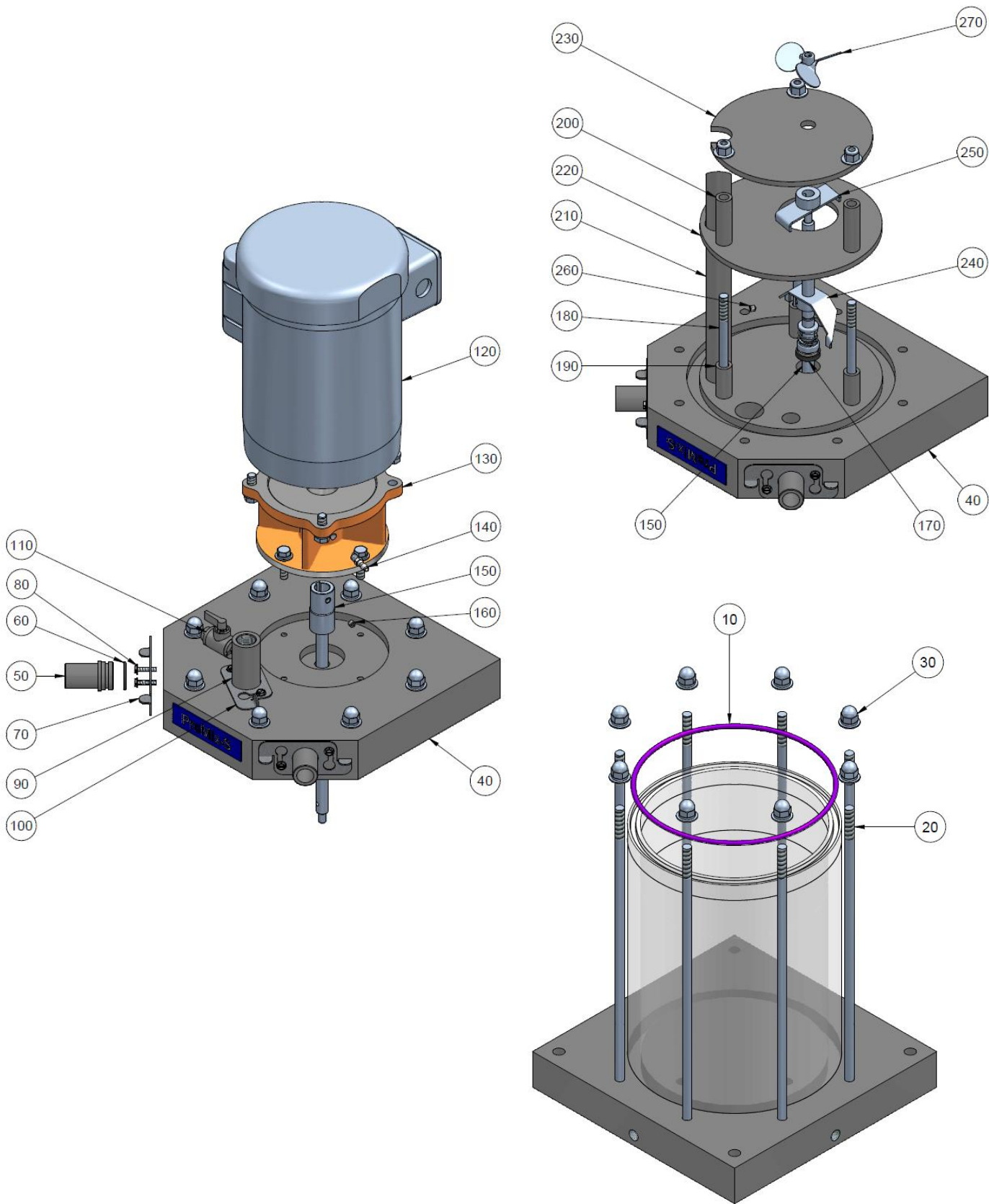


PROMIX C (TA SERIES) BILL OF MATERIAL

			1048353	1048354	1048355	1048356	1048357	1048358
ITEM	PART DESCRIPTION	PART NO						
10	GAMMA XL 1608 SERIES PUMP	GLXAUS1608PVT4V000UV4030EN	X	X	X			
	GAMMA XL 1020 SERIES PUMP	GLXAUS1020PVT4V000UV4030EN				X	X	
	GAMMA XL 0730 SERIES PUMP	GLXAUS0730PVT4V000UV4030EN						X
20	CONTROL PANEL	7747280	X	X	X	X	X	X
30	PROMIX S MIXING CHAMBER	7747255	X	X	X	X	X	X
40	SOLENOID VALVE, 3/4", FNPT, BRASS	7746305	X	X	X	X	X	X
50	NEEDLE VALVE, 1/2", FNPT, PVC	7746303	X	X	X	X	X	X
60	FLOW METER, 1 GPM, 1/2", FNPT, PVC, W\SWITCH	7746672	X	X				
	FLOW METER, 3 GPM, 1/2", FNPT, PVC, W\SWITCH	7746673			X	X		
	FLOW METER, 5 GPM, 3/4", FNPT, PVC, W\SWITCH	7746674					X	X
70	FLOW METER, 1 GPM, 1/2", FNPT, PVC	7746342		X				
	FLOW METER, 2 GPM, 1/2", FNPT, PVC	7746304			X	X		
	FLOW METER, 5 GPM, 1/2", FNPT, PVC	7746343					X	X
80	CHECK VALVE, 1/2", SKT, PVC	1048404	X	X	X	X	X	X
90	PRESSURE GAUGE, 316 SST, 0 – 100 PSI	7746130				X	X	X
	PRESSURE GAUGE, 316 SST, 0 – 160 PSI	7746131	X	X	X			
100	UNION, 3/4", SOCKET, PVC/VITON, SCH. 80	7744555	X	X	X	X	X	X
110	BALL VALVE, 3/4", PVC/VITON, SCH. 80	7741668	X	X	X	X	X	X
120	STATIC MIXER, 3/4", MNPT, CLEAR PVC, SCH. 40, 6 ELE	7746301	X	X	X	X	X	X
130	LAB COCK, 1/4", FNPT, PVC/VITON	7746331	X	X	X	X	X	X
140	BALL VALVE, 1/2", PVC/VITON, SCH. 80	7000309	X	X	X	X	X	X
150	UNION, 1/2", SOCKET, PVC/VITON, SCH. 80	7744562	X	X	X	X	X	X
160	CALIBRATION COLUMN, PVC, 250 ML	7500138	X	X	X	X		
	CALIBRATION COLUMN, PVC, 500 ML	7500139					X	X
170	MALE CONNECTOR, 3/8" O.D. TUBING X 1/4" MNPT, PVDF	7744577	X	X	X	X	X	X
180	MALE CONNECTOR, 3/8" O.D. TUBE X 1/2" MNPT, PVDF	7744813	X	X	X	X	X	X
190	FEMALE CONNECTOR, 3/8" O.D. TUBE X 1/2" FNPT, PVDF	7800709	X	X	X	X	X	X
200	TUBING, 3/8" OD, HDPE	7741514	X	X	X	X	X	X
210	INJECTION VALVE	7747244	X	X	X	X	X	X
220	BLEED VALVE, 1/8", PVC/VITON	7747237	X	X	X	X	X	X

ProMinent ProMix 'S & C' Polymer Feeder

P/N: 7747255 Mixing Chamber Components



ProMinent ProMix 'S & C' Polymer Feeder

PROMIX S - MIXING CHAMBER BILL OF MATERIALS P/N: 7747255

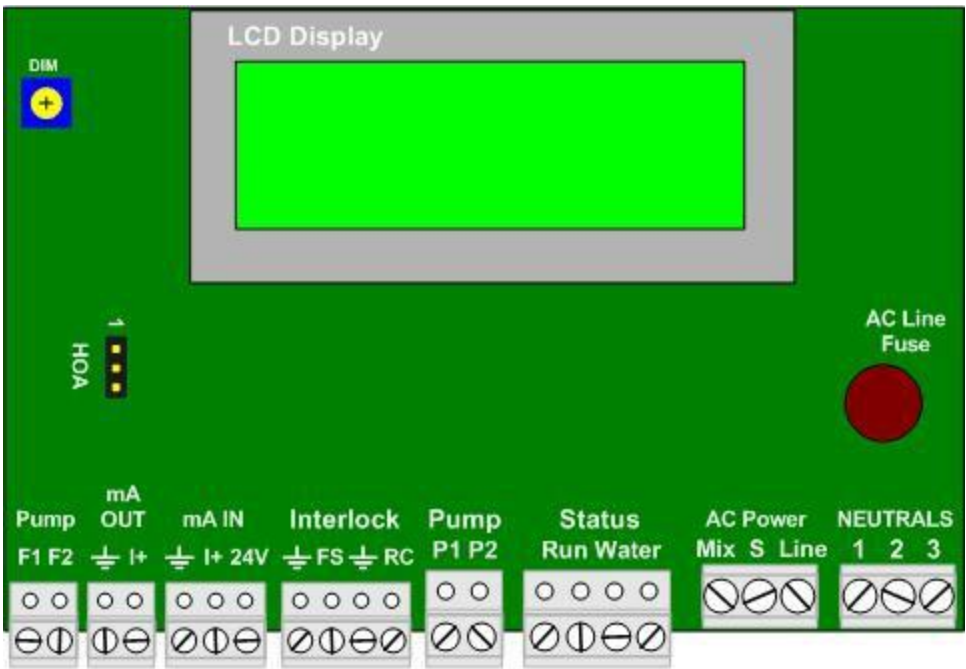
ITEM	USA P/N	QTY	DESCRIPTION
10	7746516	1	O-RING, CHAMBER, VITON, PROMIX-S
20	7747246	8	ROD, 316SS, 3/8-16 X 14.75, PROMIX-U
30	7746492	8	NUT, ACORN, 3/8-16, 18-8 SST
40	7747254	1	PLATE, TOP, PVC, 1.75, SG, PROMIX-S
50	7747269	2	INSERT, MALE, 3/4", PVC, PROMIX-S
60	7747241	2	O-RING, VITON, .987 ID X .103 CS, AS568B-120
70	7747271	2	RETAINER, MALE INSERT, 3/4" 316 SST, PROMIX-S
80	7747238	6	SCREW, 10-24X3/4", 18-8, HEX HEAD WITH WASHER
90	7747244	1	INJECTION VALVE, SG, PROMIX
100	7747239	1	RETAINER, INJECTION VALVE, 316 SST
110	7747237	1	VALVE, BALL, 1/8", MNPT X FNPT, PVC, VITON
120	7747212	1	MOTOR, 1/2 HP, TEFC, 115/230 VAC, 1 PH, 56C, BALDOR VWDL3504
130	7746478	1	FLANGE, MOTOR, C56/135, PROMIX-M
140	7500346	1	HOSE BARB, 1/16" MNPT X 3/16" ID, PVDF
150	7746484	1	SHAFT, MIXER, 303SS, PROMIX-M
160	851405	1	SCREW, SET, 316SS, 1/4-28 PROMIX-U
170	7746474	1	SEAL, MECH, SHAFT, 304SS, 1/2", PROMIX-U
180	7746588	3	ROD, 316SS, 3/8-16 X 6, PROMIX-S
190	7746586	3	SPACER, TOP BAFFLE, PROMIX-S
200	7746587	3	SPACER, BOTTOM BAFFLE, PROMIX-S
210	7747257	1	PIPE, DISCHARGE, PVC, 3/4", PROMIX-U
220	7747259	1	BAFFLE, TOP, PVC, .25, PROMIX-S
230	7747258	1	BAFFLE, BOTTOM, PVC, .25, PROMIX-S
240	1108108	1	BLADE, PRIMARY, 316SS, PROMIX-S (PFC)
250	1108109	1	BLADE, SECONDARY, 316SS, PROMIX-S (PFC)
260	7746476	4	SCREW, SET, 316SS, 1/4-28 PROMIX-U
270	7746507	1	PROP, AGITATOR, CPVC, PROMIX-S

Appendix B – Control Panel “A Controls”

B.1 Controller Board Layout

The controller consists of one circuit board.

It includes a 2 line x 16 character LCD display and a microcontroller module.

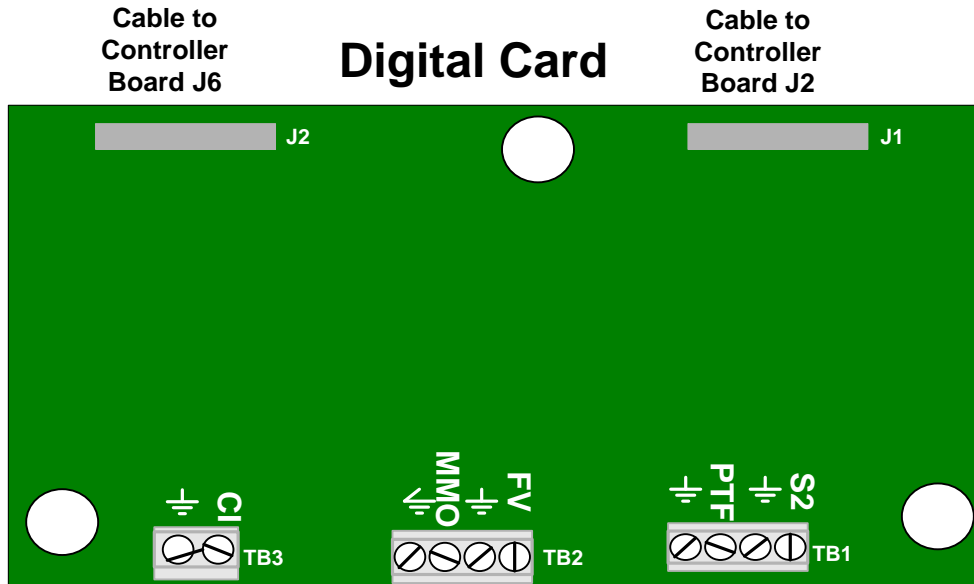


All field terminations are to be landed on terminals as per Appendix Section B.2.

ProMinent ProMix 'S & C' Polymer Feeder

Auxiliary digital input card – Internal Connections:

1. Connect cable from Digital card J1 to Controller Board J2
2. Connect cable from Digital card J2 to Controller Board J6

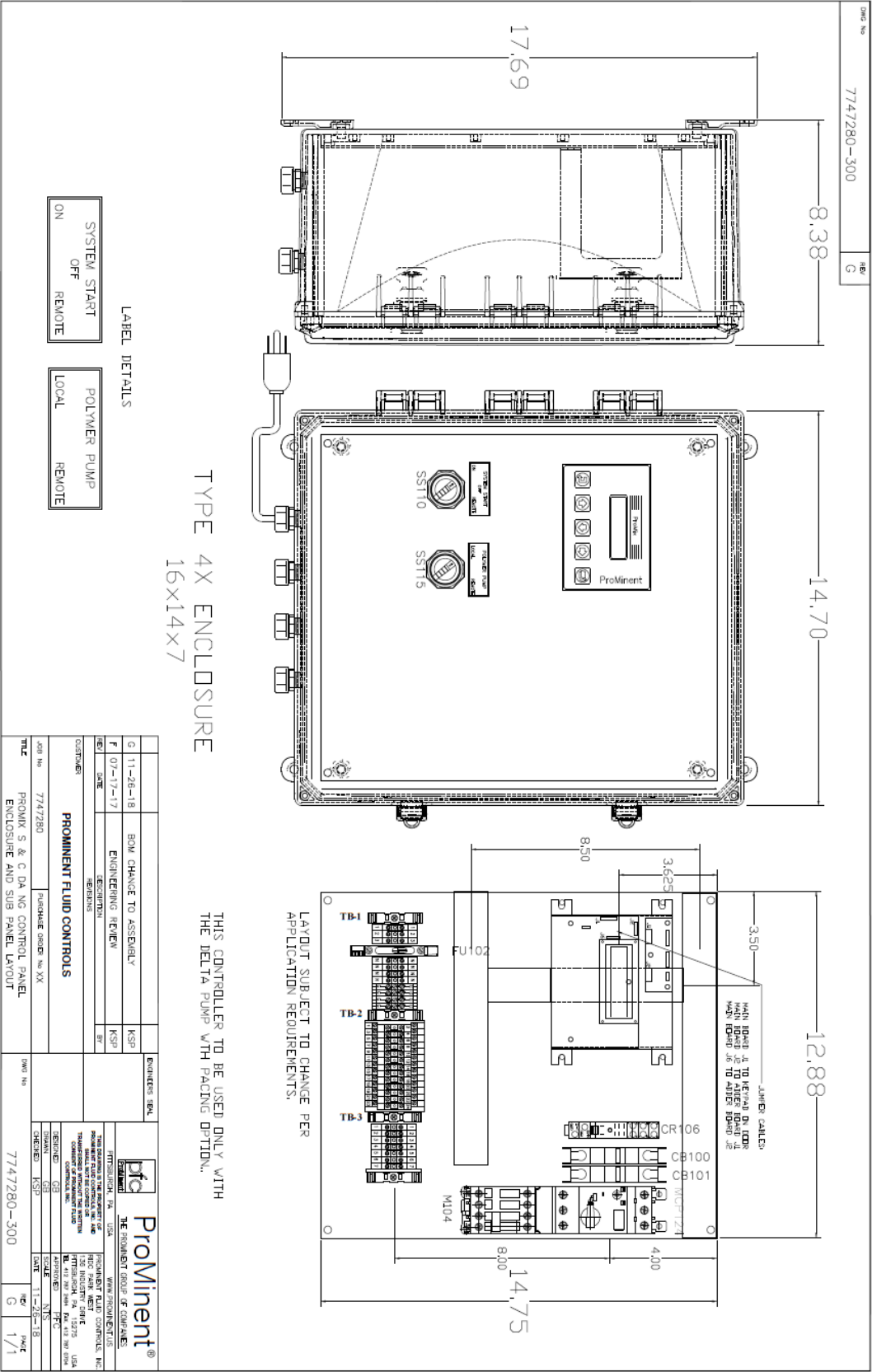


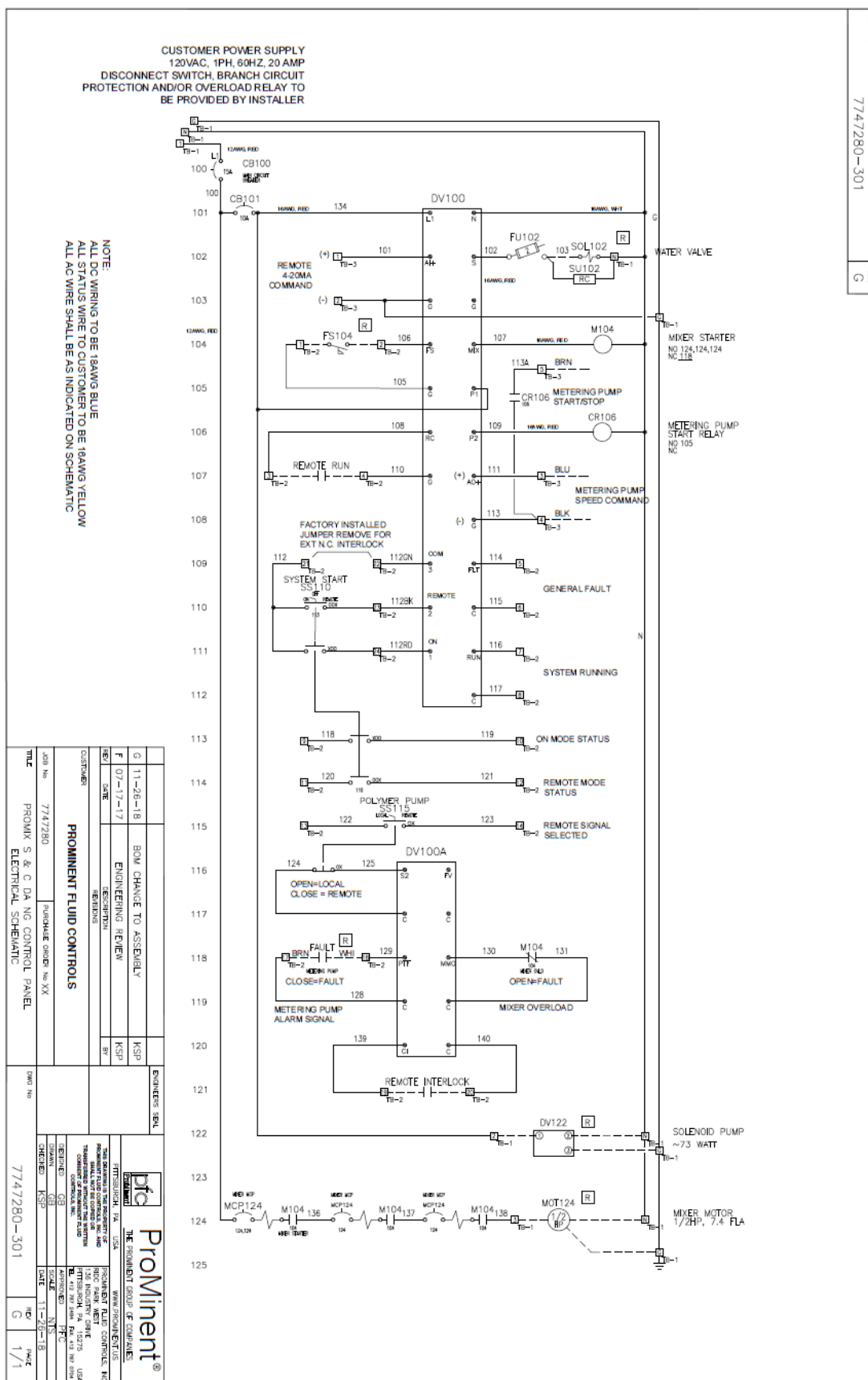
CI -
configurable
input
(sometimes
used for tank
level)

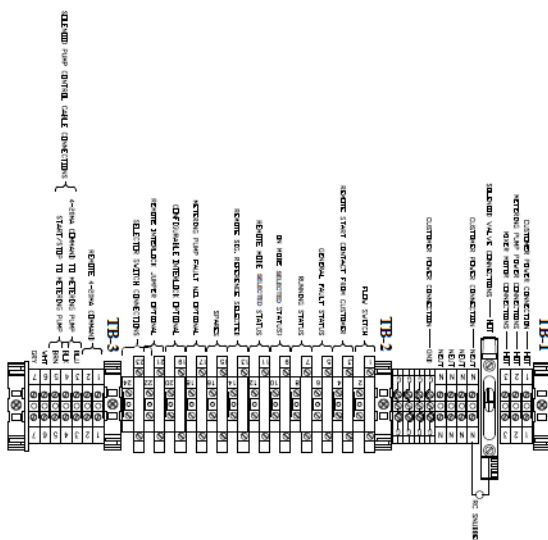
MMO – mixer motor
overload
FV – feed
verification

PTF - pump failure
S2 - interface to
Polymer Pump door
switch

B.2 Control Panel Drawings

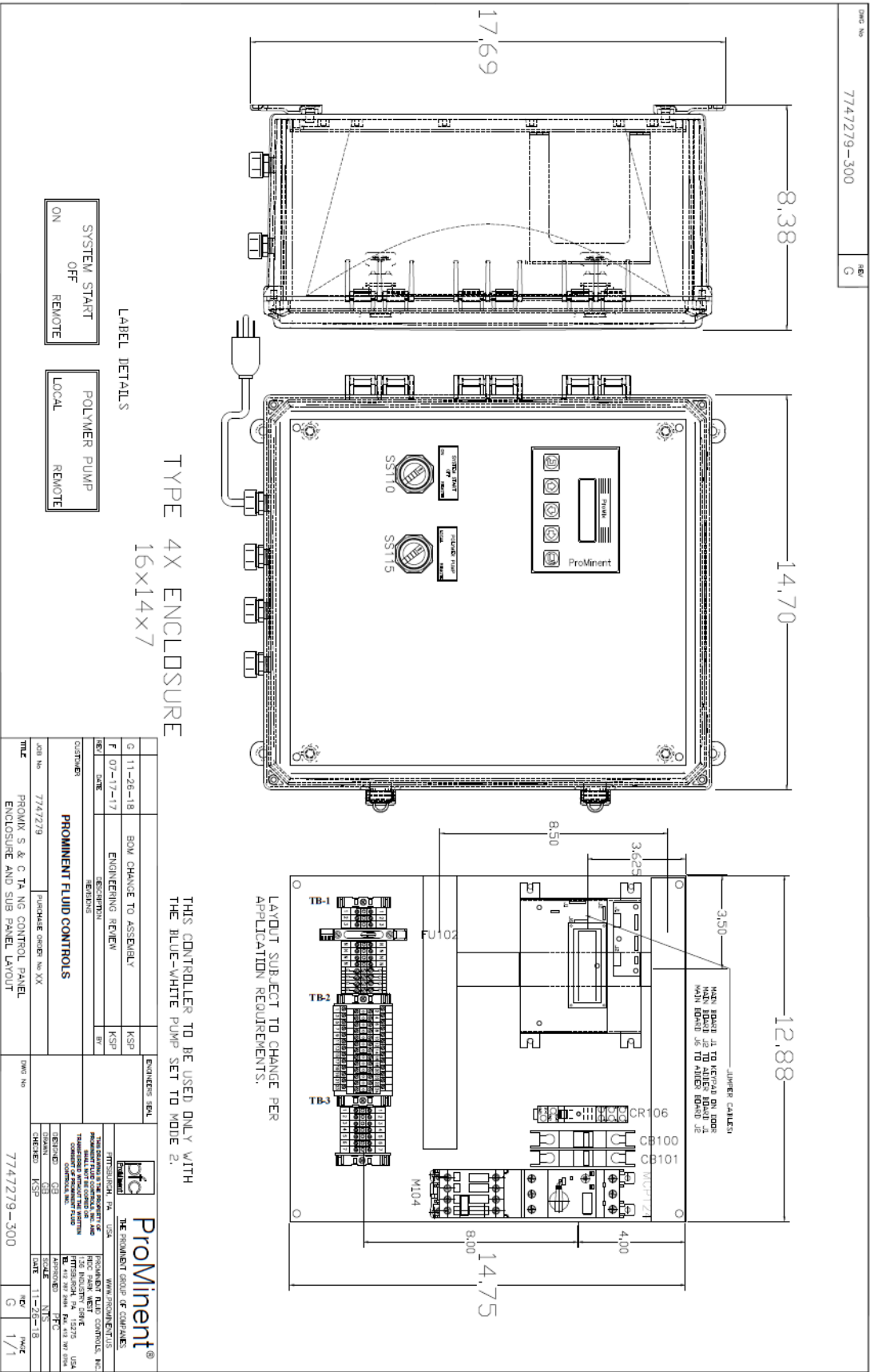


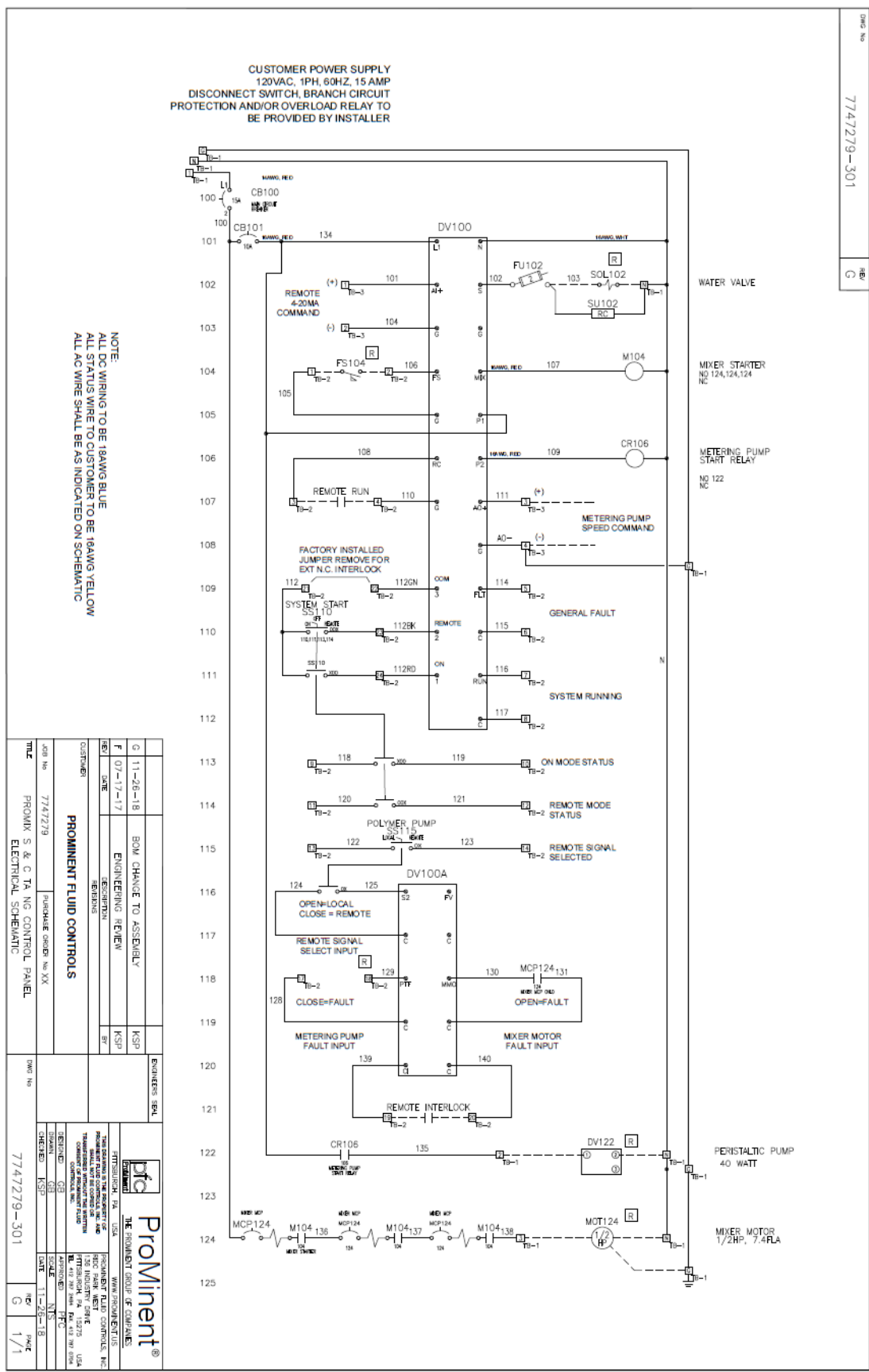


[illegible]

SELECTOR OPERATION		
SW1 ON-OFF-REMOTE	SW2 LOCAL-REMOTE	"A" CONTROL
ON	LOCAL	SYSTEM ON- LOCAL REPAD CONTROLS PUMP OUTPUT
ON	REMOTE	SYSTEM ON - REMOTE 4-20MA FOR PUMP OUTPUT
REMOTE	LOCAL	SYSTEM START VIA REMOTE DRY CONTACT - LOCAL REPAD CONTROLS
REMOTE	REMOTE	SYSTEM START VIA REMOTE DRY CONTACT - REMOTE 4-20MA FOR PUMP OUTPUT

		ENGINEER'S SEAL	
G	11-26-18	BOM CHANGE TO ASSEMBLY	KSP
F	07-17-17	ENGINEERING REVIEW	KSP
E	DATE	DESCRIPTION	BY
CONTAINER			
PROMINENT FLUID CONTROLS			
JOB No	7747280	PACKAGE ORDER No. XX	
TITLE	PROMIX S & C DA NG CONTROL PANEL		DRW No
TERMINAL STRIP DETAILS AND BILL OF MATERIAL			7747280-302





7747279-302

REV. C

POS.	QTY	ITEM	DESCRIPTION
1	1	7747277	RE-CONFIGURABLE TYPE 42 ENCLOSURE
2	1	7747102	RE-23A
3	1	7747102	RE-23A
4	1	7747102	RE-23A
5	1	7747102	RE-23A
6	1	7747102	RE-23A
7	1	7747102	RE-23A
8	1	7747102	RE-23A
9	1	7747102	RE-23A
10	1	7747102	RE-23A
11	1	7747102	RE-23A
12	1	7747102	RE-23A
13	1	7747102	RE-23A
14	1	7747102	RE-23A
15	1	7747102	RE-23A
16	1	7747102	RE-23A
17	1	7747102	RE-23A
18	1	7747102	RE-23A
19	1	7747102	RE-23A
20	1	7747102	RE-23A
21	1	7747102	RE-23A
22	1	7747102	RE-23A
23	1	7747102	RE-23A
24	1	7747102	RE-23A
25	1	7747102	RE-23A
26	1	7747102	RE-23A
27	1	7747102	RE-23A
28	1	7747102	RE-23A
29	1	7747102	RE-23A
30	1	7747102	RE-23A
31	1	7747102	RE-23A
32	1	7747102	RE-23A
33	1	7747102	RE-23A
34	1	7747102	RE-23A
35	1	7747102	RE-23A
36	1	7747102	RE-23A
37	1	7747102	RE-23A
38	1	7747102	RE-23A
39	1	7747102	RE-23A
40	1	7747102	RE-23A
41	1	7747102	RE-23A
42	1	7747102	RE-23A
43	1	7747102	RE-23A
44	1	7747102	RE-23A
45	1	7747102	RE-23A
46	1	7747102	RE-23A
47	1	7747102	RE-23A
48	1	7747102	RE-23A
49	1	7747102	RE-23A
50	1	7747102	RE-23A
51	1	7747102	RE-23A
52	1	7747102	RE-23A
53	1	7747102	RE-23A
54	1	7747102	RE-23A
55	1	7747102	RE-23A
56	1	7747102	RE-23A
57	1	7747102	RE-23A
58	1	7747102	RE-23A
59	1	7747102	RE-23A
60	1	7747102	RE-23A
61	1	7747102	RE-23A
62	1	7747102	RE-23A
63	1	7747102	RE-23A
64	1	7747102	RE-23A
65	1	7747102	RE-23A
66	1	7747102	RE-23A
67	1	7747102	RE-23A
68	1	7747102	RE-23A
69	1	7747102	RE-23A
70	1	7747102	RE-23A
71	1	7747102	RE-23A
72	1	7747102	RE-23A
73	1	7747102	RE-23A
74	1	7747102	RE-23A
75	1	7747102	RE-23A
76	1	7747102	RE-23A
77	1	7747102	RE-23A
78	1	7747102	RE-23A
79	1	7747102	RE-23A
80	1	7747102	RE-23A
81	1	7747102	RE-23A
82	1	7747102	RE-23A
83	1	7747102	RE-23A
84	1	7747102	RE-23A
85	1	7747102	RE-23A
86	1	7747102	RE-23A
87	1	7747102	RE-23A
88	1	7747102	RE-23A
89	1	7747102	RE-23A
90	1	7747102	RE-23A
91	1	7747102	RE-23A
92	1	7747102	RE-23A
93	1	7747102	RE-23A
94	1	7747102	RE-23A
95	1	7747102	RE-23A
96	1	7747102	RE-23A
97	1	7747102	RE-23A
98	1	7747102	RE-23A
99	1	7747102	RE-23A
100	1	7747102	RE-23A

Diagram of the FU102 control panel showing terminals TB-1, TB-2, and TB-3. TB-1 includes terminals for START, STOP, and RUN. TB-2 includes terminals for FORWARD, REVERSE, and BRAKE. TB-3 includes terminals for LOCAL, REMOTE, and STOP. The diagram also shows the connection to the FU102 unit and the PUMP OUTPUT terminal.

G 11-26-18		BOX CHANGE TO ASSEMBLY		KSP
F 07-17-17		ENGINEERING REVIEW		KSP
DATE		REVISIONS		BY
CUSTOMER				
PROMINENT FLUID CONTROLS				
PROMIX S & C TA NO CONTROL PANEL				
TERMINAL STRIP DETAILS AND BILL OF MATERIAL				
JOB No.	7747279	PUMPING CIRCUIT No.	XX	
TITLE				2002 No.
7747279-302				1/1

B.3 4-20 mA Input Scaling

1. **Feeding More Polymer when the 4-20mA Input Current Decreases:**

If you set Scale lin @ 4mA to 4mA = 100% and Scale lin @ 20mA to 20mA = 0%, the feeder will accommodate a logically inverted controlling 4-20mA current loop.

However, the default lin Fail State is polymer pump OFF at 3.85mA.

If a current signal <4.0mA does not represent a control loop fault at your site, you may wish to set the lin Fail State to Pump @ 100%.

2. **Non-Zero % at 4.0mA & 100% @ <20mA:**

To verify a non-standard 4-20mA input scaling, Set Scale lin @ 4mA to 4mA = 20% and Scale lin @ 20mA to 12mA = 100%.

For a controlling current loop is at each of the following values:

Greater than 12mA = 100% pump speed

4.0mA = 20% pump speed

$12 \text{ to } 4\text{mA} = (100\% - 20\%) \times (\text{mA} - 4) / (12 - 4) + 20\%$

Example: At 10.4mA control current: $(80\% \times (10.5 - 4) / 8) + 20\% = 85\%$ pump speed

3. **Correct Pump Response buy more Complex than needed:**

If you also logically invert the 4-20mA pump response it may get confusing for you to verify the pump response to the 4-20mA input.

If you set Scale lin @ 4mA to 6mA = 100% and Scale lin @ 20mA to 16mA = 10%

$16 \text{ to } 6\text{mA} = (10\% - 100\%) \times (\text{mA} - 16) / (6 - 16) + 10\%$

Example: At 13.6mA control current: $(-90\% \times (10.5 - 4) / 8) + 20\% = 31\%$ pump speed

Few users will need to re-scale more than one of the current or percentage parameters. Many users will not have to re-scale the 4-20mA input; 4-20mA will be 0-100% pump speed.

4. **Dual Logical Inversion:**

Be careful how you set the scaling currents and percentages. The effect is not always obvious.

If you set Scale lin @ 4mA to 20mA = 100% and Scale lin @ 20mA to 4mA = 0% You've logically inverted both the control current and the pump response – you are then back to factory default span & control response

This is not a fault but could be confusing to other users

5. **Keying Error Response:**

Be aware not to accidentally set both the 4mA and 20mA scaling to the same values!

For example if you set Scale lin @ 4mA to 10mA = 100% and

Scale lin @ 20mA to 10mA = 0%, the feeder forces a 0.1mA difference

If you set Scale lin @ 4mA to 4mA = 50% and Scale lin @ 20mA to 20mA = 50%, the feeder forces a 1% difference.

Correct any keying error prior to operating the ProMix S&C Systems

Appendix C – Polymer Sizing / Dosage

The ProMix S & C Polymer Pump switch on the controller door enables the user to select either LOCAL or REMOTE operation. In 'LOCAL', the polymer pump speed is selectable from 0 - 100% using the controller keypad. In 'REMOTE', the polymer pump speed is controlled by a remote 4-20 mA signal representing 0 – 100%.

The desired polymer dosage must be considered prior to selecting the ProMix S/C model and pump speed. Typically the user will know how much polymer is required. This information is from jar tests or from prior experience. Otherwise the dosage can be derived from an initial manual calculation which must be adjusted based upon actual operation.

Below are typical guidelines to estimate polymer feed dosage:

1. For a Clarifier / Filter application:

A = MGD Plant Flow
B = ppm active polymer
C = desired solution concentration (%)

$$(A*B)/24 = \text{GPH active polymer}$$

$$\text{GPH active polymer}/C = \text{Required dilution range}$$

2. For a Sludge Dewatering application:

User must have the following information to estimate GPH neat polymer:

A = GPM sludge
B = % solids (concentration)
C = lbs polymer per dry ton
D = percent active polymer
E = desired solution concentration (%)

$$(((A*8.34)*B)*60)/2000 = \text{Tons/Hr dry sludge}$$

$$(((\text{Tons/Hr dry sludge}*C)/8.34)/D)/E = \text{Required dilution range}$$

The polymer concentration from the ProMix S/C Polymer feeder is based upon the neat polymer pump rate divided by the total water flow through the primary and secondary rotameters. For example, if the neat polymer feed rate is 1.5 gph and the flow through the primary rotameter is 15 gpm and the flow through the secondary rotameter is 10 gpm then the polymer concentration is:

$$((1.5 \text{ gph} / 60) / (15 \text{ gpm} + 10 \text{ gpm})) = 0.001 = 0.1\%$$

Further post dilution is possible with equipment by others.

Appendix D – Reference Documents

Mechanical General Arrangement Drawings – ProMix C:

1048360 -200	ProMix C SG 60X1-0.22TA System
1048361 -200	ProMix C SG 60X2-0.95TA System
1048362 -200	ProMix C SG 120X2-0.95TA System
1048363 -200	ProMix C SG 120X2-2.00TA System
1048364 -200	ProMix C SG 300X2-2.00TA System
1048365 -200	ProMix C SG 300X2-3.73TA System
1048460 -200	ProMix C SG 60X1-1.01DA System
1048461 -200	ProMix C SG 60X2-1.01DA System
1048462 -200	ProMix C SG 120X2-1.01DA System
1048463 -200	ProMix C SG 120X2-2.30DA System
1048474 -200	ProMix C SG 300X2-2.30DA System
1048475 -200	ProMix C SG 300X2-3.70DA System

Mechanical General Arrangement Drawings – ProMix S:

1048346 -200	ProMix S SG 60X1-0.22TA System
1048347 -200	ProMix S SG 60X2-0.95TA System
1048348 -200	ProMix S SG 120X2-0.95TA System
1048349 -200	ProMix S SG 120X2-2.00TA System
1048351 -200	ProMix S SG 300X2-2.00TA System
1048352 -200	ProMix S SG 300X2-3.73TA System
1048353 -200	ProMix S SG 60X1-1.01DA System
1048354 -200	ProMix S SG 60X2-1.01DA System
1048355 -200	ProMix S SG 120X2-1.01DA System
1048356 -200	ProMix S SG 120X2-2.30DA System
1048357 -200	ProMix S SG 300X2-2.30DA System
1048358 -200	ProMix S SG 300X2-3.70DA System

Electrical Schematic Drawings:

7747279-300	PROMIX-S&C TA NG Control Panel
7747280-300	PROMIX-S&C DA NG Control Panel

Pump Manuals:

80000-381_A100NV	Blue White Pump - Operating Manual
------------------	------------------------------------

Instructional Manuals:

7746471-400	Injection Valve Cleaning Instructions
7746589-400	Mixing Chamber Mechanical Seal Replacement

(Provided upon request)

Documents noted in this section are not in this manual

Appendix E - Keypad Menu Overview

