

# NEW ProMtrac Controller

## Cooling Tower Controller



*Cooling Tower controller with intuitive rotary interface provides simple menu navigation while offering flexibility and reliable control. The Start Up Wizard makes programming fast and easy. Comprehensive, pre-configured programming is also available at no additional cost using the latest innovation, Plug & Feed.*

### Features & Benefits

- LED Alarm status indicator
- Rotary interface with menu selectable push button keys
- Start Up Wizard for fast and easy programming
- Data logging with USB drive
- Browser command & control
- 4 Analog inputs with flexible offering:
  - 2 Conductivity inputs for cycle control
  - 1 pH or ORP input
  - 1 Fluorometer input with ppb control
- 3 Digital inputs:
  - Makeup water meter
  - Bleed water meter
  - One configurable contact set
- 5 Relays with LED indicators and customizable faceplate descriptions:
  - 1 standard powered solenoid or motorized ball valve
  - 4 configurable relays
  - LED indicators for system status
- Up to two 4-20 mA outputs
- User selectable thermal or mechanical flow switch
- Load fuse alarm



# ProMtrac Controller

## Identcode & Ordering Information

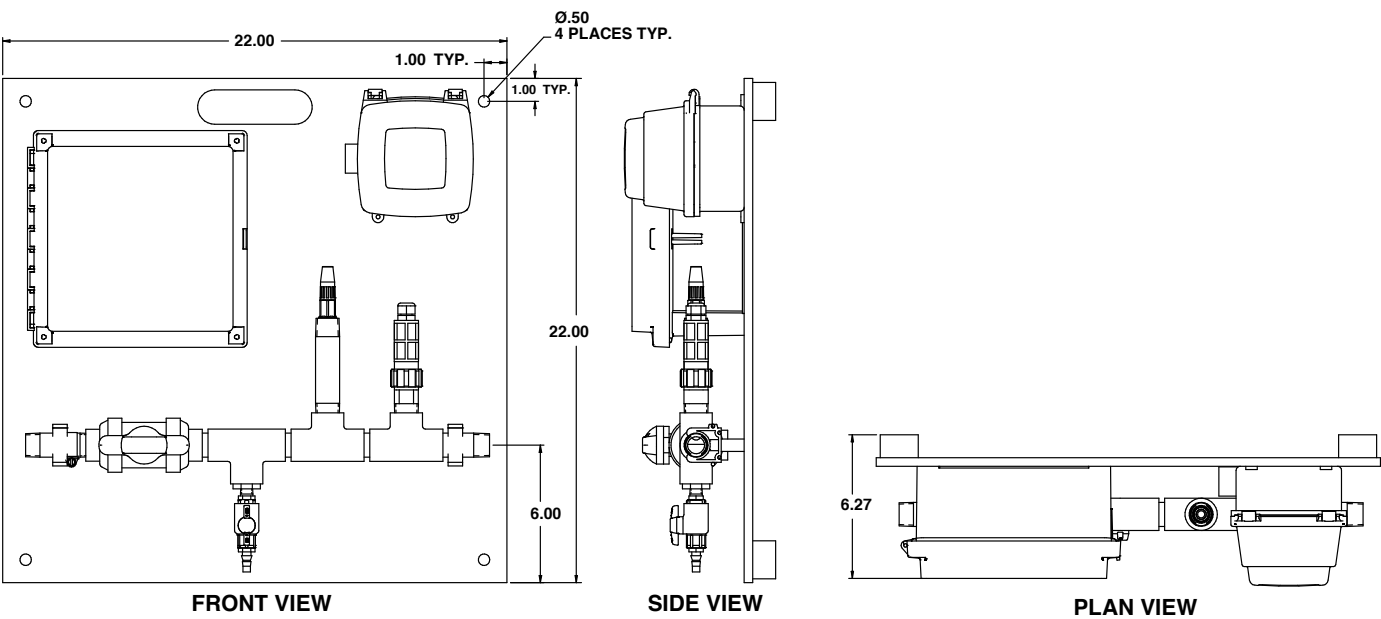
PRMT Version:																
PRMT	A															
		Enclosure Type:														
		0	Standard													
		pH/ ORP Sensor:														
		0	None													
		1	pH													
		2	ORP													
		4-20mA Analog Input:														
		0	None													
		1	One													
		4-20 mA Analog Output:														
		0	none													
		1	one													
		2	two													
		Make-up Conductivity Sensor:														
		0	None													
		1	One													
		Power Cord:														
		0	None													
		1	US Standard 115 V													
		2	230 VAC North American Plug													
		Umbilical Outlets:														
		0	None													
		1	Quad-Box 115 VAC													
		2	Four Outlet Cords 115 VAC													
		Expansion:														
		0	None													
		Remote Communications:														
		0	None													
		Accessories:														
		0	None													
		Execution:														
		0	Standard													
		Language:														
		0	English													
		Approval:														
		0	Standard													
PRMT	A	0	0	0	0	0	0	1	2	0	0	0	0	0	0	

# Ordering Information

Spare Parts / Accessories	
Part Number	Description
7500979	Low pressure CTF conductivity/temperature/ flow assembly, 125 psi (sensor only 7761529)
7500980	High pressure CTF conductivity/temperature/ flow assembly, 300 psi (sensor only 7761533)
7760768	ORP sensor (RHEP OI-SE) (sensor only 150094)
7760729	pH sensor (PHED 112 SE) (sensor only 741036)
7500727	In-Line Fluorometer
7500850	Fuse
7501032	Programmed CII driver card
7501031	Programmed main board
7500790	4-20 mA driver output card
7500791	pH or ORP driver card

# Dimensions

## ProMtrac Package



# NEW ProMtrac Controller

## Specifications

### Inputs

Power:	115/230 VAC, 50-60HZ, 5 amp
Conductivity Sensor #1:	Tower conductivity sensor includes integral temperature and flow sensors
Conductivity Sensor #2:	Make-up water conductivity sensor includes integral temperature and flow sensors
pH/ORP Sensor:	ProMtrac can be configured with either a pH or ORP probe
Flow Meter #1:	Accepts paddlewheel pulse output flow sensor
Flow Meter #2:	Accepts paddlewheel pulse output flow sensor
4-20mA:	For use with loop powered fluorometer. ProMtrac has internal power supply for sensor.

### Outputs

4 Mechanical Relays, Form A dry contact with optional 115/230 VAC, 5 Amp power available

1 Relay dedicated for bleed valve

*(Note: Total load for all five relays fused at 5 Amp total. Motor driven pumps will require interposing starter.)*

4-20mA, 300 Ohm resistive

Can be configured to represent conductivity, pH or ORP

### USB Features

Controller configuration

Configuration file can be uploaded quickly and easily from memory stick

Operational Datalog:

- Signal values
- Relays status
- Analog value(s)
- Time stamp

Data easily imports into spreadsheet

### Ethernet

10/100 Base T, TCP/IP Ethernet LAN HTML micro web server with user definable IP address

### Mechanical

Enclosure:	Polycarbonate NEMA 4X (IP65)
Display:	4 x 20 character backlit liquid crystal
Shipping weight:	7 lbs (3 kg) (approximately)

### Sensor manifold/backpanel option

Connections:	¾" NPTF
Temperature:	140°F (60°C)



**ProMinent Fluid Controls, Inc.**  
136 Industry Drive • Pittsburgh, PA 15275 USA  
(412) 787-2484 • Fax: (412) 787-0704  
email: sales-US@prominent.com [www.prominent.us](http://www.prominent.us)

© 2013 ProMinent Fluid Controls, Inc. All Rights Reserved.

PN: 7750303  
ProMtrac\_4pg.indd 03/05/2013