

► Flow rates up to 529 gph (2004 l/h)
Pressures up to 174 psi (12 bar)

ProMinent® Makro Series

Experts in Chemical Feed and Water Treatment

ProMinent®

Rugged, accurate and dependable pumps!

The ProMinent® Makro TZMb is a mechanically or hydraulically actuated motor driven diaphragm metering pump.

The stroke length can be adjusted by means of the shift ring mechanism from 0-10 mm (TZMb), with 0.5 % accuracy. The 5-speed gearbox is encased in a cast, seawater resistant, acrylic resin lacquered housing. Liquid ends are available in different material combinations to suit differing applications.

The suction lift varies according to the density and viscosity of the medium, the dimension of the pipework and the pump stroke rate. Reproducibility of metering is better than ± 2 % in the stroke length range from 30 % -100 % subject to defined conditions and correct installation.



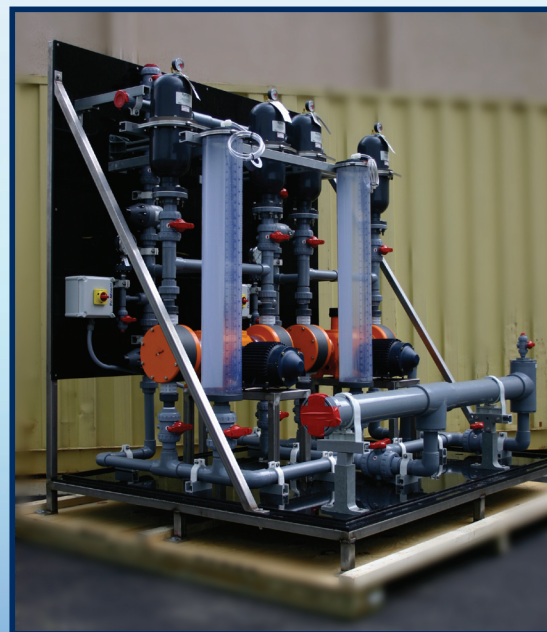
ProMinent® Makro TZb HM

Applications

- The addition of chemicals based on measured values, e.g. acid and caustic metering for pH neutralization in wastewater treatment
- Metering of treatment agents in industrial production technology
- Time-controlled metering of chemicals for ion exchange regeneration
- Varied Water and wastewater treatment applications
- Some heavy industrial applications

Features and benefits

- Supplied as a single or dual-headed version
- Add on pumps can easily be retrofitted on site if necessary
- Each pump has its own independent stroking frequency due to its own internal gear reducer
- Stroke rate: Standard speed motor or variable automatic capacity adjustment
- Gear housing: cast housing with a corrosion resistant acrylic resin lacquer finish



complete systems

ProMinent® Makro Series

Experts in Chemical Feed and Water Treatment

Capacity data

with 1800 rpm motor at 60 Hz Pump Capacity at Max. backpressure						Max. Stroke Frequency	Suc- tion Lift	Connection Suction Discharge Side	Shipping Weight PP, PC, TT/SS
Pump type	gph	l/h	psi	bar	ml/ stroke	strokes/ min.	ft (m)	in (DN)	lb (kg)
TZMbH									
120260	82	312	174	12	60	86	13.1 (4)	1 1/2 (25)	101.4/119 (46/54)
120340	108	408	174	12	60	115	13.1 (4)	1 1/2 (25)	101.4/119 (46/54)
120430	136	516	174	12	60	144	13.1 (4)	1 1/2 (25)	101.4/119 (46/54)
120510	162	612	174	12	60	173	13.1 (4)	1 1/2 (25)	101.4/119 (46/54)
120650	-	-	174	12	60	-	13.1 (4)	1 1/2 (25)	101.4/119 (46/54)
070430	136	516	100	7	99	86	11.5 (3.5)	2 (32)	110.2/141 (50/64)
070570	180	684	100	7	99	115	11.5 (3.5)	2 (32)	110.2/141 (50/64)
070720	228	864	100	7	99	144	11.5 (3.5)	2 (32)	110.2/141 (50/64)
070860	272	1032	100	7	99	173	11.5 (3.5)	2 (32)	110.2/141 (50/64)
071070	-	-	100	7	99	-	11.5 (3.5)	2 (32)	110.2/141 (50/64)
040840	266	1008	58	4	194	86	9.8 (3)	2 1/4 (40)	123.5/176.4 (56/80)
041100	348	1320	58	4	194	115	9.8 (3)	2 1/4 (40)	123.5/176.4 (56/80)
041400	443	1680	58	4	194	144	9.8 (3)	2 1/4 (40)	123.5/176.4 (56/80)
041670	529	2004	58	4	194	173	9.8 (3)	2 1/4 (40)	123.5/176.4 (56/80)
042100	-	-	58	4	194	-	9.8 (3)	2 1/4 (40)	123.5/176.4 (56/80)

Stroke length 10 mm

The admissible priming pressure on the suction side is 50 % of the maximum back pressure.

The TZMa version is still available "on request".

Liquid end materials in contact with media

Pump Head		Suction/ Dis- charge Connector	DN 25 Ball Valves		Valve Seat	DN 32/DN 40 Plate Valves**		
			Seals	Valve Balls		Seals	Valve Plate/ Valve Spring	Valve Seat
PPT	Polypropylene	PVDF	PTFE	Ceramic	PTFE	PTFE	Ceramic/ Hast. C + CTFE**	PTFE
PCT	PVC	PVDF	PTFE	Ceramic	PTFE	PTFE	Ceramic/ Hast. C + CTFE**	PTFE
TTT	PTFE with carbon	PTFE with carbon	PTFE	Ceramic	PTFE	PTFE	Ceramic/ Hast. C + CTFE**	PTFE
SST	Stainless steel	Stainless steel	PTFE	Stainless steel	PTFE	PTFE	Stainless steel Hast. C + CTFE*	PTFE

Multi-layer safety diaphragm with PTFE coating.

** The valve spring is coated with CTFE (similar to PTFE)

Custom designs available to order.

ProMinent Fluid Controls, Inc. (US)

136 Industry Drive,
Pittsburgh, PA 15275-1014
Tel: (412) 787-2484
Fax: (412) 787-0704
eMail: sales@prominent.us
www.prominent.us

ProMinent Fluid Controls Ltd. (Canada)

490 Southgate Drive,
Guelph, ON N1G 4P5
Tel: 1-888-709-9933 | (519) 836-5692
Fax: (519) 836-5226
eMail: sales@prominent.ca
www.prominent.ca

ProMinent®