

ProMinent® ProMix™-M (A Controls)

Overview: ProMix™-M (A Controls)



The ProMinent® ProMix™ is a pre-engineered polymer mixing system with intuitive controls. Designed as an in-line or make wwdown unit, the ProMix™ is engineered to meet liquid polymer applications utilizing diaphragm or progressive cavity pump technologies. The unique mixing regime delivers a highly activated polymer solution to every application with optimum performance.

Feature & Benefits

- LCD display with touchpad control
- 4-20mA input to pace pump
- Remote start/stop
- General alarm contacts
- Adjustable flush settings
- True multi-zone mixing chamber that delivers a tapered energy profile for proper polymer activation
- Unique injection check valve with easy access for cleaning
- Diaphragm and progressive cavity pump options
- System protection against loss of water flow
- Precise activated polymer solution delivery
- Open design for easy maintenance

Specifications

- | | | | |
|----------------------------|-----------------|---------------------|--|
| ■ Water Inlet: | 1-1/2" FNPT | ■ Power Supply: | 120 VAC, 1 Phase, 60Hz |
| ■ Polymer Inlet: | 1/2" or 1" FNPT | ■ Current Load: | 20 Amp for (DA) models
30 Amp for (PA) models |
| ■ Product Outlet: | 1-1/2" FNPT | ■ Drain Connection: | 1/4" |
| ■ Max. Chamber Pressure: | 150 PSIG | | |
| ■ Max. Operating Pressure: | 100 PSIG | | |

ProMinent® ProMix™-M (A Controls)

Capacity Data

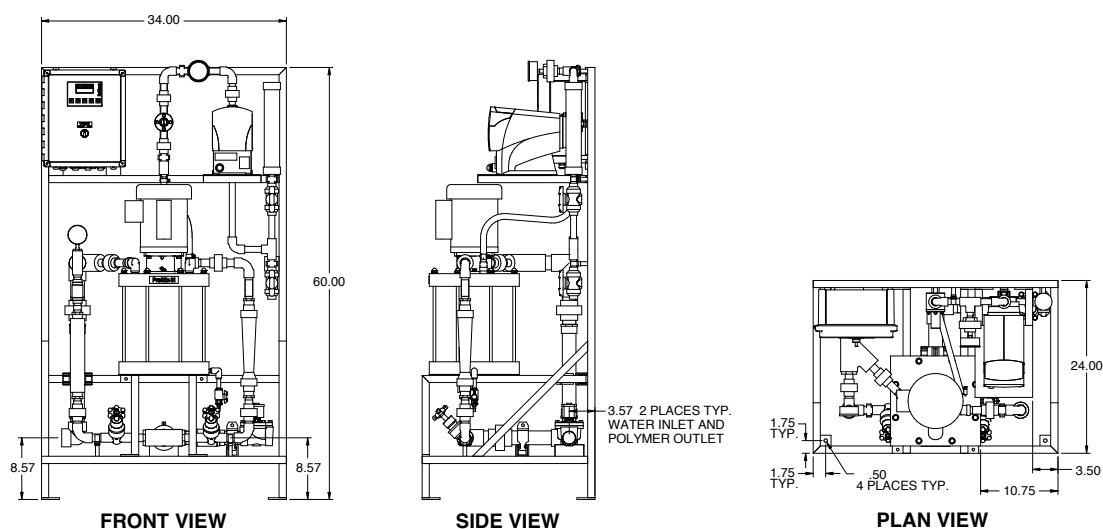
ProMix™ -M (A Controls)	Number Model	Primary Dilution		Secondary Dilution		Polymer Pump (gph)	Max Pump Pressure
		gph	(gpm)	gph	(gpm)		
7746635	PROMIX-M_0-300x2-2.4DA	300	(5)	300	(5)	2.4	100 psi
7746636	PROMIX-M_0-600x2-4.0DA	600	(10)	600	(10)	4.0	100 psi
7746637	PROMIX-M_0-600x2-6.2DA	600	(10)	600	(10)	6.2	100 psi
7746638	PROMIX-M_0-600x2-10.0DA	600	(10)	600	(10)	10.0	58 psi
7746639	PROMIX-M_0-1200x2-6.2DA	1200	(20)	1200	(20)	6.2	100 psi
7746640	PROMIX-M_0-1200x2-10.0DA	1200	(20)	1200	(20)	10.0	58 psi
7746641	PROMIX-M_0-1500x2-6.2DA	1500	(25)	1500	(25)	6.2	100 psi
7746642	PROMIX-M_0-1500x2-10.0DA	1500	(25)	1500	(25)	10.0	58 psi
7746643	PROMIX-M_0-300x2-5.0PA	300	(5)	300	(5)	5.0	100 psi
7746644	PROMIX-M_0-600x2-5.0PA	600	(10)	600	(10)	2.5	100 psi
7746645	PROMIX-M_0-600x2-10.0PA	600	(10)	600	(10)	10.0	100 psi
7746646	PROMIX-M_0-1200x2-10.0PA	1200	(20)	1200	(20)	10.0	100 psi
7746647	PROMIX-M_0-1200x2-24.0PA	1200	(20)	1200	(20)	24.0	100 psi
7746648	PROMIX-M_0-1500x2-10.0PA	1500	(25)	1500	(25)	10.0	100 psi
7746649	PROMIX-M_0-1500x2-24.0PA	1500	(25)	1500	(25)	24.0	100 psi

Nomenclature of Units:

DA = Diaphragm Pump w/A Controls

PA = Progressive Cavity Pump w/A Controls

Dimensional Drawings



ProMinent® ProMix™-M (B Controls)

Overview: ProMix™-M (B Controls)



The ProMinent® ProMix™ is a pre-engineered polymer mixing system with intuitive controls. Designed as an in-line or make down unit, the ProMix™ is engineered to meet liquid polymer applications utilizing diaphragm or progressive cavity pump technologies. The unique mixing regime delivers a highly activated polymer solution to every application with optimum performance.

Feature & Benefits

- LCD display with touchpad control
- Primary & secondary flow display
- 4-20mA input to pace pump
- Remote start/stop
- General alarm contacts
- System browser view
- Maintains desired concentration based on primary and secondary dilution water flow
- Ethernet communications and datalogging
- True multi-zone mixing chamber that delivers a tapered energy profile for proper polymer activation
- Unique injection check valve with easy access for cleaning
- Diaphragm and progressive cavity pump options
- System senses loss of water flow and neat polymer flow
- Precise activated polymer solution delivery
- Open design for easy maintenance
- System alarm and running lights

Specifications

- Water Inlet: 1-1/2" FNPT
- Polymer Inlet: 1/2" or 1" FNPT
- Product Outlet: 1-1/2" FNPT
- Max. Chamber Pressure: 150 PSIG
- Max. Operating Pressure: 100 PSIG
- Power Supply: 120 VAC, 1 Phase, 60Hz
- Current Load: 20 Amp for (DB) models
30 Amp for (PB) models
- Drain Connection: 1/4"

ProMinent® ProMix™-M (B Controls)

Capacity data

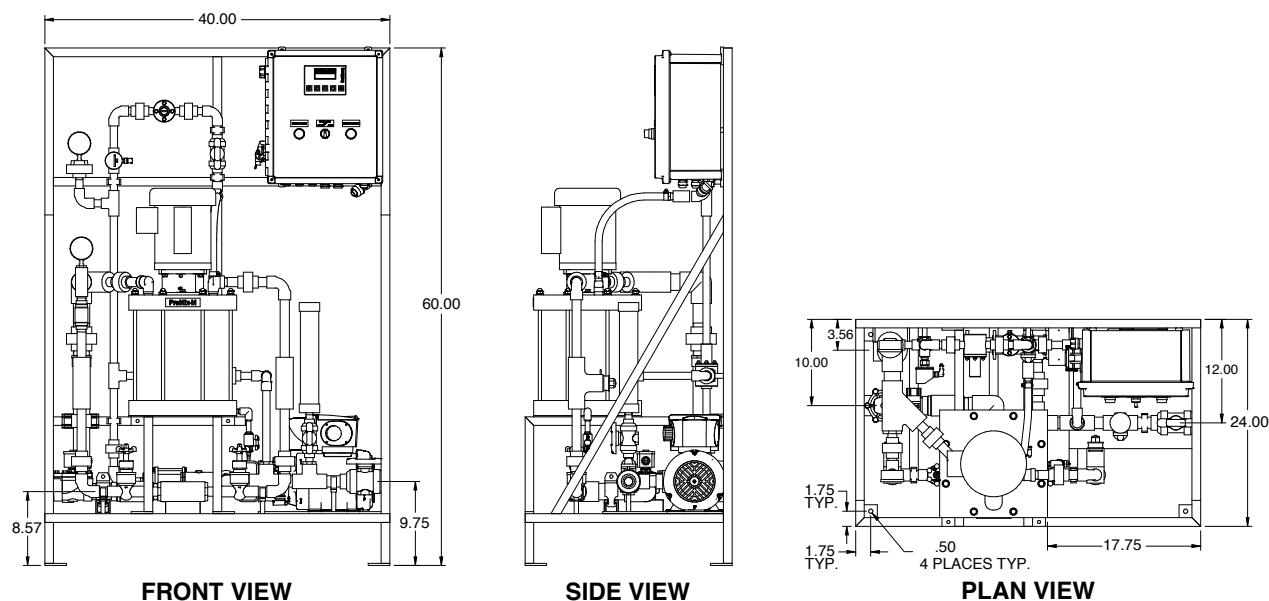
ProMix™ -M P/N	Model Number	Primary Dilution		Secondary Dilution		Polymer Pump gph	Max Pump Pressure
		gph	(gpm)	gph	(gpm)		
7746543	M_0-300x2-2.4DB	300	(5)	300	(5)	2.4	100 psi
7746544	M_0-600x2-4.0DB	600	(10)	600	(10)	4.0	100 psi
7746545	M_0-1500x2-6.2DB	1500	(25)	1500	(25)	6.2	100 psi
7746546	M_0-1500x2-10.0DB	1500	(25)	1500	(25)	10.0	58 psi
7746547	M_0-1500x2-5.0PB	1500	(25)	1500	(25)	5.0	100 psi
7746548	M_0-1500x2-10.0PB	1500	(25)	1500	(25)	10.0	100 psi
7746549	M_0-1500x2-24.0PB	1500	(25)	1500	(25)	24.0	100 psi

Nomenclature of Units:

DB = Diaphragm Pump w/B Controls

PB = Progressive Cavity Pump w/B Controls

Dimensional Drawings



ProMinent® ProMix™-S

Overview: ProMix™-S



The ProMinent ProMix™ is a pre-engineered polymer mixing system made for the water and wastewater markets. Designed as an in-line unit, the ProMix™ can be customized to meet most liquid polymer applications utilizing tubing pump technology. The unique mixing chamber allows for complete make down of the neat or diluted polymer to guarantee problem-free injection.

Feature & Benefits

- Open design for easy maintenance
- True multi-zone mixing regime for proper polymer activation
- Unique injection check valve with easy access for cleaning
- Adjustable auto flush settings
- System protection against loss of water flow
- Precise activated polymer solution delivery
- LCD display with touchpad control
- 4-20mA input to pace pump
- Remote start/stop
- General alarm contacts

Specifications

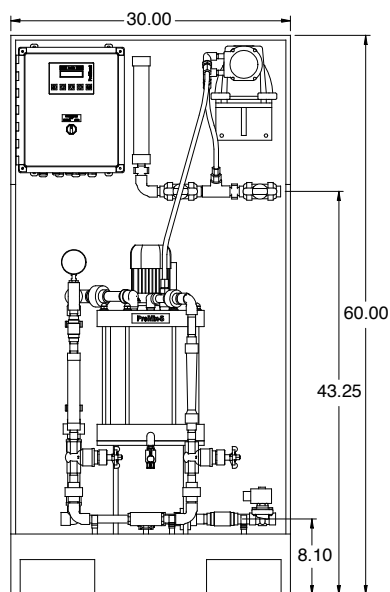
- Water Inlet: 3/4" FNPT
- Polymer Inlet: 1/2" FNPT
- Product Outlet: 3/4" FNPT
- Max. Chamber Pressure: 150 PSIG
- Max. Operating Pressure: 100 PSIG
- Power Supply: 120 VAC, 1 Phase, 60Hz
- Current Load: 15 Amp
- Drain Connection: 1/4"

ProMinent® ProMix™-S

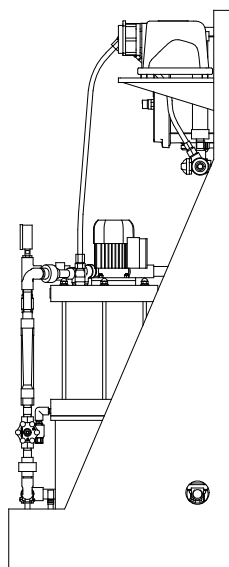
Capacity data

ProMix™-S Series P/N	Model Number	Primary Dilution gph	Primary Rotameter (gpm)	Secondary Dilution gph	Secondary Rotameter (gpm)	Peristaltic Pump gph	Max Pump Pressure psi
7746602	60-0.21TA	60	1	-	-	0.21	100 psi
7746603	60x2-0.71TA	60	1	60	1	0.71	100 psi
7746604	180x2-0.71TA	180	3	120	2	0.71	100 psi
7746605	180x2-1.67TA	180	3	120	2	1.67	25 psi
7746606	300x2-2.50TA	300	5	300	5	2.50	25 psi
7746607	300x2-3.54TA	300	5	300	5	3.54	25 psi

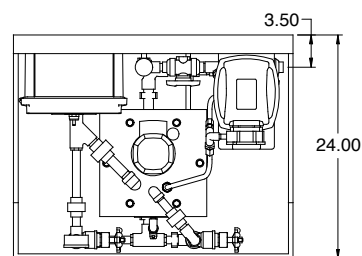
Dimensional Drawings



FRONT VIEW



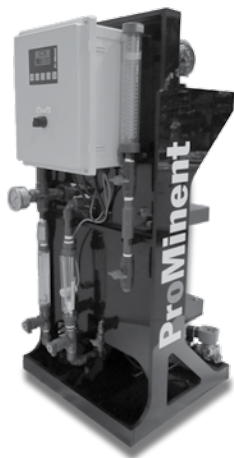
SIDE VIEW



PLAN VIEW

ProMinent® ProMix™-C

Overview: ProMix™-C



The ProMinent ProMix™ is a pre-engineered polymer mixing system made for the water and wastewater markets. Designed as an in-line unit, the ProMix™ can be customized to meet most liquid polymer applications utilizing tubing pump technology. The unique mixing chamber allows for complete make down of the neat or diluted polymer to guarantee problem-free injection.

Feature & Benefits

- Open design for easy maintenance
- True multi-zone mixing regime for proper polymer activation
- Unique injection check valve with easy access for cleaning
- Adjustable auto flush settings
- System protection against loss of water flow
- Precise activated polymer solution delivery
- LCD display with touchpad control
- 4-20mA input to pace pump
- Remote start/stop
- General alarm contacts

Specifications

- Water Inlet: 3/4" FNPT
- Polymer Inlet: 1/2" FNPT
- Product Outlet: 3/4" FNPT
- Max. Chamber Pressure: 150 PSIG
- Max. Operating Pressure: 100 PSIG
- Power Supply: 120 VAC, 1 Phase, 60Hz
- Current Load: 15 Amp
- Drain Connection: 1/4"

ProMinent® ProMix™-C

Capacity data

ProMix™-C Series P/N	Model Number	Primary Dilution gph	Primary Rotameter (gpm)	Secondary Dilution gph	Secondary Rotameter (gpm)	Peristaltic Pump gph	Max Pump Pressure psi
7746772	60-0.21TA	60	1	-	-	0.21	100 psi
7746773	60x2-0.71TA	60	1	60	1	0.71	100 psi
7746774	180x2-0.71TA	180	3	120	2	0.71	100 psi
7746775	180x2-1.67TA	180	3	120	2	1.67	25 psi
7746776	300x2-2.50TA	300	5	300	5	2.50	25 psi
7746777	300x2-3.54TA	300	5	300	5	3.54	25 psi

Dimensional Drawings

