

NEW ProMtrac Controller

Cooling Tower Controller



Cooling Tower controller with intuitive rotary interface provides simple menu navigation while offering flexibility and reliable control. The Start Up Wizard makes programming fast and easy. Comprehensive, pre-configured programming is also available at no additional cost using the latest innovation, Plug & Feed.

Features & Benefits

- LED Alarm status indicator
- Rotary interface with menu selectable push button keys
- Start Up Wizard for fast and easy programming
- Data logging with USB drive
- Browser command & control
- 4 Analog inputs with flexible offering:
 - 2 Conductivity inputs for cycle control
 - 1 pH or ORP input
 - 1 Fluorometer input with ppb control
- 3 Digital inputs:
 - Makeup water meter
 - Bleed water meter
 - One configurable contact set
- 5 Relays with LED indicators and customizable faceplate descriptions:
 - 1 standard powered solenoid or motorized ball valve
 - 4 configurable relays
 - LED indicators for system status
- Up to two 4-20 mA outputs
- User selectable thermal or mechanical flow switch
- Load fuse alarm



ProMtrac Controller

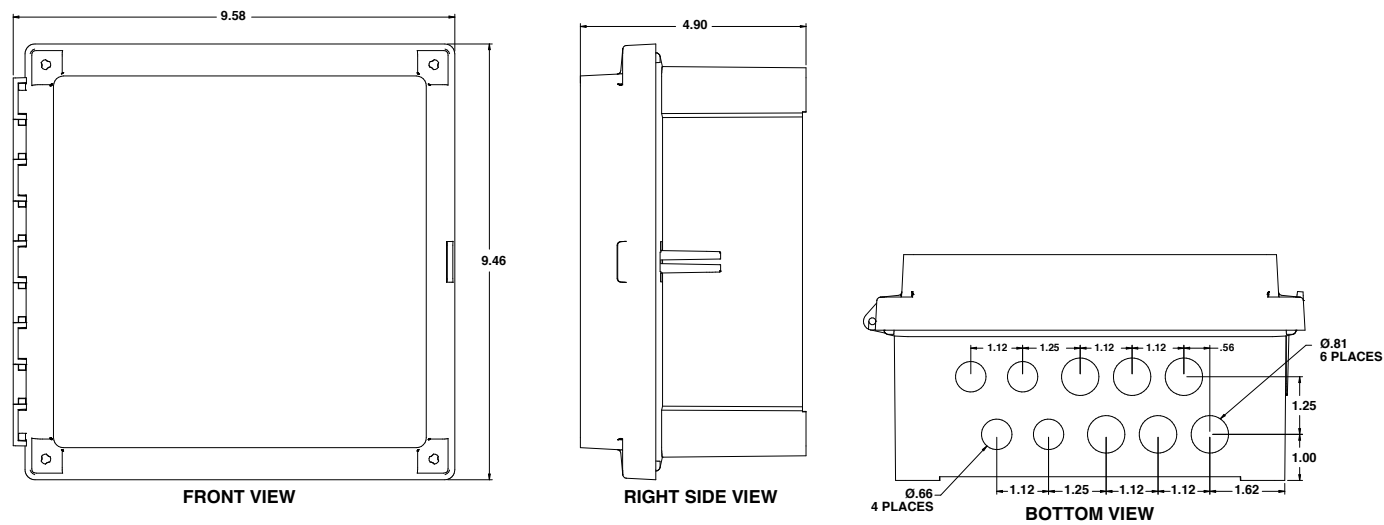
Identcode & Ordering Information

PRMT Version:																	
PRMT	A	Enclosure Type															
		0	Standard														
			pH/ ORP Sensor														
			0	None													
			1	pH													
			2	ORP													
			4-20mA Analog Input														
			0	None													
			1	One													
			2	Two (Only available if analog input selection = 0 or none)													
			Make-up Conductivity Sensor														
			0	None													
			1	One													
			Power Cord														
			0	None													
			1	US Standard 115 V													
			2	230 VAC North American Plug													
			Umbilical Outlets														
			0	None													
			1	Quad-Box 115 VAC													
			2	Four Outlet Cords 115 VAC													
			Expansion														
			0	None													
			Remote Communications														
			0	None													
			Accessories														
			0	None													
			Execution														
			0	Standard													
			Language														
			0	English													
			Approval														
			0	Standard													
PRMT	A	0	0	0	0	1	2	0	0	0	0	0	0	0			

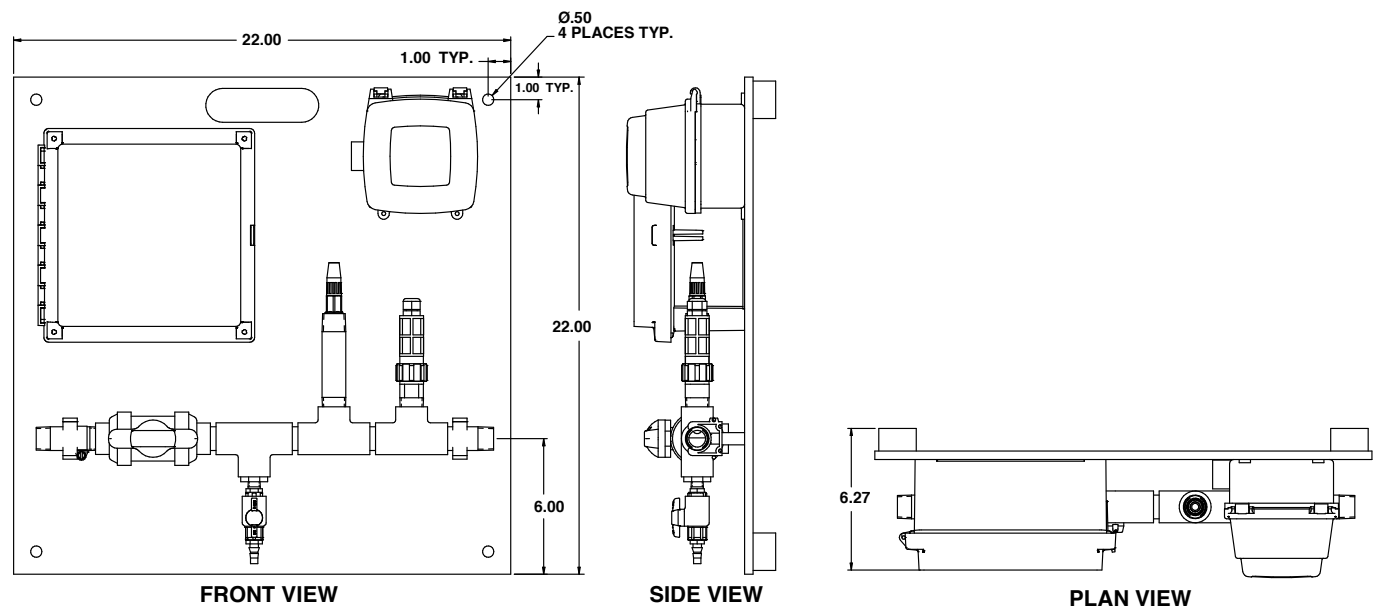
Spare Parts / Accessories	
Part Number	Description
7761529	Low pressure CTF conductivity/temperature/ flow sensor, 125 psi
7761533	High pressure CTF conductivity/temperature/ flow sensor, 300 psi
150094	ORP sensor (RHEP OI-SE)
741036	pH sensor (PHED 112 SE)
7500727	In-Line Fluorometer
7500850	Fuse

Drawings

ProMtrac Enclosure



ProMtrac Package



NEW ProMtrac Controller

Specifications

Inputs

Power:	115/230 VAC, 50-60HZ, 5 amp
Conductivity Sensor #1:	Tower conductivity sensor includes integral temperature and flow sensors
Conductivity Sensor #2:	Make-up water conductivity sensor includes integral temperature and flow sensors
pH/ORP Sensor:	ProMtrac can be configured with either a pH or ORP probe
Flow Meter #1:	Accepts paddlewheel pulse output flow sensor
Flow Meter #2:	Accepts paddlewheel pulse output flow sensor
4-20mA:	For use with loop powered fluorometer. ProMtrac has internal power supply for sensor.

Outputs

4 Mechanical Relays, Form A dry contact with optional 115/230 VAC, 5 Amp power available

1 Relay dedicated for bleed valve

(Note: Total load for all five relays fused at 5 Amp total. Motor driven pumps will require interposing starter.)

4-20mA, 300 Ohm resistive

Can be configured to represent conductivity, pH or ORP

USB Features

Controller configuration

Configuration file can be uploaded quickly and easily from memory stick

Operational Datalog:

- Signal values
- Relays status
- Analog value(s)
- Time stamp

Data easily imports into spreadsheet

Ethernet

10/100 Base T, TCP/IP Ethernet LAN HTML micro web server with user definable IP address

Mechanical

Enclosure:	Polycarbonate NEMA 4X (IP65)
Display:	4 x 20 character backlit liquid crystal
Shipping weight:	7 lbs (3 kg) (approximately)

Sensor manifold/backpanel option

Connections:	¾" NPTF
Temperature:	140°F (60°C)