

S1 BLACK
UV PROTECTED
POLYPROPYLENE/
POLYETHYLENE STAND

1/2" NPT
PRODUCT INLET

PLAN VIEW

1/2" O.D. TUBING
VENT TO TANK

500 mL PVC
CALIBRATION COLUMN

1/2" PVC/VITON NPT
BALL VALVE
4 TYP.

3.00

1.75

FRONT VIEW

1/2" NPT
PRODUCT OUTLET

1/2" O.D. X 1/4" I.D.
REINFORCED PVC TUBING
PUMP INLET AND OUTLET

PROVISIONS FOR OPTIONAL
MULTI FUNCTION VALVE
ORDERED SEPERATELY

GAMMA L SERIES METERING PUMP
FLOW RATE RANGE: .19 - 8.4 GPH
PRESSURE RANGE: 29 - 253 PSIG
PUMP SPECIFICATIONS TO BE DETERMINED
PER CUSTOMER REQUIREMENTS
ORDERED SEPERATELY

SIDE VIEW

3.44
33.75
30.00

PROVISIONS FOR
PULSATION DAMPENER
ORDERED SEPERATELY

ISOMETRIC VIEW

- NOTES:
- ALL PIPING AND FITTINGS SHALL BE 1/2" SCH. 80 PVC SOCKET WELD WITH VITON SEALS UNLESS OTHERWISE REQUIRED BY COMPONENTS.
 - ALL DIMENSIONS ARE IN INCHES.

0	05/24/04	FIRST ISSUE		GJS	
REV	DATE	DESCRIPTION		BY	APPD REV
REVISIONS					
CUSTOMER					
PROMINENT FLUID CONTROLS					
JOB No		7745346		PURCHASE ORDER No	
TITLE					
S1 WALL MOUNT BASIC PVC/VITON GENERAL ARRANGEMENT					
THIS DRAWING IS THE PROPERTY OF PROMINENT FLUID CONTROLS LTD. AND SHALL NOT BE COPIED OR TRANSFERRED WITHOUT THE WRITTEN CONSENT OF PROMINENT FLUID CONTROLS LTD.					
ENGINEERS SEAL		<div><div><div>ptc</div><div>ProMinent</div></div><div><div>ProMinent[®]</div><div>THE PROMINENT GROUP OF COMPANIES</div></div></div>			
		PITTSBURGH, PA USA		WWW.PROMINENT.CC	
		PROMINENT FLUID CONTROLS LTD. 490 SOUTHGATE DRIVE. GUELPH, ONTARIO, CANADA N1H 6J3 TEL. 519 836 5692 FAX. 519 836 5226		PROMINENT FLUID CONTROLS LTD. RIDC PARK WEST 136 INDUSTRY DRIVE, PITTSBURGH P.A., USA. 15275 TEL. 412 787 2484 FAX. 412 787 0704	
		DESIGNED GJS		APPROVED	
		DRAWN GJS		SCALE NTS	
		CHECKED DH		DATE 05/24/04	
DWG No				REV	PAGE
7745346-200				0	1/1

S1 BLACK
UV PROTECTED
POLYPROPYLENE/
POLYETHYLENE STAND

1/2" NPT
PRODUCT INLET

PLAN VIEW

1/2" O.D. TUBING
VENT TO TANK

500 mL PVC
CALIBRATION COLUMN

1/2" PVC/EPDM NPT
BALL VALVE
4 TYP.

3.00

1.75

FRONT VIEW

1/2" NPT
PRODUCT OUTLET

1/2" O.D. X 1/4" I.D.
REINFORCED PVC TUBING
PUMP INLET AND OUTLET

PROVISIONS FOR OPTIONAL
MULTI FUNCTION
ORDERED SEPERATELY

GAMMA L SERIES METERING PUMP
FLOW RATE RANGE: .19 - 8.4 GPH
PRESSURE RANGE: 29 - 253 PSIG
PUMP SPECIFICATIONS TO BE DETERMINED
PER CUSTOMER REQUIREMENTS
ORDERED SEPERATELY

SIDE VIEW

30.00

33.75

3.44

ISOMETRIC VIEW

PROVISIONS FOR
PULSATION DAMPENER
ORDERED SEPERATELY


NOTES:

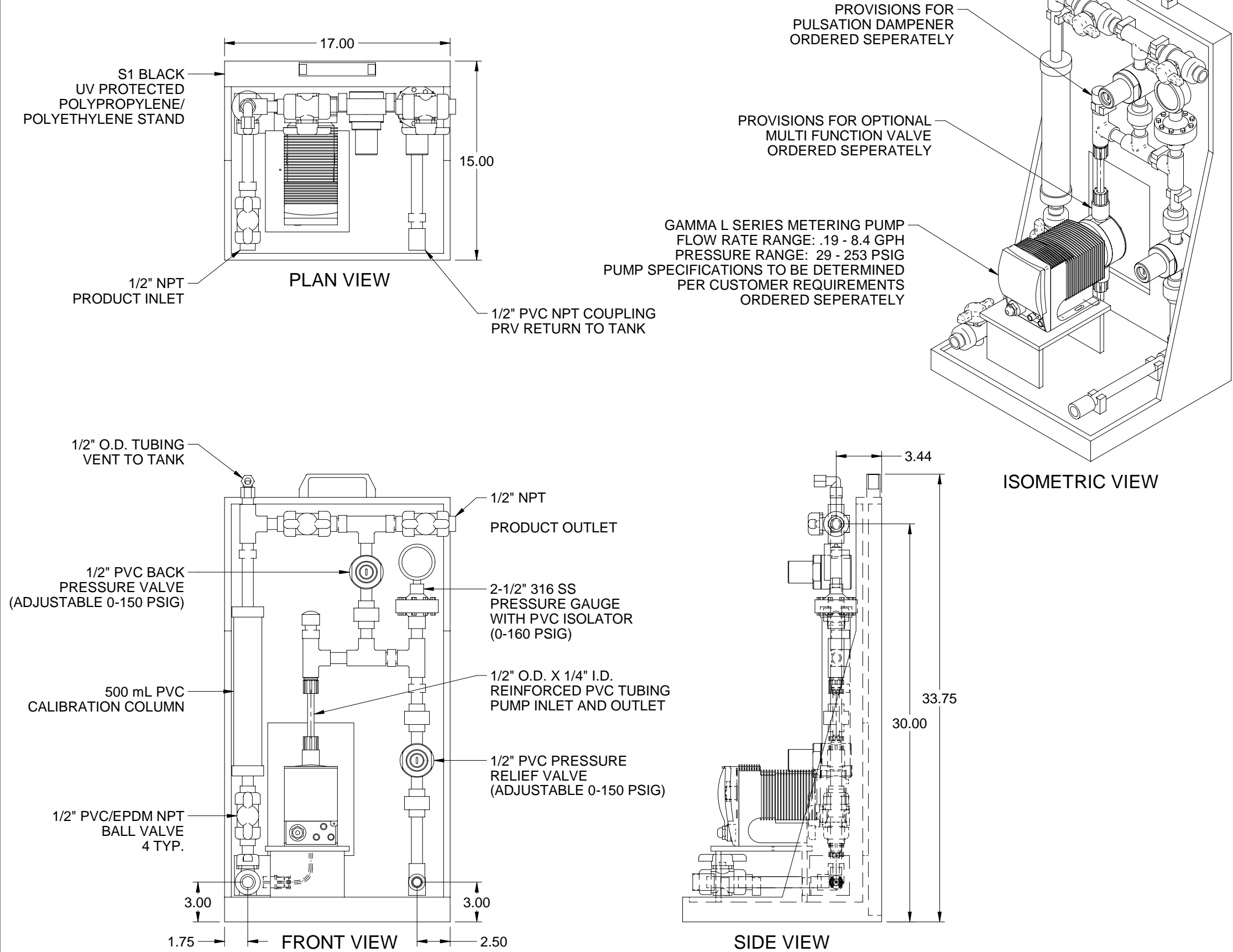
1. ALL PIPING AND FITTINGS SHALL BE 1/2" SCH. 80 PVC SOCKET WELD WITH EPDM SEALS UNLESS OTHERWISE REQUIRED BY COMPONENTS.
2. ALL DIMENSIONS ARE IN INCHES.

0	05/24/04	FIRST ISSUE		GJS	
REV	DATE	DESCRIPTION		BY	APPD/REV
REVISIONS					
CUSTOMER					
PROMINENT FLUID CONTROLS					
JOB No		7745347		PURCHASE ORDER No	
TITLE					
S1 WALL MOUNT BASIC PVC/EPDM GENERAL ARRANGEMENT					
THIS DRAWING IS THE PROPERTY OF PROMINENT FLUID CONTROLS LTD. AND SHALL NOT BE COPIED OR TRANSFERRED WITHOUT THE WRITTEN CONSENT OF PROMINENT FLUID CONTROLS LTD.					
ENGINEERS SEAL		<div><div><div><p>ptc</p><p>ProMinent</p></div><div><div>ProMinent[®]</div><div>THE PROMINENT GROUP OF COMPANIES</div></div></div></div>			
		PITTSBURGH, PA USA		WWW.PROMINENT.CC	
		PROMINENT FLUID CONTROLS LTD. 490 SOUTHGATE DRIVE. GUELPH, ONTARIO, CANADA N1H 6J3 TEL. 519 836 5692 FAX. 519 836 5226		PROMINENT FLUID CONTROLS LTD. RIDC PARK WEST 136 INDUSTRY DRIVE, PITTSBURGH P.A., USA. 15275 TEL. 412 787 2484 FAX. 412 787 0704	
		DESIGNED	GJS	APPROVED	
		DRAWN	GJS	SCALE NTS	
		CHECKED	DH	DATE 05/24/04	
DWG No				REV	PAGE
7745347-200				0	1/1



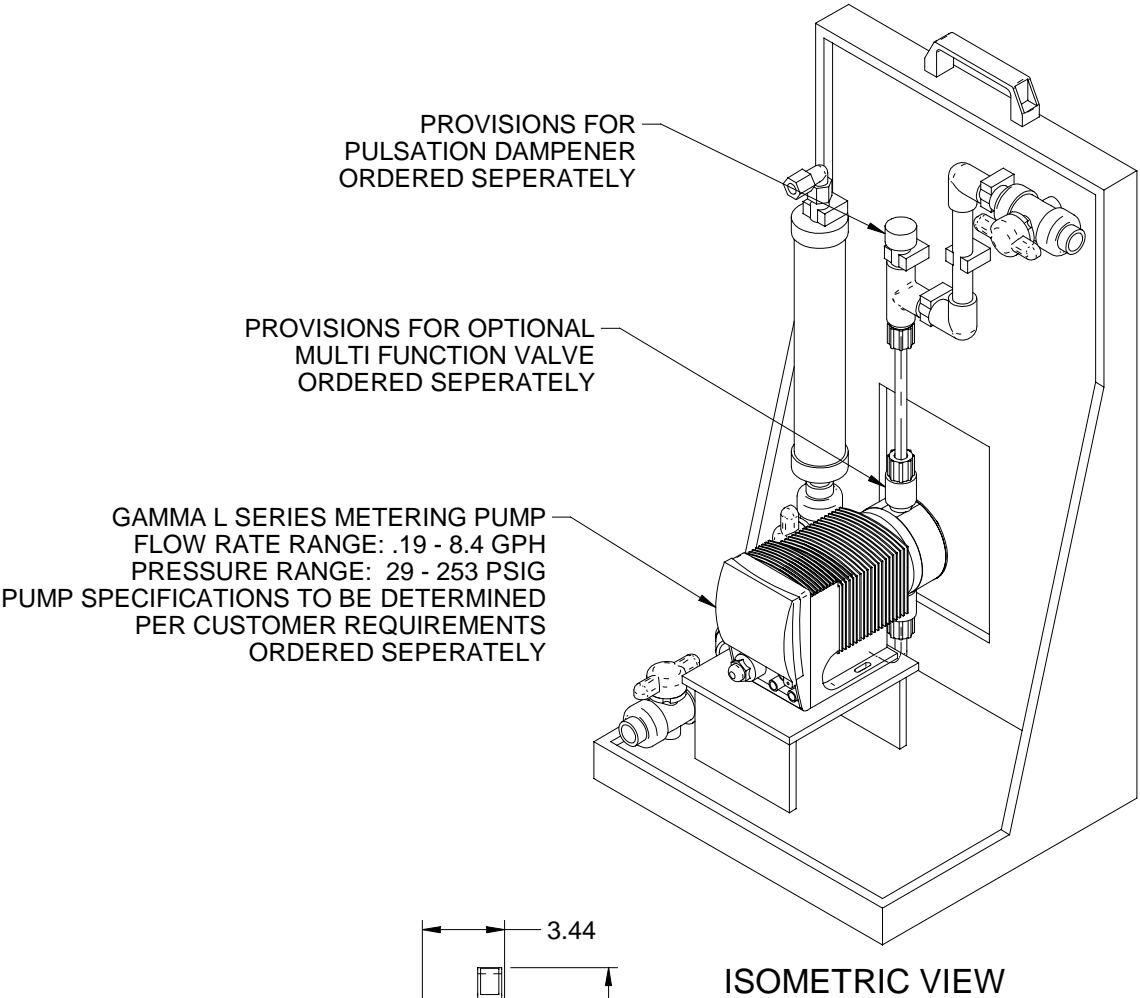
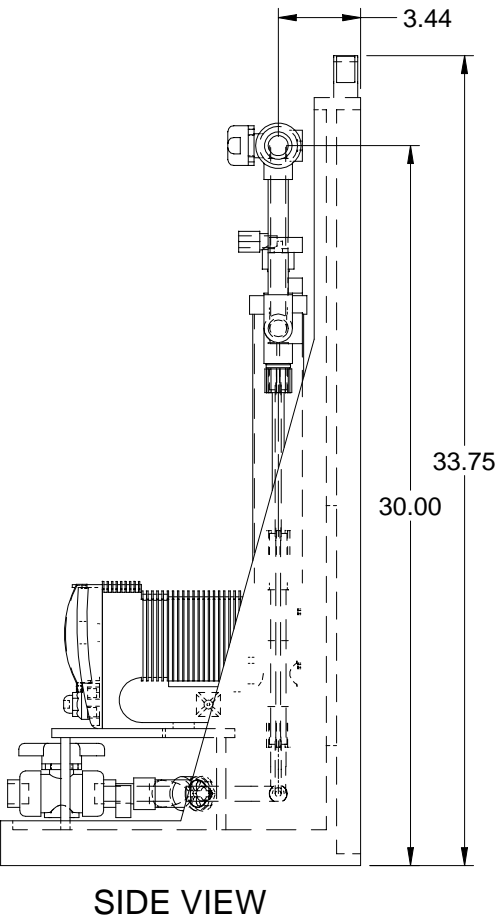
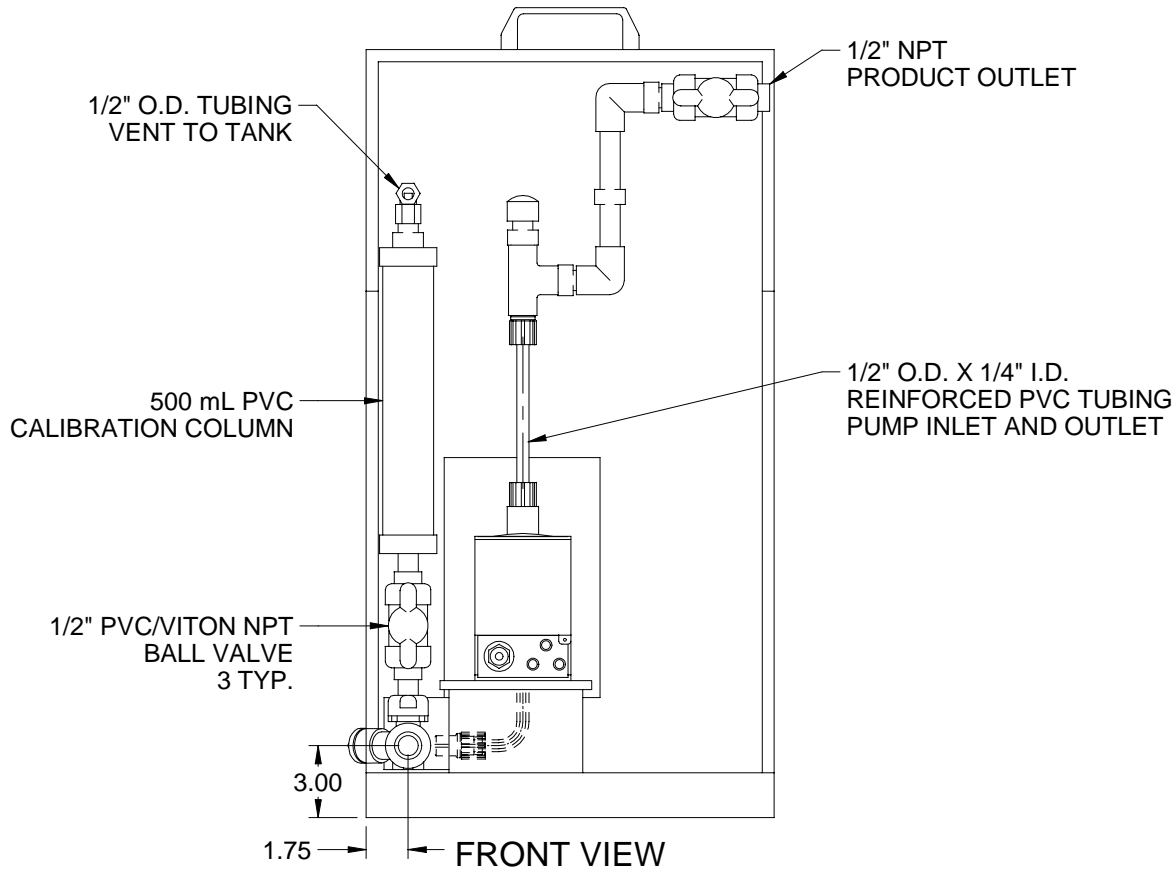
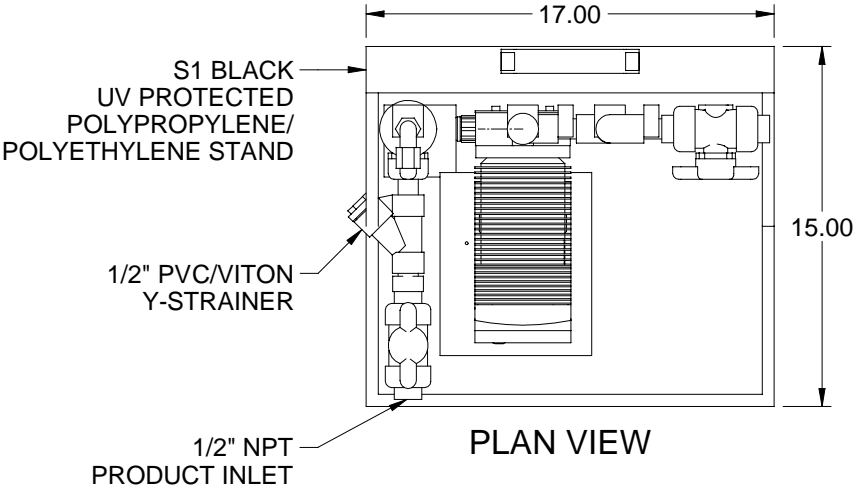
1. ALL PIPING AND FITTINGS SHALL BE 1/2" SCH. 80 PVC SOCKET WELD WITH VITON SEALS UNLESS OTHERWISE REQUIRED BY COMPONENTS.
2. ALL DIMENSIONS SHOWN FOR REFERENCE ONLY AND ARE IN INCHES.

0	05/24/04	FIRST ISSUE	GJS		
REV	DATE	DESCRIPTION	BY	APPD	REVD
REVISIONS					
CUSTOMER					
PROMINENT FLUID CONTROLS					
JOB No		7745348	PURCHASE ORDER No		
TITLE		S1 WALL MOUNT FULL PVC/VITON GENERAL ARRANGEMENT			
THIS DRAWING IS THE PROPERTY OF PROMINENT FLUID CONTROLS LTD. AND SHALL NOT BE COPIED OR TRANSMITTED WITHOUT THE WRITTEN CONSENT OF PROMINENT FLUID CONTROLS LTD.					
ENGINEERS SEAL					
				ProMinent[®] THE PROMINENT GROUP OF COMPANIES	
		PITTSBURGH, PA USA		WWW.PROMINENT.CC	
		PROMINENT FLUID CONTROLS LTD. 490 SOUTHGATE DRIVE. GUELPH, ONTARIO, CANADA N1H 6J3 TEL. 519 836 5692 FAX. 519 836 5226		PROMINENT FLUID CONTROLS LTD. RIDC PARK WEST 136 INDUSTRY DRIVE, PITTSBURGH P.A., USA. 15275 TEL. 412 787 2484 FAX. 412 787 0704	
		DESIGNED GJS		APPROVED	
		DRAWN GJS		SCALE NTS	
CHECKED DH		DATE 05/24/04			
DWG No			REV	PAGE	
7745348-200			0	1/1	



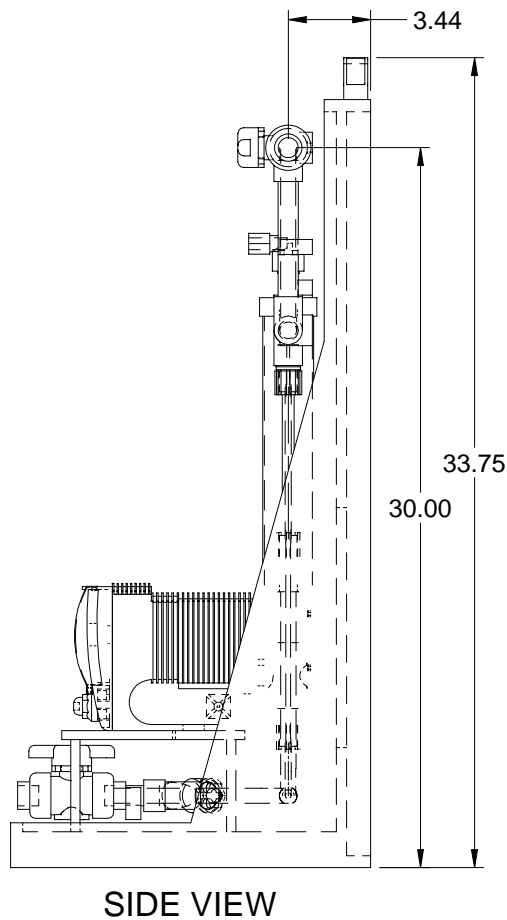
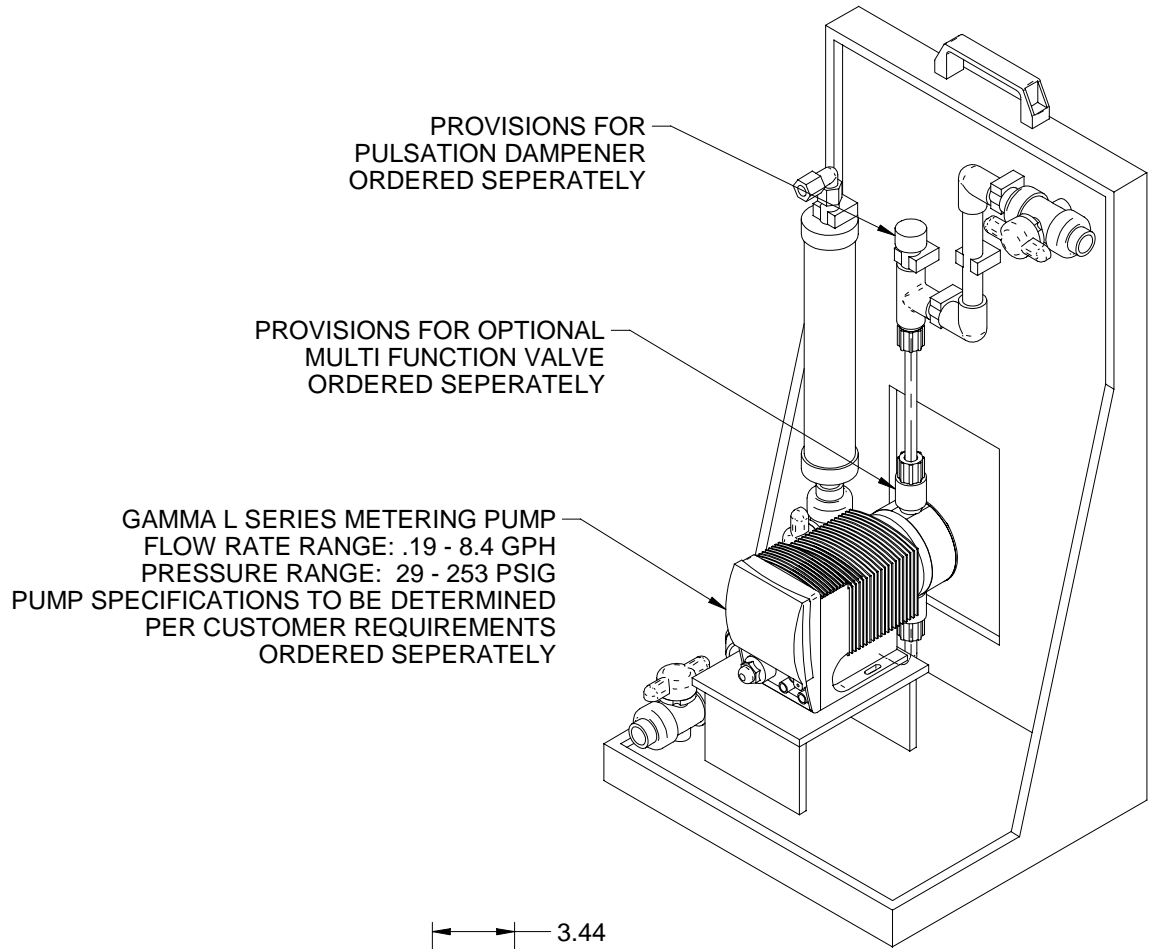
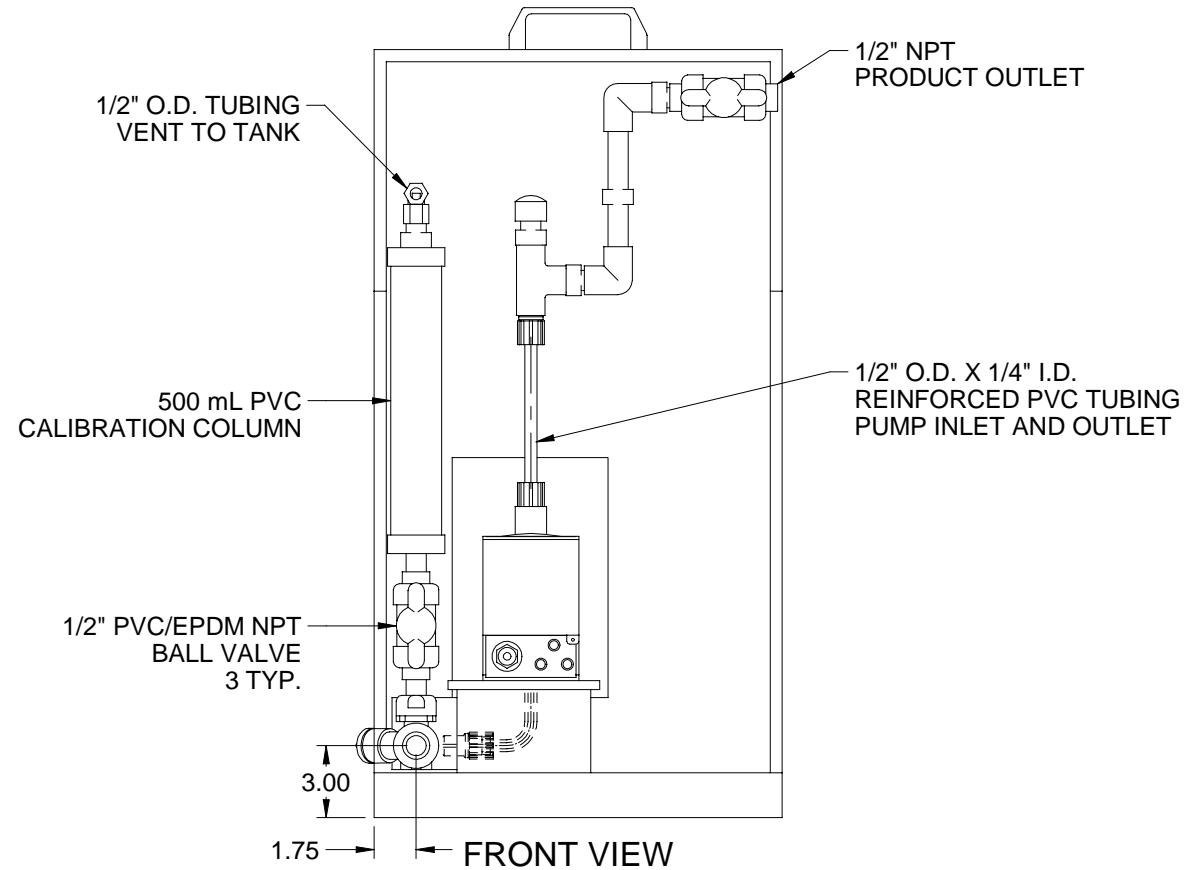
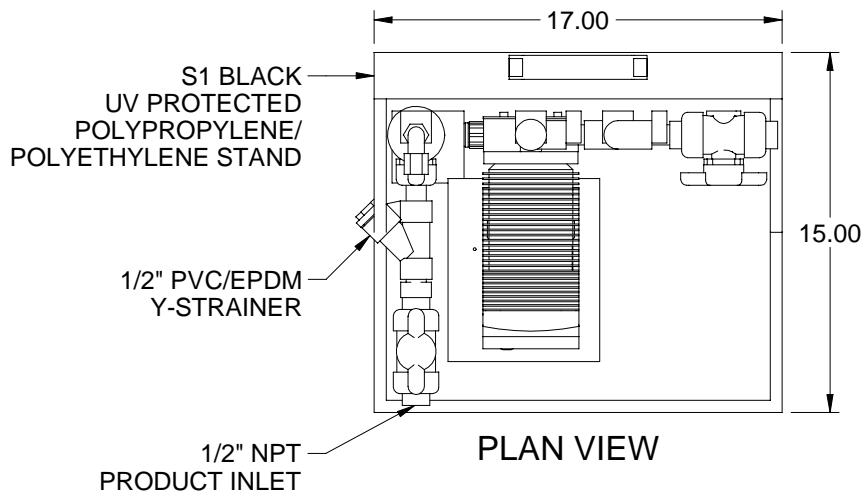
- NOTES:
- ALL PIPING AND FITTINGS SHALL BE 1/2" SCH. 80 PVC SOCKET WELD WITH EPDM SEALS UNLESS OTHERWISE REQUIRED BY COMPONENTS.
 - ALL DIMENSIONS ARE IN INCHES.

0	05/24/04	FIRST ISSUE	GJS		
REV	DATE	DESCRIPTION	BY	APPD	REVD
REVISIONS					
CUSTOMER					
PROMINENT FLUID CONTROLS					
JOB No		7745349	PURCHASE ORDER No		
TITLE		S1 WALL MOUNT FULL PVC/EPDM GENERAL ARRANGEMENT			
THIS DRAWING IS THE PROPERTY OF PROMINENT FLUID CONTROLS LTD. AND SHALL NOT BE COPIED OR TRANSFERRED WITHOUT THE WRITTEN CONSENT OF PROMINENT FLUID CONTROLS LTD.					
ENGINEERS SEAL		<div><div><div><div></div><div>pfc</div><div>ProMinent</div></div><div><div>ProMinent®</div><div>THE PROMINENT GROUP OF COMPANIES</div></div></div><div><div>PITTSBURGH, PA USA</div><div>WWW.PROMINENT.CC</div><div><div>PROMINENT FLUID CONTROLS LTD. 490 SOUTHGATE DRIVE. GUELPH, ONTARIO, CANADA N1H 6J3 TEL. 519 836 5692FAX. 519 836 5226</div><div><div>PROMINENT FLUID CONTROLS LTD. RIDC PARK WEST 136 INDUSTRY DRIVE, PITTSBURGH P.A., USA. 15275 TEL. 412 787 2484FAX. 412 787 0704</div></div></div><div><div>DESIGNEDGJS</div><div>DRAWNGJS</div><div>CHECKEDDH</div></div><div><div>APPROVED</div><div>SCALENTS</div><div>DATE05/24/04</div></div></div></div>			
DWG No			REV	PAGE	
7745349-200			0	1/1	



- NOTES:
1. ALL PIPING AND FITTINGS SHALL BE 1/2" SCH. 80 PVC SOCKET WELD WITH VITON SEALS UNLESS OTHERWISE REQUIRED BY COMPONENTS.
 2. ALL DIMENSIONS ARE IN INCHES.

0	05/24/04	FIRST ISSUE		GJS	
REV	DATE	DESCRIPTION		BY	APPD/REV/D
REVISIONS					
CUSTOMER					
PROMINENT FLUID CONTROLS					
JOB No		7745350		PURCHASE ORDER No	
TITLE					
S1 FLOOR MOUNT BASIC PVC/VITON GENERAL ARRANGEMENT					
THIS DRAWING IS THE PROPERTY OF PROMINENT FLUID CONTROLS LTD. AND SHALL NOT BE COPIED OR TRANSFERRED WITHOUT THE WRITTEN CONSENT OF PROMINENT FLUID CONTROLS LTD.					
ENGINEERS SEAL		<div><div><div><div></div><div></div></div><div><div></div><div></div></div></div><div><div>ProMinent[®]</div><div>THE PROMINENT GROUP OF COMPANIES</div></div></div>			
		PITTSBURGH, PA USA		WWW.PROMINENT.CC	
		PROMINENT FLUID CONTROLS LTD. 490 SOUTHGATE DRIVE. GUELPH, ONTARIO, CANADA N1H 6J3 TEL. 519 836 5692 FAX. 519 836 5226		PROMINENT FLUID CONTROLS LTD. RIDC PARK WEST 136 INDUSTRY DRIVE, PITTSBURGH P.A., USA. 15275 TEL. 412 787 2484 FAX. 412 787 0704	
		DESIGNED GJS		APPROVED	
		DRAWN GJS		SCALE NTS	
		CHECKED DH		DATE 05/24/04	
DWG No				REV	PAGE
7745350-200				0	1/1

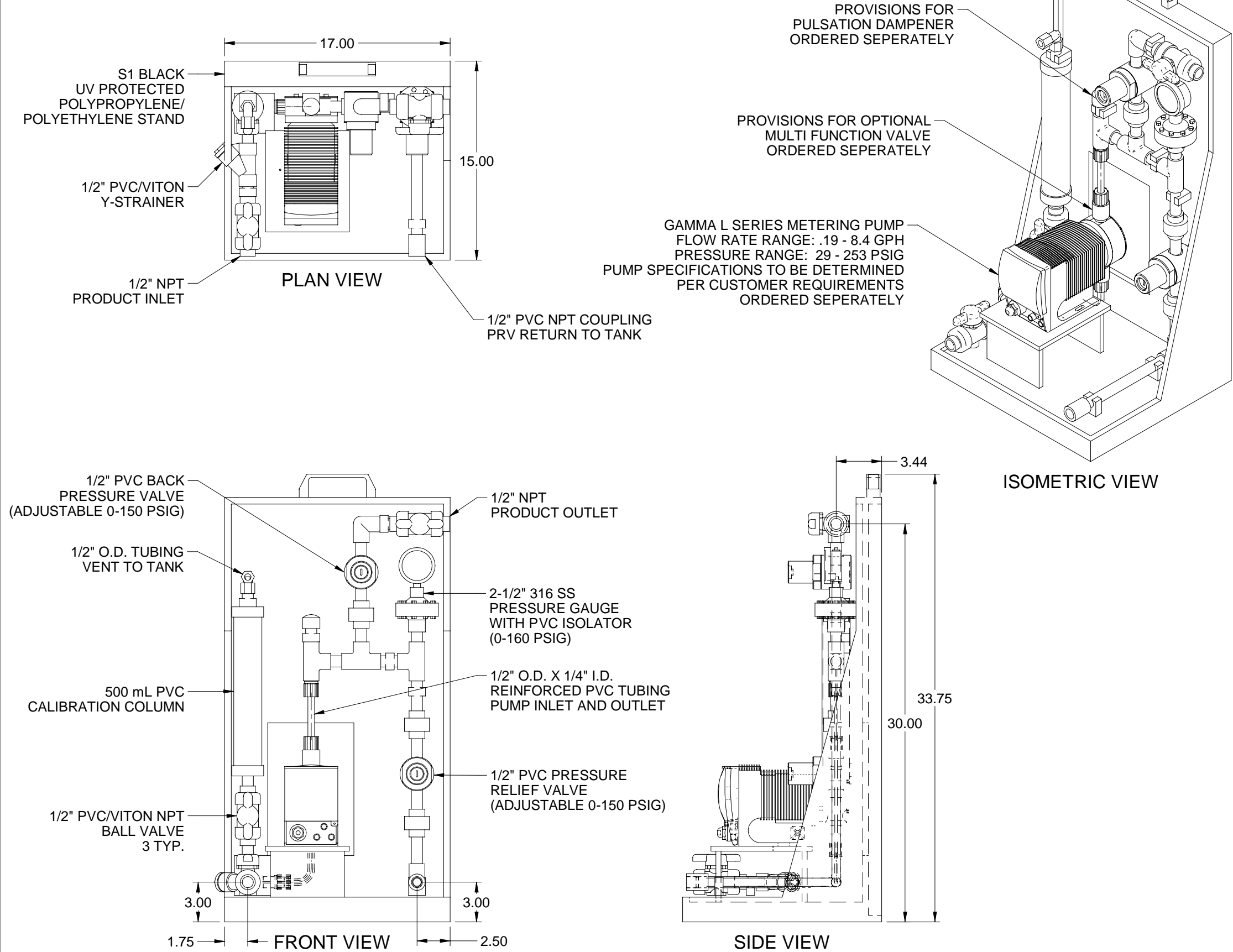


ISOMETRIC VIEW

NOTES:

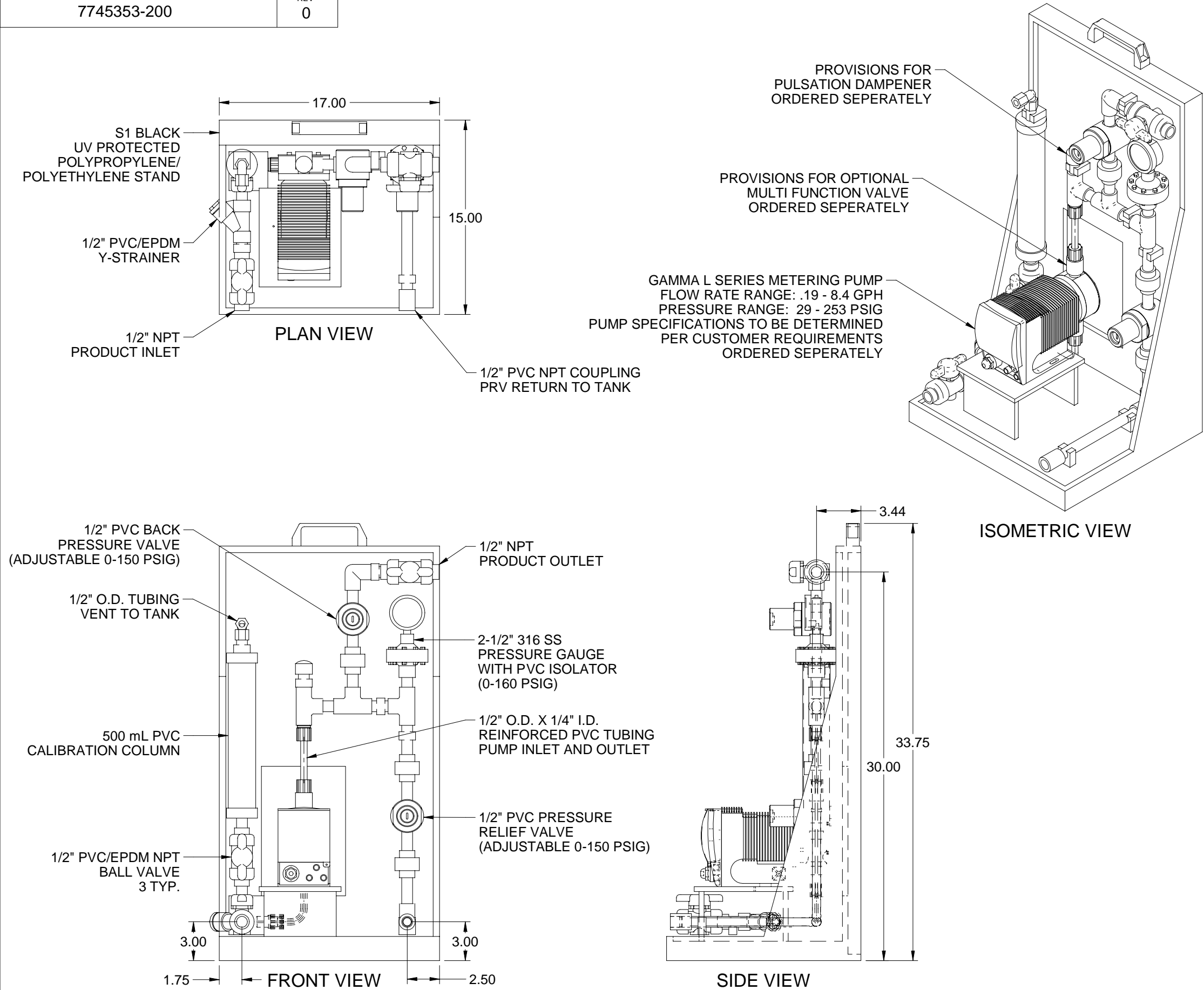
1. ALL PIPING AND FITTINGS SHALL BE 1/2" SCH. 80 PVC SOCKET WELD WITH EPDM SEALS UNLESS OTHERWISE REQUIRED BY COMPONENTS.
2. ALL DIMENSIONS ARE IN INCHES.

0	05/24/04	FIRST ISSUE		GJS													
REV	DATE	DESCRIPTION		BY	APPD/REV												
REVISIONS																	
CUSTOMER																	
PROMINENT FLUID CONTROLS																	
JOB No		7745351		PURCHASE ORDER No													
TITLE																	
S1 FLOOR MOUNT BASIC PVC/EPDM GENERAL ARRANGEMENT																	
THIS DRAWING IS THE PROPERTY OF PROMINENT FLUID CONTROLS LTD. AND SHALL NOT BE COPIED OR TRANSFERRED WITHOUT THE WRITTEN CONSENT OF PROMINENT FLUID CONTROLS LTD.																	
ENGINEERS SEAL		<div><div><div><div></div><div>pfc</div><div>ProMinent</div></div><div><div>ProMinent[®]</div><div>THE PROMINENT GROUP OF COMPANIES</div></div></div><div><div>PITTSBURGH, PA USA</div><div>WWW.PROMINENT.CC</div><div><div>PROMINENT FLUID CONTROLS LTD. 490 SOUTHGATE DRIVE. GUELPH, ONTARIO, CANADA N1H 6J3 TEL. 519 836 5692 FAX. 519 836 5226</div><div><div>PROMINENT FLUID CONTROLS LTD. RIDC PARK WEST 136 INDUSTRY DRIVE, PITTSBURGH P.A., USA. 15275 TEL. 412 787 2484 FAX. 412 787 0704</div></div></div><table><tr><td>DESIGNED</td><td>GJS</td><td>APPROVED</td><td></td></tr><tr><td>DRAWN</td><td>GJS</td><td>SCALE</td><td>NTS</td></tr><tr><td>CHECKED</td><td>DH</td><td>DATE</td><td>05/24/04</td></tr></table></div></div>				DESIGNED	GJS	APPROVED		DRAWN	GJS	SCALE	NTS	CHECKED	DH	DATE	05/24/04
DESIGNED	GJS	APPROVED															
DRAWN	GJS	SCALE	NTS														
CHECKED	DH	DATE	05/24/04														
DWG No		7745351-200		REV 0	PAGE 1/1												



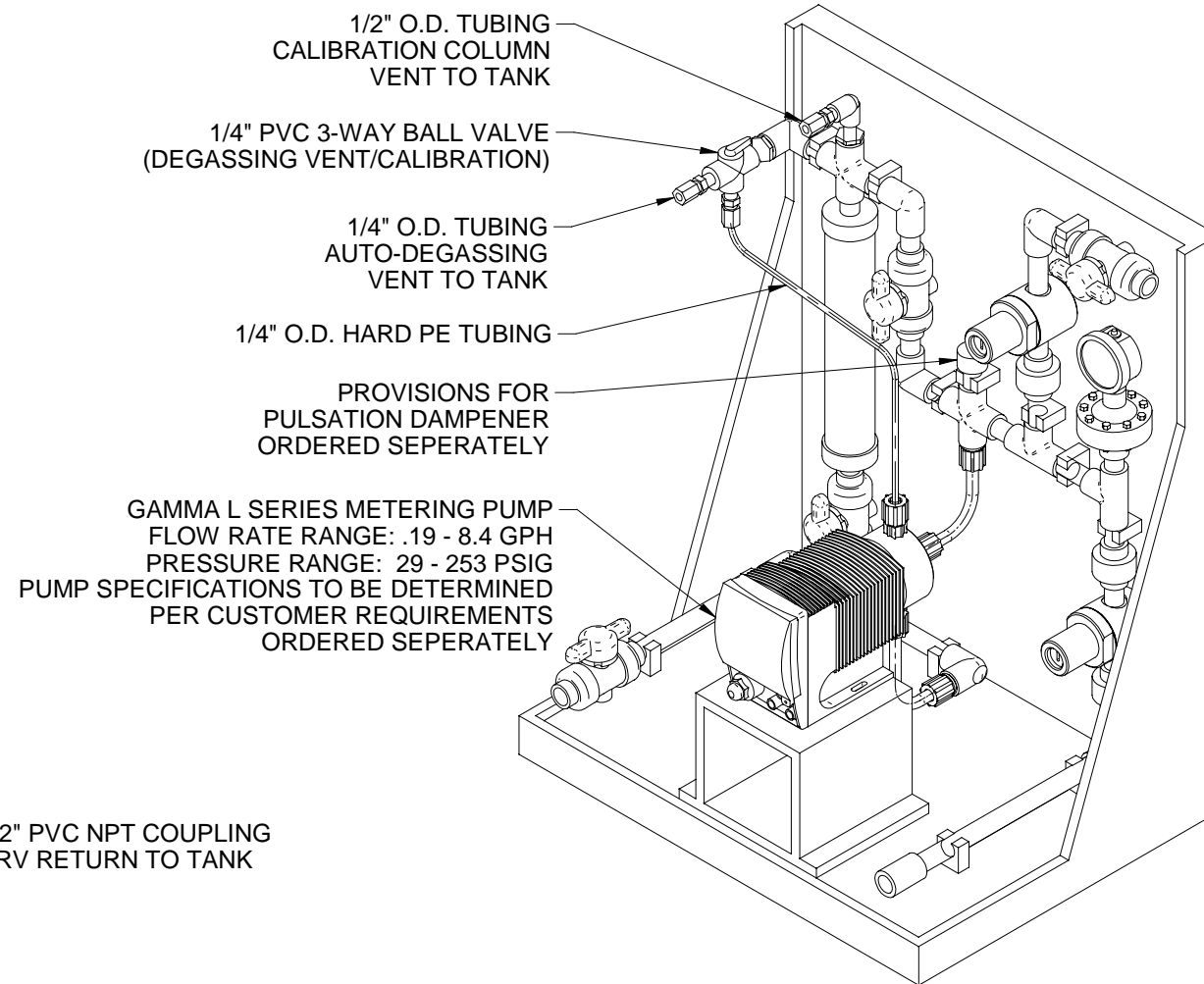
- NOTES:
- ALL PIPING AND FITTINGS SHALL BE 1/2" SCH. 80 PVC SOCKET WELD WITH VITON SEALS UNLESS OTHERWISE REQUIRED BY COMPONENTS.
 - ALL DIMENSIONS ARE IN INCHES.

0	05/24/04	FIRST ISSUE	GJS		
REV	DATE	DESCRIPTION	BY	APPD	REVD
REVISIONS					
CUSTOMER					
PROMINENT FLUID CONTROLS					
JOB No		7745352	PURCHASE ORDER No		
TITLE					
S1 FLOOR MOUNT FULL PVC/VITON GENERAL ARRANGEMENT					
THIS DRAWING IS THE PROPERTY OF PROMINENT FLUID CONTROLS LTD. AND SHALL NOT BE COPIED OR TRANSFERRED WITHOUT THE WRITTEN CONSENT OF PROMINENT FLUID CONTROLS LTD.					
ENGINEERS SEAL		<div><div><div><div></div><div>pfc</div><div>ProMinent</div></div><div><div>ProMinent®</div><div>THE PROMINENT GROUP OF COMPANIES</div></div></div><div><div>PITTSBURGH, PA USA</div><div>WWW.PROMINENT.CC</div></div><div><div>PROMINENT FLUID CONTROLS LTD. 490 SOUTHGATE DRIVE. GUELPH, ONTARIO, CANADA N1H 6J3 TEL. 519 836 5692 FAX. 519 836 5226</div><div>PROMINENT FLUID CONTROLS LTD. RIDC PARK WEST 136 INDUSTRY DRIVE, PITTSBURGH P.A., USA. 15275 TEL. 412 787 2484 FAX. 412 787 0704</div></div><div><div>DESIGNED</div><div>GJS</div><div>APPROVED</div></div><div><div>DRAWN</div><div>GJS</div><div>SCALE</div><div>NTS</div></div><div><div>CHECKED</div><div>DH</div><div>DATE</div><div>05/24/04</div></div></div>			
DWG No			REV	PAGE	
7745352-200			0	1/1	

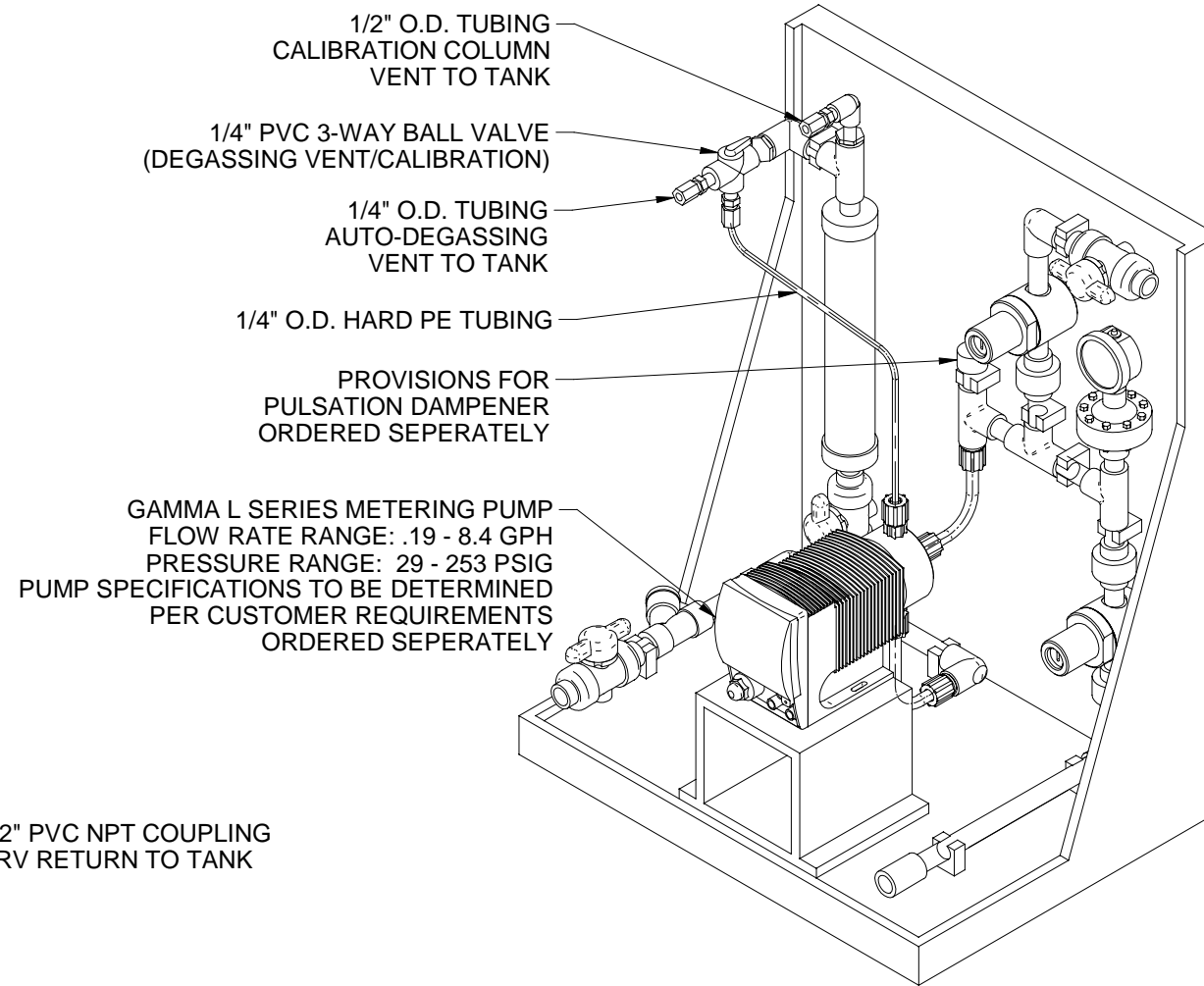


- NOTES:
- ALL PIPING AND FITTINGS SHALL BE 1/2" SCH. 80 PVC SOCKET WELD WITH EPDM SEALS UNLESS OTHERWISE REQUIRED BY COMPONENTS.
 - ALL DIMENSIONS ARE IN INCHES.

0	05/24/04	FIRST ISSUE	GJS		
REV	DATE	DESCRIPTION	BY	APPD	REVD
REVISIONS					
CUSTOMER					
PROMINENT FLUID CONTROLS					
JOB No		7745353	PURCHASE ORDER No		
TITLE					
S1 FLOOR MOUNT FULL PVC/EPDM GENERAL ARRANGEMENT					
THIS DRAWING IS THE PROPERTY OF PROMINENT FLUID CONTROLS LTD. AND SHALL NOT BE COPIED OR TRANSFERRED WITHOUT THE WRITTEN CONSENT OF PROMINENT FLUID CONTROLS LTD.					
ENGINEERS SEAL		<div><div><div>ptc</div><div>ProMinent</div></div><div><div>ProMinent[®]</div><div>THE PROMINENT GROUP OF COMPANIES</div></div></div>			
		PITTSBURGH, PA USA		WWW.PROMINENT.CC	
		PROMINENT FLUID CONTROLS LTD. 490 SOUTHGATE DRIVE. GUELPH, ONTARIO, CANADA N1H 6J3 TEL. 519 836 5692 FAX. 519 836 5226		PROMINENT FLUID CONTROLS LTD. RIDC PARK WEST 136 INDUSTRY DRIVE, PITTSBURGH P.A., USA. 15275 TEL. 412 787 2484 FAX. 412 787 0704	
		DESIGNED GJS		APPROVED	
		DRAWN GJS		SCALE NTS	
		CHECKED DH		DATE 05/24/04	
DWG No			REV		PAGE
7745353-200			0		1/1



DWG No	7745131-200	REV	A	PAGE	1/1
--------	-------------	-----	---	------	-----



DWG No	7745132-200	REV	A	PAGE	1/1
--------	-------------	-----	---	------	-----