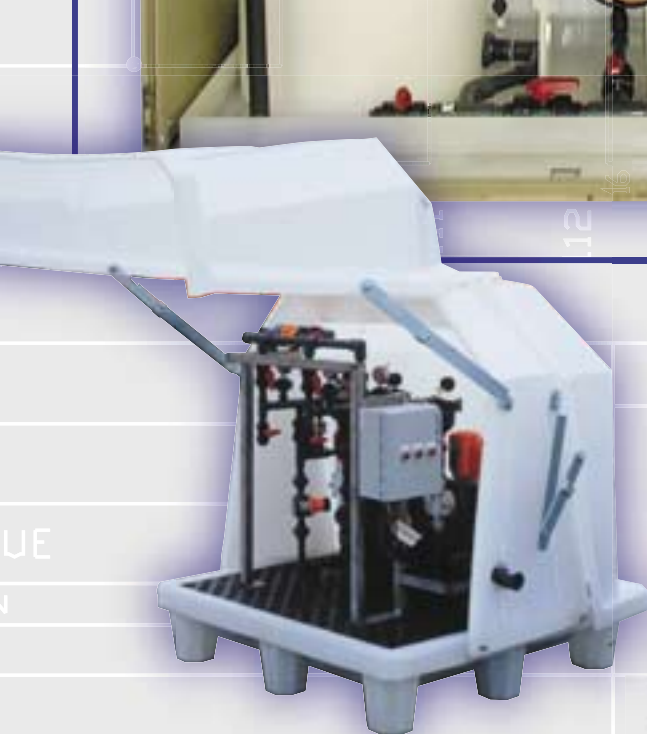


ENGINEERED CHEMICAL METERING & AUTOMATED CONTROL SYSTEMS



Prominent[®]
Pro

PROM

THE PROMINENT GROUP

ROCHESTER, PA

CO. LTD. PROMINENT

IND. PA

55 IND

PITTSBURGH

518-834-5246 TEL: 412

ProMinent

**THE NATURAL CHOICE FOR EXPERT APPLICATION OF
METERING PUMPS AND CONTROLLERS**

Quality

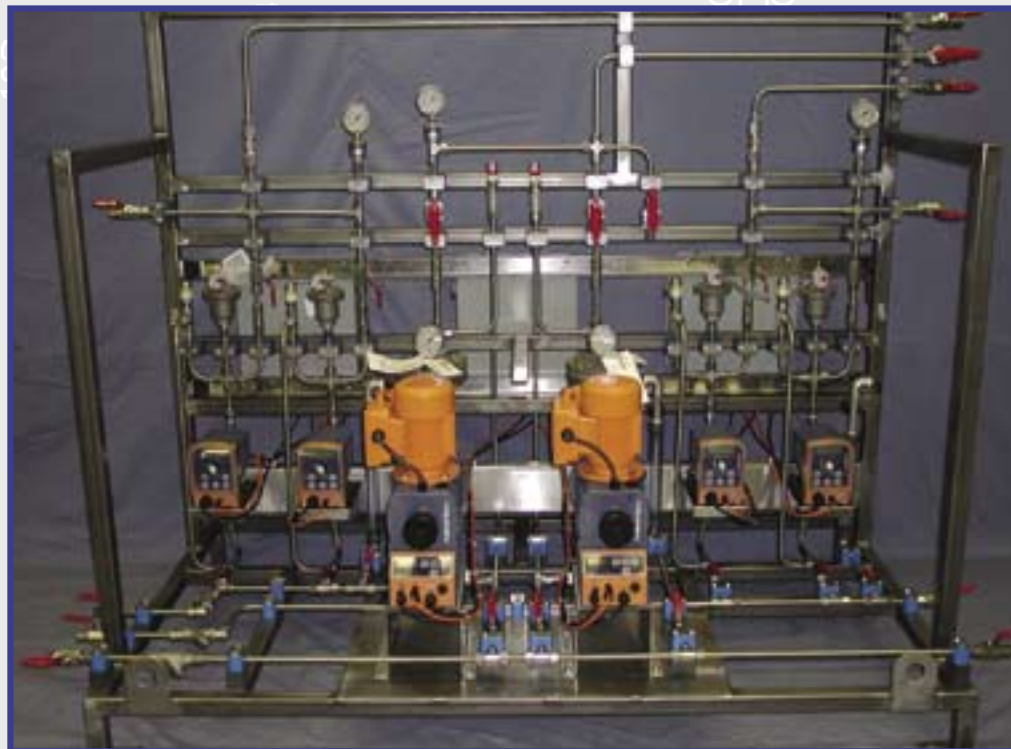
ProMinent has over 40 years of experience in all major markets:

- Municipal
- Chemical Vendors
- Water Treatment OEM
- Food Processing
- Pulp and Paper
- Petroleum and Refining

Back-up

Our qualified team includes:

- Engineers
- Designers (mechanical, electrical and control)
- Systems Production/ Assembly Crew
- Quality Assurance Managers
- Startup/ Commissioning Staff



TITLE

ACID FEED CONTROLLER W/SCR
WIRING SCHEMATIC

Precision

ProMinent began producing reliable equipment for chemical metering, process control and measurement in 1960. Who better qualifies to provide you with integrated systems?

Whether you are renovating, conforming to regulations or redesigning the process; ProMinent offers cost-effective, innovative, adaptable, and safe solutions.



ProMinent®

2000600119-301

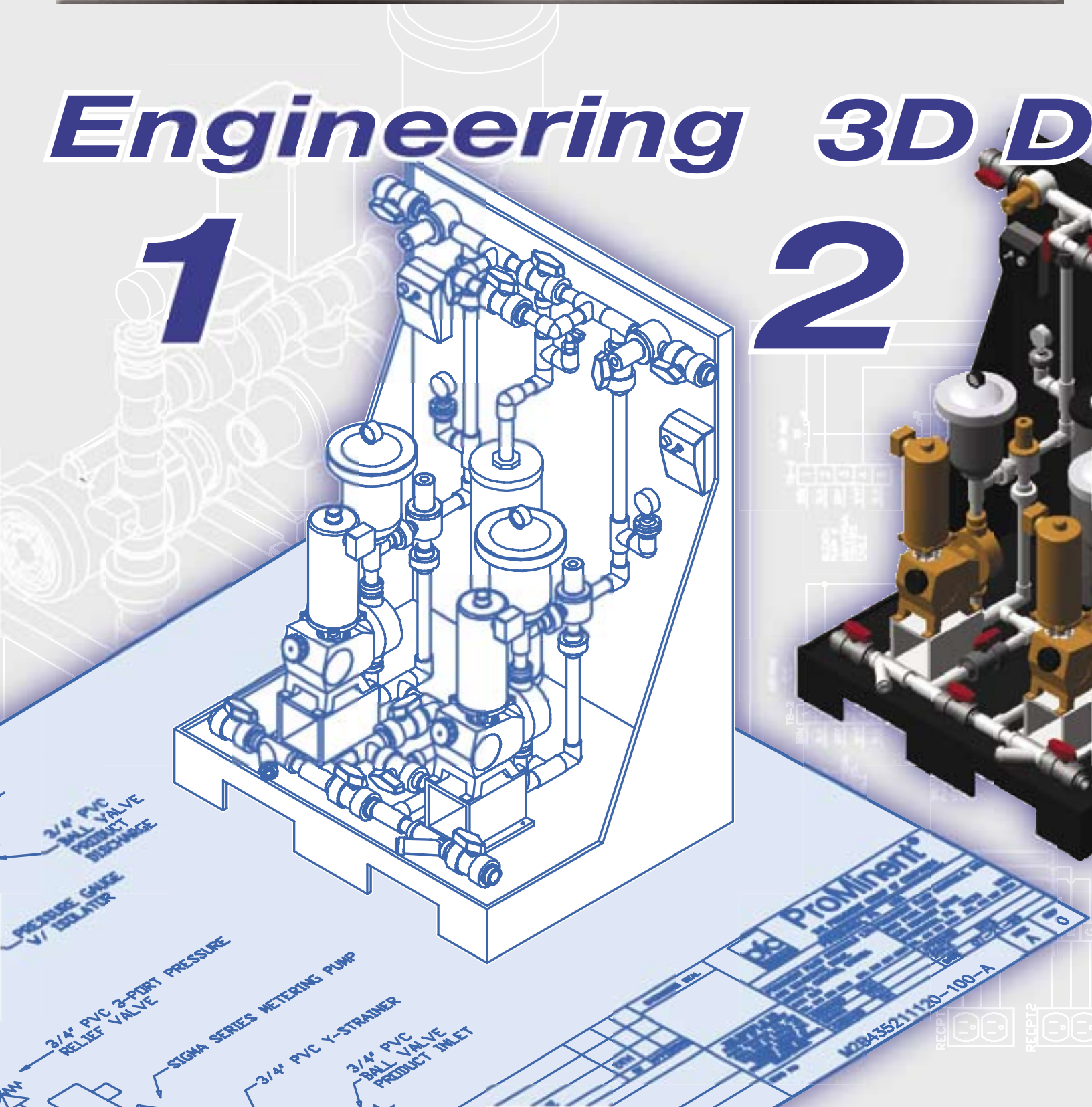
ProMinent Expertise

METERING, CONTROL & AUTOMATION, COMBINED
WITH SYSTEMS CAPABILITIES

Engineering 3D D

1

2



Assurance and Reassurance

Application, analysis, technical consultation and problem solving...

Combined expertise and experience enables the development of a system customized to meet even the most stringent specifications.

Automated 2D and 3D modeling, quality control testing and daily inspections are fundamental throughout all critical production phases.

To guarantee optimum product integrity, all assembly and testing is conducted at the ProMinent facilities.

Design Application 3



ProMinent®

Series: Motor-Driven Dual Pump Package (for Vario, Sigma, and Meta Chemical Metering Pumps)

Pipeline Size	
A	1/2"
B	3/4"
C	1"

Stand Assembly Type	
1	SS (58"x36"x27")
2	PP or PE (60"x44"x34.5"), UV protected, black
S	Special Order

Ball Valve & Piping Assembly Type with PRV**				
	Valve	Seat/Seal	Piping	Connection
0	None	None	None	None
1	PVC	EPDM	PVC	Socket weld
2	PVC	EPDM	PVC	Threaded
3	PVC	Viton®	PVC	Socket weld
4	PVC	Viton®	PVC	Threaded
5	SS	PTFE	SS	Threaded
6	PVDF	Viton®	PVDF	Fusion weld
7	PP	EPDM	PP	Fusion weld
8	PP	Viton®	PP	Fusion weld
9	CPVC	Viton®	CPVC	Socket weld
S	Special Order			

* PRV (pressure relief valve).
 †† These options include two items per system.

** Pressure gauge and isolator are recommended when specifying a pulsation dampener and/or backpressure valve.

Viton® and HYPALON® are registered trademarks of Dupont Dow Elastomers.

Calibration Column	
0	None
1	2000 mL PVC
2	2000 mL PP
3	2000 mL SS/glass
4	2000 mL PVDF/glass
5	4000 mL PVC
6	4000 mL PP
7	4000 mL SS/glass
8	4000 mL PVDF/glass
S	Special Order

Self Filling Calibration Option		
Valve	Seat/Seal	Piping
0	None	None
1	PVC	EPDM
2	PVC	Viton®
3	SS	PTFE
4	PVDF	Viton®
5	PP	EPDM
6	PP	Viton®
7	CPVC	Viton®
S	Special Order	

†† Backpressure Valve	
0	None
1	PVC
2	PP
3	PVDF
4	SS
5	CPVC
S	Special Order

Y-Type Sediment Strainer	
0	None
1	PVC
2	SS
3	PP
4	CPVC
S	Special Order

†† Pulsation Dampener		
	mL	cu. in.
0	None	
1	PVC/Viton®	1393 85
2	SS/PTFE	1150 70
3	PVDF/PTFE	1150 70
4	PP/EPDM	1393 85
5	PVC/Viton®	2868 175
6	SS/PTFE	2048 125
7	PVDF/PTFE	2048 125
8	PP/EPDM	2868 175
9	PVC/HYPALON®	1393 85
S	PVC/HYPALON®	2868 175
S	Special Order	

†† Pressure Gauge**	
0	None
1	2" SS w/ PVDF isolator
2	2" SS w/ PVC isolator
3	2" SS w/ SS isolator
4	2" SS w/ PP isolator
5	2" gauge only (w/o isolator)
6	2" SS w/CPVC isolator
S	Special Order

†† Flow Monitor	
0	None
1	Type III, PVC, w/bypass Assy.
2	Type III, PP, w/bypass Assy.
3	SS flow sensor w/flow monitor
S	Special Order
Options 1 & 2 are for control version pumps only	

ProMinent's standard approach provides customer satisfaction with simple, quick and cost effective means.

Metering systems are predesigned, yet custom built. Choose from prespecified materials and accessories or consult with our engineers for the package and metering pump designed to meet your application needs.

It couldn't be easier!

SELECTION MADE SIMPLE

PRE-ENGINEERED PUMP PACKAGES

Single pump stands, dual backup and multiple injection systems



MASTER POWER RELAY
JUN 107 107

ProMinent

PRE-ENGINEERED SYSTEMS

CUSTOM NEEDS WITH A STANDARD APPROACH

Process Measurement & Control



Standard or custom systems are mountable on a backplate or in a NEMA 4X cabinet.

Fluoride Monitoring System



SPECIAL SYSTEMS

Ultramat dry polymer makedown system



Liquid Polymer Makedown System



ProMinent®



ProMinent Fluid Controls, Inc.
Pittsburgh, PA (USA)



ProMinent Dosiertechnik GmbH
Heidelberg, Germany



ProMinent Fluid Controls Ltd.
Guelph, Ontario (Canada)



Service and Support

ProMinent's commitment to provide our customers with the highest degree of product performance, service and technical support is sure to exceed your expectations.

Visit our websites for more information about ProMinent, our extensive product lines and capabilities:

www.prominent.cc (U.S.)
www.prominent.ca (Canada)
www.prominent.de
 (Worldwide Group of Companies)

Or contact us direct:

e-mail: sales@prominent.cc
sales@prominent.ca

PT SYS 003 02/01 NA #7750035

USA
 ProMinent Fluid Controls, Inc.
 136 Industry Drive
 Pittsburgh, PA 15275
 Tel: (412) 787-2484
 Fax: (412) 787-0704

Canada
 ProMinent Fluid Controls Ltd.
 490 Southgate Drive
 Guelph, Ontario N1G 4P5
 Tel: (519) 836-5692
 Fax: (519) 836-5226