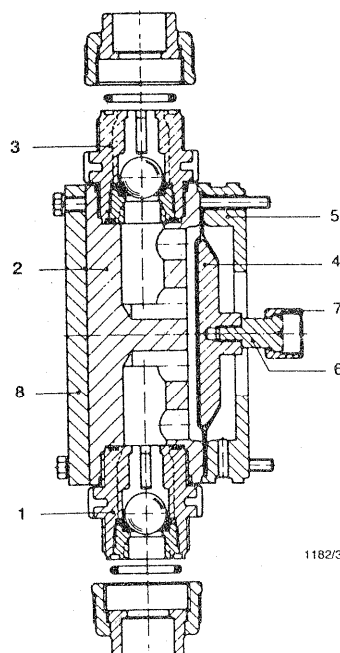


# ProMinent How To's:

**Date:** June 14, 2004  
**Subject:** Diaphragm Replacement - Meta  
**Product:** Motor Driven pumps  
**Category:**  
**Page :** 1 of 2

## Diaphragm Replacement:

1. While the pump is running, set the stroke length to approximately 0%.
2. Remove the power to the pump.
3. Thread the coupling bolt (6), with the coupling nut (7), onto the back of the diaphragm(4). (Note this is a Left hand thread.)
4. Place the diaphragm (4) against the backplate (5), thread the coupling nut (7) onto the slotted coupling nut which is already threaded onto the Slide rod, of the drive unit. Do not fully tighten the coupling nut, leave it loose to allow the diaphragm to spin.
5. Line up the drain hole, located in the side of the backplate, to the bottom.
6. Place the Bolts through the reinforcement plate (8), dosing head (2), diaphragm (4), and backplate (5), and screw them in lightly by hand.
7. Ensure that the direction of flow is correct. (Suction valve (1) is at the bottom and the discharge valve (3) is at the top.)
8. Using a 24 mm wrench tighten the diaphragm coupling nut (7).
9. Turn the pump on.
10. Turn the stroke to 100%
11. Tighten the bolts evenly in the same diagonal pattern as not to pinch the diaphragm.
12. The pump is ready for operation.



1182/3