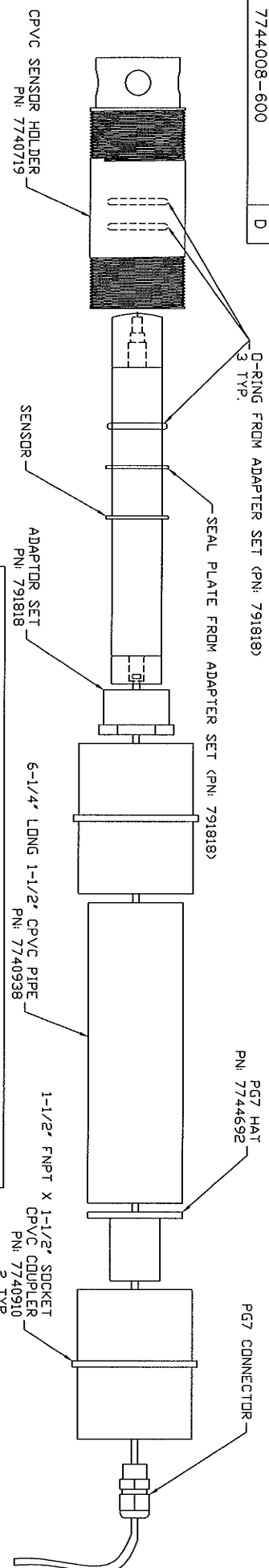


CHLORINE

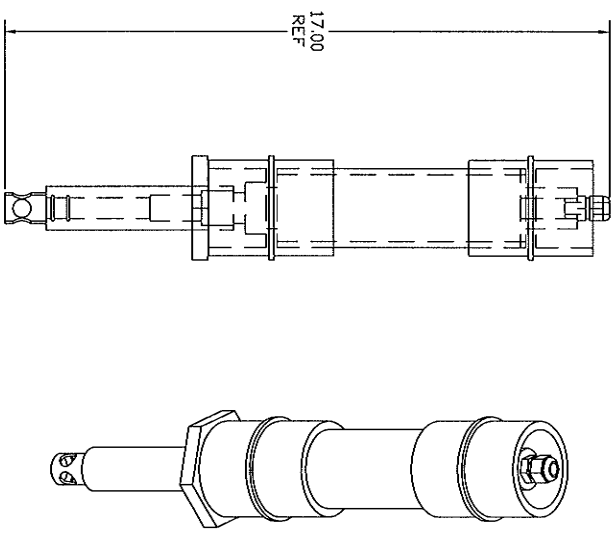
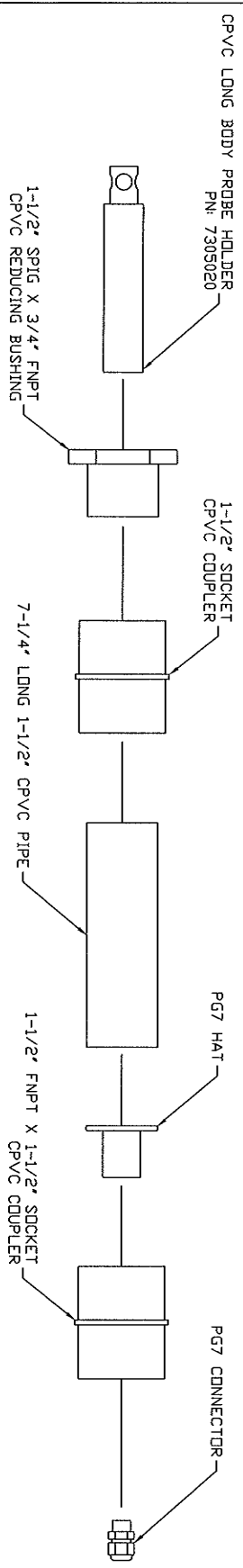



INSTRUCTIONS:
1. DETACH THE UPPER AND LOWER SECTIONS OF THE SENSOR HOLDER BY CUTTING THE ZIP TIES.

2. CAREFULLY REMOVE THE CHLORINE SENSOR FROM THE BOX.
 - A. REMOVE PG CONNECTOR FROM THE TOP COVER OF THE SENSOR HOUSING.
 - B. REMOVE CAP FROM TOP OF SENSOR HOUSING.
 - C. DESOLDER THE 2-CONDUCTOR TERMINAL STRIP FROM THE SENSOR PRINTED CIRCUIT BOARD.
 - D. SOLDER THE 30' LENGTH OF #20 AWG BELDEN 8762 (PFC P/N 7744707) CABLE INTO THE POSITIONS WHERE THE TERMINAL STRIP WAS LOCATED. CONNECT THE WHITE CONDUCTOR TO PIN 1, AND THE BLACK CONDUCTOR TO PIN 2.
 - E. USING SCOTCHWELD DP-270 EPOXY PUTTING COMPOUND, COMPLETELY FILL THE SENSOR'S TERMINAL CAVITY TO THE THREADS WHERE THE CAP MEETS.
 - F. INSTALL THE CAP AND CONTINUE COMPLETELY FILLING THE TERMINAL HOUSING THROUGH THE HOLE WHERE THE PG CONNECTOR INSTALLS AT THE TOP OF THE CAP.
 - G. AFTER FILLING THE TERMINAL HOUSING WITH EPOXY, INSTALL THE PG CONNECTOR, GLAND, AND COMPRESSION NUT TO COMPLETE THE SENSOR ASSEMBLY.
 - H. LET THE SENSOR ASSEMBLY 'SET-UP' FOR A 24 HOUR PERIOD TO ALLOW THE EPOXY TO CURE.
 3. REMOVE THE MEMBRANE CAP FROM THE SENSOR AND FILL WITH ELECTROLYTE FOLLOWING THE DIRECTIONS ON THE BOTTLE.
 4. INSERT THE SENSOR INTO THE THREADED END OF THE LOWER SENSOR HOUSING AND TIGHTEN THE THREADED MOUNTING SET ON THE SENSOR.
 5. WRAP THE THREADS OF THE LOWER SENSOR HOUSING WITH TEFLON TAPE AND APPLY A SMALL AMOUNT OF PIPE DOPE OVER THE TEFLON TAPE.
 6. THREAD THE TWO (2) SENSOR HOUSING HALVES TOGETHER, AND GENTLY PULL THE EXCESS CABLE THROUGH THE UPPER SENSOR HOUSING STRAIN RELIEF (PG CONNECTOR).
 7. TIGHTEN THE STRAIN RELIEF NUT AT THE TOP OF THE SENSOR HOUSING TO SECURE THE CABLE.
- *DISASSEMBLY NOTE: LOOSEN THE PG7 CONNECTOR NUT PRIOR TO DISASSEMBLY TO PERMIT CABLE ROTATION WITHIN HOUSING.

D 05-13-03		ADDED POTTING INSTRUCTIONS		DH	
C 06-03-02		ADDED DISASSEMBLY TEXT		DH	
B 02-05-02		CHANGED WIRE SEAL		CLW	
REV	DATE	DESCRIPTION	BY	APPROVED	
CUSTOMER					
PROMINENT FLUID CONTROLS, INC.					
PURCHASE ORDER No					
TITLE					
1-1/2" SUBMERSIBLE SENSOR HOLDER ASSEMBLY DRAWING					
ENGINEER SEAL					
PFC Prominent®					
PITTSBURGH, PA USA WWW.PFC-AWES.COM					
PROMINENT FLUID CONTROLS LTD. PROMINENT FLUID CONTROLS, INC.					
135 MONROE DRIVE PITTSBURGH, PA 15275 USA					
TEL 412 339 3442 FAX 412 339 3444					
DESIGNED BY PFC					
DRAWN BY DH					
CHECKED BY DH					
DATE 03-14-00					
SIZE B					
REV D					

PH



JOB No		PURCHASE ORDER No		
TITLE LONG BODY SUBMERSIBLE PROBE HOLDER ASSEMBLY DRAWING				
ENGINEER'S SEAL				
		THE PROMINENT GROUP OF COMPANIES		
PITTSBURGH, PA USA		WWW.PFC-AMER.COM		
PROMINENT FLUID CONTROLS LTD. PROMINENT FLUID CONTROLS, INC. 135 INDUSTRIAL DRIVE PITTSBURGH, PA 15275 USA TEL 412 797 2466 FAX 412 797 0794				
DESIGNED BY DATE APPROVED BY DATE				
CHECKED BY DATE				
PFC				
CUSTOMER				
REVISIONS				
REV	DATE	DESCRIPTION	BY	APPROVED
0	02-07-01	FIRST ISSUE	CLW	